

The background image shows a group of people in an exhibition space. Three men are standing and looking at architectural posters. One man on the left is looking at a poster titled 'A LEARNING ECO-SYSTEM'. Another man in the center is looking at a poster titled 'OPEN CAMPUS'. A third man on the right is looking down at a book or portfolio. In the foreground, a woman is sitting at a table, looking at a large architectural drawing. The table has various items on it, including a glass, a cup, and some papers. The overall color scheme is a monochromatic purple/pink tint.

JURY REPORT **NEW AARCH**

INTERNATIONAL OPEN DESIGN COMPETITION FOR
THE NEW AARHUS SCHOOL OF ARCHITECTURE



AARHUS SCHOOL OF ARCHITECTURE



DANISH BUILDING
AND PROPERTY AGENCY

NEW **AARCH**

NEW AARHUS SCHOOL OF ARCHITECTURE

Page 4—6

PREFACE

Page 7—11

OVERVIEW

Page 12—15

COMPETITION FACTS

Page 16—24

GENERAL REMARKS

Page 25—61

WINNERS & PURCHASES

Page 62—66

OUTRO

PREFACE

PREFACE

Aarhus School of Architecture was established in 1965 in existing buildings at 20 Nørreport, in Aarhus. The location was intended only to be temporary and it was expected that, in time, a new school would be built. More than 50 years later, the school's main address is still 20 Nørreport, and, over the years, its activities have extended into the neighbourhood, with the result that the school is located at nine different addresses today. Over the years several attempts at realising the project of building a new school were made. None were, however, successful. But in mid-December 2016 it finally happened - the open international design competition NEW AARCH was launched as a collaboration between The Danish Building & Property Agency and Aarhus School of Architecture - with support from Realdania.

Denmark's first new built school of architecture will be located on the former railway goods area in the heart of Aarhus in connection with a converted goods station: since 2012 a centre for art and cultural production called Godsbanen. The area was, for many years, considered to be a closed and less attractive part of the city. But in the future it will, based on Aarhus Municipality's plans for the area, develop into a centrally located, connecting and significant area of Aarhus. The vision of a culture-bearing urban district with a mix of housing, cultural institutions and cultural activities makes the area an obvious choice for locating a new school of architecture and provides a unique opportunity to influence the way the area is going to develop.

The purpose of the open design competition has been to obtain proposals for how the framework of a robust building within a limited budget might provide the foundation for an interesting and innovative environment for training the architects and architectural thinkers of tomorrow: a place where the school can bring together its activities in one location and where traditional functional contexts have been rethought. A place

where art, practice and science can go hand in hand; where the work of students and researchers is highly visible; and where high-technology and craftsmanship are given equal opportunities to develop and may inspire each other. A place for which the framework has been established, without restricting the way it is filled.

Other aims of the competition were to find the best possible location for the school at Godsbanenarealerne, to find out how neighbouring and surrounding buildings could be programmed, and how a school of architecture that is open to the outside world might be created.

THE TASK IS, FIRST AND FOREMOST, TO
CREATE A PLACE FOR ARCHITECTURAL THINK-
ING AND ARCHITECTURAL EXPERIMENTS. A
LABORATORY TO WHICH WE CAN INVITE THE
CITY AND THE WORLD AND WHERE WE CAN
WORK TOGETHER TO PROVIDE VISUAL AND
PHYSICAL INSPIRATION FOR THE ARCHITEC-
TURE OF TOMORROW.

There has been an overwhelming interest in the competition; and the jury would like to thank the many entrants and acknowledge the great efforts the many entries represent. 235 entries from 47 nations were submitted, of which 230 were accepted for assessment.

We have examined very different entries - including good, diverse and unexpected proposals. It is generally the jury's impression that the task has been difficult - as it ranges widely in scale and asks fundamental questions about urban contexts, on the one hand, and on the other, about programmatic and functional rethinking. Furthermore it is based on relatively 'loose' architectural

programming. Not least for this reason, the many proposals are of great value to us, as they allow us to see the complexity of the task from new angles and ask ourselves new questions in the process of defining the framework of the school and developing Godsbanearealerne.

THE DESIGN OF THE SCHOOL MUST ALLOW SPACE FOR BUILDING AND PRODUCTION OF PROTOTYPES. IT MUST BE ABLE TO OPERATE 24 HOURS A DAY, AND STUDENTS MUST TAKE CENTRE STAGE. WE WANT LARGE HIGH-CEILINGED SPACES – A BUILDING THAT CAN LIVE UP TO THE SCHOOL'S VISION 'ENGAGING THROUGH ARCHITECTURE'. THIS DEMANDS A RAW AND ROBUST STRUCTURE THAT IS ABLE TO ACCOMMODATE CHANGE.

The 230 entries we received helped the jury clarify the questions raised in the brief and have engaged the jury in many exciting discussions about function, architecture and urban spaces, as well as about what a school of architecture actually is. The field of winners remained open for a long time and only in the final stage of the assessment it became clear who the winners would be. In full and complete agreement, the jury was able to identify three winners: entries #101/37641897, #156/64130476 and #220/92070479, on the grounds that these proposals were able to solve the task at a highly professional level.

It was decided to purchase twelve entries that provide intelligent solutions to some specific matters but in other directions do not meet the wishes and requirements of the brief. The jury has prioritised buying as many entries as possible for the total prize money, as the proposals along with the three winning entries present a wide range of possible solutions which will serve as a basis and provide inspiration for the subsequent process of defining with greater precision the framework and content of the new school.

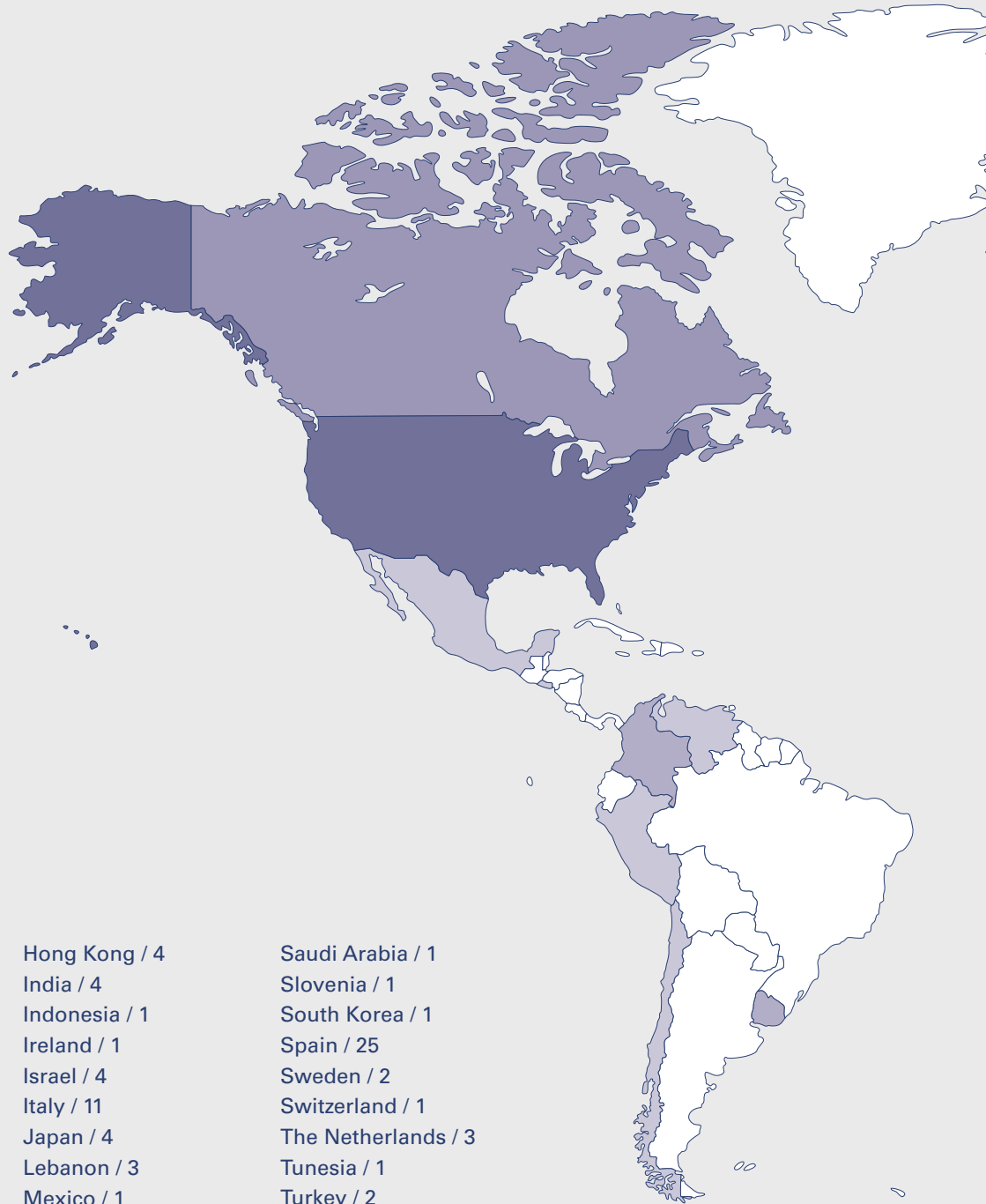
The following is a review of the jury's general remarks on the competition, followed by a review of the three winning entries and the purchased entries - all of which supported by the entrants' illustrations.

Signed by the jury on 18 March 2016 in Copenhagen.

A man and a woman are shown in a meeting, looking at architectural plans. The man is on the left, wearing a dark suit, with his hand to his chin in a thoughtful pose. The woman is on the right, wearing a dark top, pointing her index finger upwards. The background is filled with architectural drawings and models, including a large model of a building complex. The entire image has a strong magenta/pink color overlay.

OVERVIEW

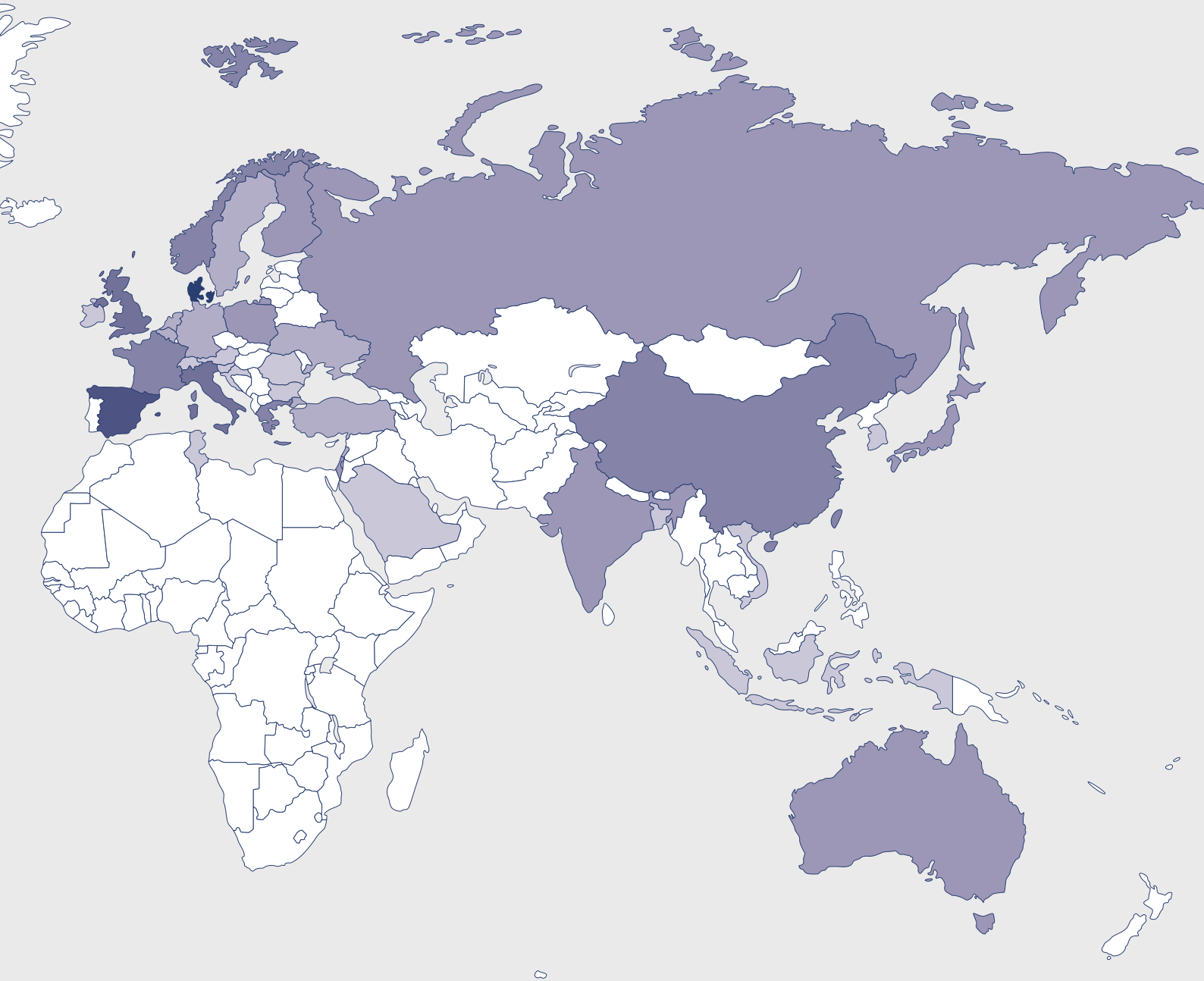
WORLD MAP



Australia / 4
Austria / 1
Bangladesh / 1
Belgium / 3
Bulgaria / 1
Canada / 4
Chile / 1
China / 8
Columbia / 2
Croatia / 1
Denmark / 50
El Salvador / 1
Finland / 5
France / 7
Germany / 2
Greece / 6

Hong Kong / 4
India / 4
Indonesia / 1
Ireland / 1
Israel / 4
Italy / 11
Japan / 4
Lebanon / 3
Mexico / 1
Norway / 9
Palestine / 2
Peru / 1
Poland / 4
Portugal / 6
Romania / 1
Russia / 4

Saudi Arabia / 1
Slovenia / 1
South Korea / 1
Spain / 25
Sweden / 2
Switzerland / 1
The Netherlands / 3
Tunisia / 1
Turkey / 2
Ukraine / 2
United Kingdom / 15
Uruguay / 2
USA / 15
Venezuela / 1
Vietnam / 1



THREE EQUAL FIRST PRIZES

DKK 200,000 EACH

PURCHASES

DKK 25,000 EACH



#101/37641897

ERIK GIUDICE ARCHITECTS



#156/64130476

VARGO, NIELSEN & PALLE



#220/92070479

ATELIER LORENTZEN LANGKILDE



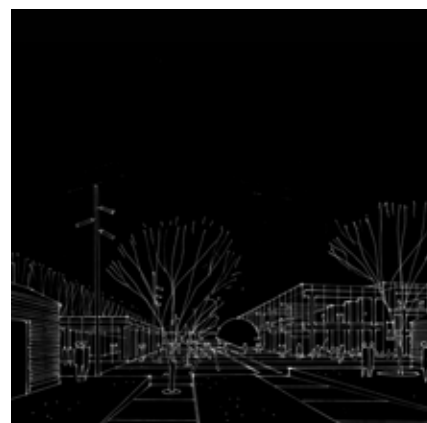
#011/03641494

ADEPT



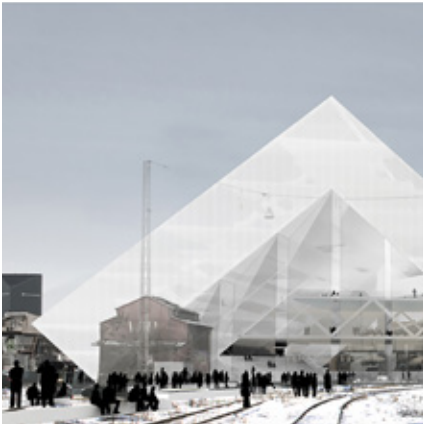
#014/04344322

BOGLE ARCHITECTS

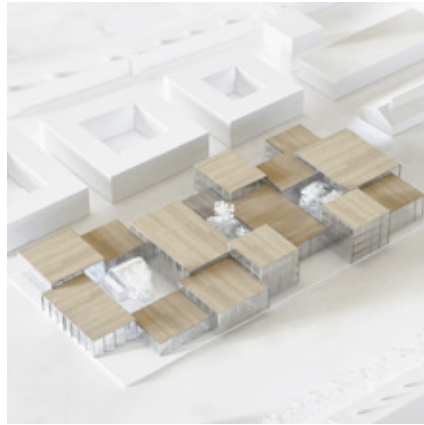


#037/12282623

JWH + VESTHARDT ARKITEKTER



#051/19127100
OP



#060/22740814
EFFEKT + K. LINDHART WEISS



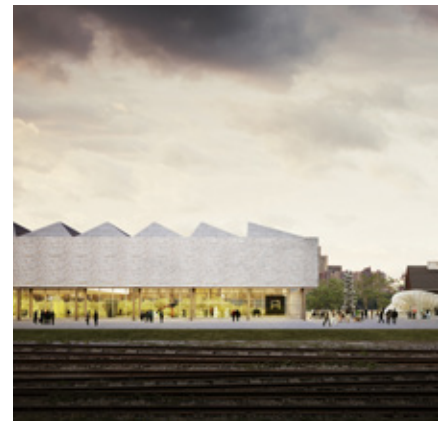
#067/24707263
PABLO PITA ARCHITECTS



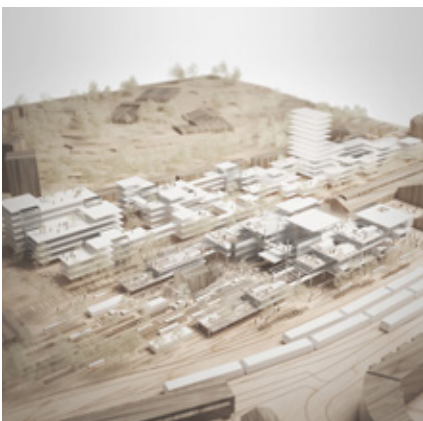
#129/50293570
PADILLA NICAS ARQUITECTOS



#153/62661105
ATELIER CMJN



#159/65481966
TALLER 301



#187/75651600
AART ARCHITECTS



#189/75792043
MATTERS



#229/96685212
JAJA ARCHITECTS

A photograph of two men in a meeting, overlaid with a semi-transparent pink filter. The man on the left is wearing glasses and a patterned tie, looking down. The man on the right has a beard and glasses, resting his chin on his hand and looking towards the left. The background shows a wall with various documents and charts.

COMPETITION FACTS

COMPETITION FACTS

COMPETITION INITIATOR AND COMPETITION FORM

The initiator of this competition is The Danish Building & Property Agency who in cooperation with Aarhus School of Architecture has launched the competition as an open design competition in accordance with EU Directive no. 2004/18/EC (The Public Procurement Directive). The competition was announced in Prior Information Notice 2015/S 172-313735, on 1 September 2015.

The open design competition is funded by Aarhus School of Architecture and Realdania and implemented with assistance from the Danish Architects' Association. Aarhus Municipality has made the competition area available and contributed with information about the known plans for Godsbanearealerne.

THE COMPETITION BRIEF WAS PREPARED BY

The Danish Building & Property Agency and Aarhus School of Architecture.

THE ASSIGNMENT

After 50 years at its current location, new school buildings are to be built for Aarhus School of Architecture. As a starting point, the school should have an area of 13,000 m², but should also be sufficiently robust to allow future adjustments in size and scale. The total budget of the building project is DKK 250 million, excluding VAT, to cover construction costs, consultancy services, land purchase, etc.

The school is to be located in the new urban development area Godsbanearealerne, in the heart of Aarhus. For the open design completion Aarhus Municipality has made a competition area available, that is somewhat larger than the area. The Danish Building & Property Agency will eventually purchase for the school.

Besides proposing a design statement and providing instructions for rethinking the physical

setting of a school of architecture, another part of the task was to locate the school in the area and make suggestions for programming future neighbouring buildings. All of this in the hope of creating a well-considered master plan for the area in cooperation with Aarhus Municipality.

COMPETITION PERIOD

15 December 2015 – 1 February 2016

ENTRIES

Total Number of submitted entries: 235
Entries accepted for assessment: 230
Danish/international entries: 50/180

JURY

The Danish Building & Property Agency: **Kristian Lyk-Jensen**, Vice Director (Chairman of the jury) and **Signe Primdal Kæregaard**, appointed temporarily as Project Director.

Aarhus School of Architecture: **Ingelise Bogason**, Chairman of the Board and **Torben Nielsen**, Rector.

Realdania: **Lars Autrup**, Project Director.

DESIGN PROFESSIONALS APPOINTED BY THE DANISH ARCHITECTS' ASSOCIATION

Jens Thomas Arnfred, Architect MAA, and **Reiulf Ramstad**, Architect MNAL (Norway).

ADVISERS TO THE JURY

Aarhus Municipality: **Erik Jespersen**, Director of Technical and Environmental Services and **Stephen Willacy**, City Architect.

The Danish Building & Property Agency: **Lisa Sørensen**, project manager (secretary to the jury), **Rikke Wedege Sørensen**, associate project manager, **Dorte Demant Westphall**, lawyer, and **Mikkel Borre**, lawyer.

Aarhus School of Architecture: **Jørgen Hede-gaard-Jensen**, director of administration (not present), **Walter Unterrainer**, professor, **Kim Christiansen**, tenants advisor, and **Lone Biehl**, tenants advisor (not present).

SECRETARY TO THE JURY AND PROJECT COORDINATOR

Lisa Sørensen, project manager, The Danish Building & Property Agency

COMPETITION SECRETARY

Bent Kolind, architect MAA, Danish Architects' Association

ASSESSMENT PERIOD

22 February - 9 March 2016

ASSESSMENT CRITERIA

The entries were assessed based on the assessment criteria IDEA, ARCHITECTURE, FUNCTION (weighted 65%) and RELATIONSHIP TO THE SITE (weighted 35%). More detailed information on this on page 61 of the competition brief.

ASSESSMENT PROCEDURE

All entries were assigned a serial number which supplemented the unique submission code to make the assessment process easier by using simple references. In the present jury report the entries are referred to using both the serial number and the submission code, as follows: #nnn/xxxxxxx. E.g. #001/12345678.

During the assessment process, the jury held a total of four meetings. During initial, preliminary meetings, all 230 entries were reviewed by the design professionals. The design professionals subsequently agreed to present to the other jurors the following 61 entries:

#001/00801072; #004/02175765; #008/02835578;
#010/03353539; #011/03641494; #013/03956307;
#014/04344322; #018/05405693; #023/07799036;
#024/07824336; #026/08401554; #027/08698445;
#028/09045791; #032/10157333; #035/11676579;
#037/12282623; #038/12812859; #045/15554652;
#047/16354901; #051/19127100; #056/21124374;
#057/21135229; #058/21147837; #059/21299093;
#060/22740814; #062/23294307; #064/24096793;
#067/24707263; #073/28727413; #076/29248267;
#094/35069416; #095/35890638; #098/36821108;

#099/36977494; #101/37641897; #105/39257234;
#109/40561383; #121/45434450; #129/50293570;
#136/53774797; #153/62661105; #156/64130476;
#159/65481966; #164/67237029; #165/67321550;
#170/68414091; #175/70366036; #178/72328279;
#187/75651600; #188/75757760; #189/75792043;
#195/79791362; #197/81278217; #206/84645792;
#210/87428972; #218/90809830; #219/91280800;
#220/92070479; #225/94171945; #229/96685212
and #230/96956875.

At the first meeting the design professionals presented the chosen entries. The jury then decided that the following 28 entries were to proceed to the second meeting:

#011/03641494; #013/03956307; #014/04344322;
#028/09045791; #037/12282623; #051/19127100;
#056/21124374; #059/21299093; #060/22740814;
#062/23294307; #067/24707263; #073/28727413;
#076/29248267; #094/35069416; #099/36977494;
#101/37641897; #109/40561383; #129/50293570;
#153/62661105; #156/64130476; #159/65481966;
#164/67237029; #187/75651600; #188/75757760;
#189/75792043; #219/91280800; #229/96685212
and #230/96956875.

At the second meeting, the 28 entries from the first meeting were discussed. The meeting was concluded by choosing the following 6 entries for the third meeting:

#014/04344322; #101/37641897; #153/62661105;
#156/64130476; #159/65481966; #189/75792043

At the third meeting, the 6 entries were examined and entry #220/92070479 was furthermore once again included in the assessment process. It was then decided which entries were to be designated as winners, which entries were to be purchased, and how the prize money would be distributed.

At the fourth meeting, the jury's report was signed and the name envelopes opened.

THE RESULT

Three equal winners:

Entry #101/37641897: DKK 200,000

Entry #156/64130476: DKK 200,000

Entry #220/92070479: DKK 200,000

TOTAL PRIZE MONEY

DKK 900,000

ANNOUNCEMENT OF THE COMPETITION RESULT

4 April 2016

Purchases:

Entry #011/03641494: DKK 25,000

Entry #014/04344322: DKK 25,000

Entry #037/12282623: DKK 25,000

Entry #051/19127100: DKK 25,000

Entry #060/22740814: DKK 25,000

Entry #067/24707263: DKK 25,000

Entry #129/50293570: DKK 25,000

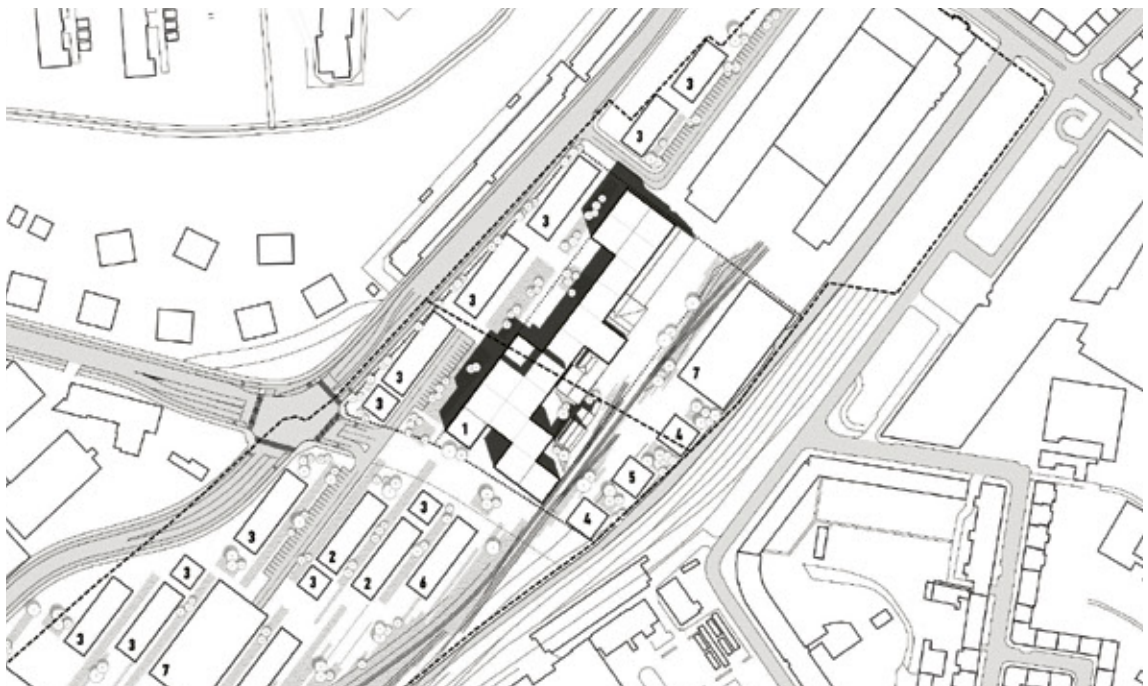
Entry #153/62661105: DKK 25,000

Entry #159/65481966: DKK 25,000

Entry #187/75651600: DKK 25,000

Entry #189/75792043: DKK 25,000

Entry #229/96685212: DKK 25,000



Entry #038/12812859 made by Aleksandar Shinolov, Site plan 1:4000



GENERAL REMARKS

GENERAL REMARKS

The open design competition NEW AARCH is no ordinary competition, no ordinary place and no ordinary task. On the one hand, the aim of the competition is to invite the authors of the three best entries to participate in the next and crucial round. On the other hand, the aim of the type of competition that was chosen is to shed light on several possible solutions models for the school of architecture's location, layout and nature.

In the assessment of the 230 entries we have tried to answer the questions formulated in the brief under the headings: IDEA, ARCHITECTURE, FUNCTION and RELATIONSHIP TO THE SITE.

The entries have not only been assessed on the basis of their ability to provide answers to the individual parameters of the task, but also based on the quality of the overall solution. During the assessment process, the many open questions in the brief combined with the solutions have resulted in important discussions on the following subjects:

- The location of the building or building complex at the site
- The ability of the proposal to exploit the site's urban and landscape potential
- The ability to create a basis for further development of Godsbanearealerne
- The ability of the proposals to manage a future flexible architectural programme
- The ability of the proposal to identify possible alternatives to the traditional educational/learning environment in recognition of the fact that, in terms of organisation, Aarhus School of Architecture resembles an artistic institution, with studios, workshops and advanced robotic technology, more than a traditional university environment with lecture halls and classrooms

Seen as a whole, the many entries we received shed light on the task's complex dilemmas in an

exemplary manner, but also show how difficult it is to summarize entirely convincing design statements. Virtually all of the entrants found it a challenge to maintain a low level of detail while focusing on concept, future programming ideas and rethinking functional contexts. It is evident that the entrants have juggled scales, volumes, axes, and functional strategies, but it is also apparent that it has not been easy to find a superior contextual statement in a rather open game with many unknowns.

The entries we have received have chosen very different emphases. Some have used all their efforts on the school itself, neglecting the development and landscape contexts. Others have optimised and fine-tuned the green wedge and the wide, level landscape features, while trying to fit in a school of architecture wherever 'any room was left'. Only few entries have managed to put all the pieces on the board and let them float freely until the game found its own level and a characteristic and beautifully proportioned building project emerged from the board to catch the attention of the jury.

THE LOCATION ON GODSBANEAREALERNE

We have Danish State Railways to thank for Godsbanearealerne being the area it is: a welcome, green 'lung' – characterised by low-rise buildings – in the heart of the city. The competition initiator has taken the liberty of turning the unresolved planning issues at Godsbanearealerne into an advantage: we hope and expect the new school of architecture, in all of its appearance, will set the agenda for developing the area further. It has, consequently, been extremely important to the jury to identify proposals that bring into play 'the contextual gaming pieces' in a convincing manner.

But how should the school be located? What is to be the school's function in the urban spaces involved? How should it be located in relation

THE OUTDOOR AREAS CONSTITUTE A VALUABLE POTENTIAL. GATES AND WALLS MUST PROVIDE A FREE FLOW BETWEEN PROJECTS INDOORS AND OUTDOORS. THE LIFE OF THE SCHOOL SHOULD BE NURTURED BY GREEN SPACES

to the landscape features of Ådalén, to the railway track areas, pedestrian streets, to new and old buildings? What is the cultural axis? And how should the new school of architecture leave its mark on the cityscape? The questions are many, but there are even more answers.

THE GREEN WEDGE

One of the few requirements of the brief was that the green wedge had to be maintained as an unbroken landscape, connecting Ådalén with the city, all the way to Godsbanen. Basically, the entries present two approaches to the green wedge. An approach in which the building/building complex is located 'on the side' (east or west) of the green wedge and one in which it is located within the green wedge, either 'sealing off' the wedge or letting it run under/over/through the building/building complex as in, for instance, entries #038/12812859 (p. 15) and #178/72328279 (p.19).

Regardless of the strategy chosen for situating the building, the Jury's assessment has emphasised a deliberate and articulate architectural relationship between the school and landscape which would allow the school's workshop facilities to move outdoors, when the season permits it, as in entry #188/75757760 (p.19).

THE RELATION TO GODSBANEN

The connection to Godsbanen and the square in front of the centre's entrance is another aspect the jury chose to emphasise. Also in this respect the solutions fall in two different categories in terms of location, which more or less establish the project's interaction with Godsbanen.

In general, the jury was looking for solutions that celebrate the site's special potentials as a distinctive urban space that enhances the way Godsbanen is experienced as the terminus of the green wedge, as seen in entry #010/03353539 (p. 24).

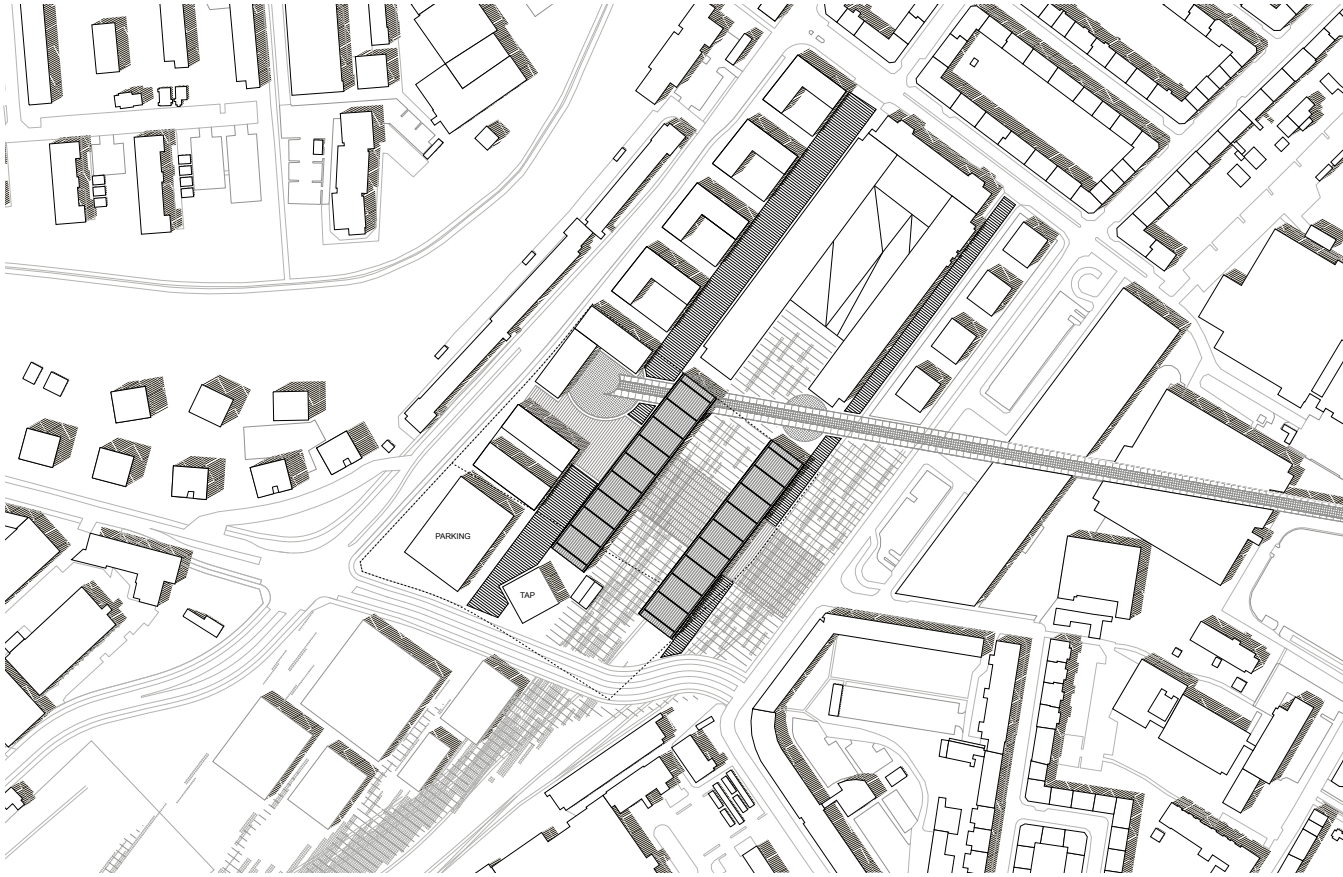
THE EAST-WEST AXIS

Finally, it was an important element of the assessment to assess the entries' ability to maintain and strengthen the east-west connection: an axis which will in the future become a major artery for connecting the city and creating flow in the area. Many entrants have seen this opportunity, but only few emphasise and support it as clearly as entries #014/04344322 (p. 40), #051/19127100 (p. 44) and #101/37641897 (p. 26).

A CAMPUS OR A SINGLE BUILDING

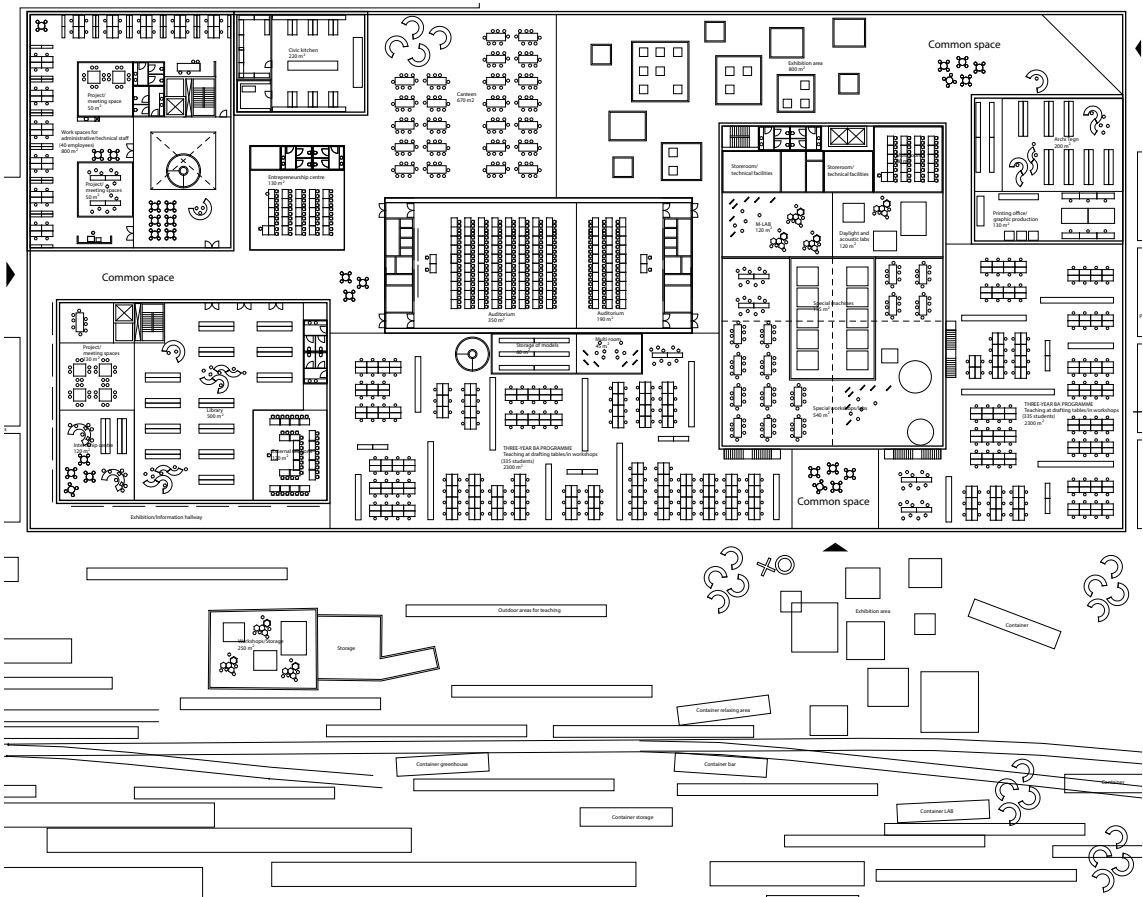
On the subject of Aarhus School of Architecture's location at Godsbanen, the jury discussed whether a scattered or a compact building complex would be most advantageous and whether a single building or a campus concept would be most suitable. Several solutions work with the school of architecture as relatively small, fragmented volumes in an attempt to fit the project into the scale determined by the site. An example of this can be seen in entry #073/28727413 (p. 24).

With reference to the many scattered leases that characterize the school today, the jury has preferred proposals that bring together the school's teaching and organisational activities in one building. For this reason, it is only very few of the awarded entries that propose a school which is not under one roof (#011/03641494 (p. 38) and, approximately, #060/22740814 (p. 46)).



Entry #178/72328279 made by Bjørn Alstrup Oddgaard, Site plan 1:4000

Entry #188/75757760 made by Kristian Brandsen, Plan 1:1000





Entry #109/40561383
Made by MONGE + SALCEDO ARCHITECTS



Entry #008/02835578
Made by WILLIAM MATTHEWS ASSOCIATES



Entry #035/11676579
Made by Boyarsky Murphy Architects



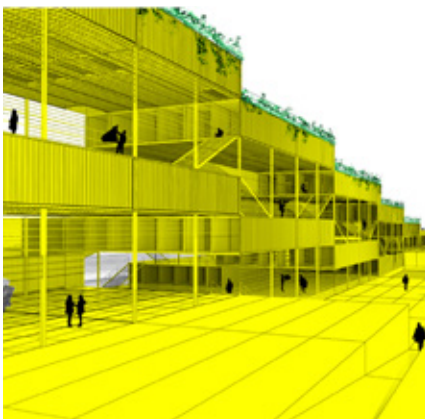
Entry #098/36821108
Made by Petrās Architecture



Entry #219/91280800
Made by Fadil Foondun, Junkwang Kim
& Camille Mesnard



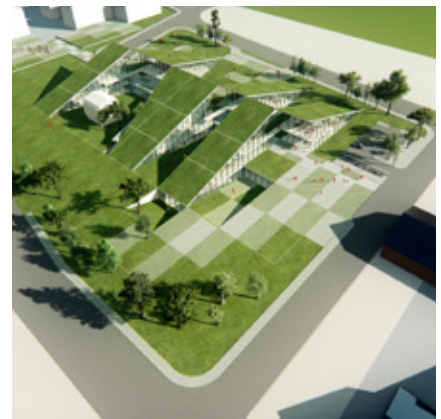
Entry #095/35890638
Made by NOBEL arkitekter



Entry #028/09045791
Made by LOT-EK.



Entry #210/87428972
Made by NIKKEN SEKKEI



Entry #195/79791362
Made by Md. Monir Hasan

Despite the desire for placing all activities under one roof, there is, however, also a need to vary the characters and natures of spaces so they invite different uses and provide a sense of belonging - values that characterise the existing school with its scattered location and which the school would like to incorporate in the new school. An entry which presents a very fine solution to this is #229/96685212 (p. 60).

The school's need and desire to be open to the outside world and invite in the city and its citizens has characterized many solutions. In the course of the assessment process the jury has been strengthened in its belief in one single building that is, nevertheless, without appearing introverted, open to the outside world. However, not all activities at a school of architecture are suited to being 'exhibited', and as always it is necessary to strike a fine balance between the complex's potential to provide peace to work and openness. For this reason several proposals suggest a building within the building and point out the fact that the school's workshop and exhibition spaces belong in the category of urban and audience-oriented activities. However, the high-ceilinged factory model requires interventions that can support the need of the learning environment for concentration; and in several solutions this model is accompanied by furniture and equipment solutions that ensure the necessary intimacy and clarity of layout. The jury is, however, not convinced that any entries meet this intention to a sufficient extent.

BUILDING TYPOLOGICAL VARIATIONS

It is not surprising that the solutions present a wide range of building typological variations. We might mention the following – as headlines: The square complex: like entry #109/40561383 (p. 20) – The elongated complex: like entry #008/02835578 (p. 20) – The bridge: like entry #035/11676579 (p. 20) – The circular: like entry #098/36821108 (p. 20) – The composite: like entry #073/28727413 (p. 24) – The campus: like entry #121/45434450 (p. 23) – The hangar: like entry #188/75757760 (p. 19) – The wing/barn: like entry #219/91280800 (p. 20) – The monumental and

iconic: like entry: #051/19127100 (p. 44) – The village: like entry #095/35890638 (p. 20) – The stacked: like entry #028/09045791 (p. 20) – The cloud: like entry #210/87428972 (p. 20) – The topographic: like entry #195/79791362 (p. 20) and, naturally, a great many intermediate forms.

Many solutions reveal a thorough knowledge of teaching activities at the present school and have made good efforts to summarise a building project that is able to meet the desire of the brief for creating a framework for free so-called dynamic teaching courses in high-ceilinged, multifunctional workshop-like spaces. Some examples of this; a three-storey room with a ceiling crane for construction work (#101/37641897 (p. 26)), tool towers and workshop pavilions in the open (#156/64130476 (p. 30)), internal function-specific buildings around which less programmed functions unfold (#153/62661105 (p. 52)), studio terraces (#220/92070479 (p. 34)) and visible workshop facilities as overall expression (#156/64130476 (p. 30) and #159/65481966 (p. 54)).

PROGRAMMING AND CONTENT

Quite deliberately, the brief for this ideas competition was formulated very openly.

The entries include many competent solutions, but the jury also finds that it has been difficult for many of the authors to challenge routine thinking and relate freely, conceptually and radically to the issue of re-programming the function of a school of architecture and accept that the competition was an ideas competition in which all aspects of the solution need not necessarily 'add up'. In this respect we have not quite achieved our objective in the open design competition, and we will therefore work more on this in the next phase.

SCALABILITY

Aarhus School of Architecture's functional and spatial needs are still being planned; and we need to find solutions that do not restrict the ongoing adjustments that are constantly made to optimise the school's needs. We very much need a school that can be scaled up as well as down.

General usability and robustness have consequently been key words in our assessment. For the same reason, the jury has been particularly attracted to solutions that not only demonstrate the ability to prioritize and organize, but which also show the ability to 'cut to the bone' using simple strategic interventions and provide spaces for the school's many-faceted uses that are open to interpretation. In a way, it's all about concentrating on the essentials and pointing out the most necessary uses. The jury has consequently deemed less attractive solutions which, in order to accommodate form, took liberties that tied freedom to form and not vice versa.

WE NEED PROPOSALS FOR A VERY ROBUST DESIGN FOR A NEW SCHOOL OF ARCHITECTURE. WE ENVISION A BUILDING IN WHICH WE CAN INTEGRATE NEW SPATIAL FEATURES

The open design competition has made the jury aware of how focusing on using the area efficiently and on scalability will be imperative in the next stage. In terms of both uses and square meters.

ECONOMIC FRAMEWORK AND FEASIBILITY

Most entrants have seen the task as an exercise in using the areas as efficiently as possible and providing the greatest number of usable square and cubic metres using a minimum of resources. To their credit, many of the solutions have cherished the nature of architecture as something precious and have made significant efforts to reconcile the requirements of the brief with the modest construction budget. Only a few entries have submitted economic calculations along with their solutions, but quite a number have endeavoured to find simple structural principles and clarified building volumes that bear testimony to an understanding of the reasons on which the building project is based.

Other entrants have had a special focus on operating costs, proposing huge, translucent double building envelopes in an attempt to introduce seasonally-determined climate zones that point to the fact that not all activities in a workshop-oriented school of architecture require the same temperatures. This is the case in entries #153/62661105 (p. 52) and #101/37641897 (p. 26).

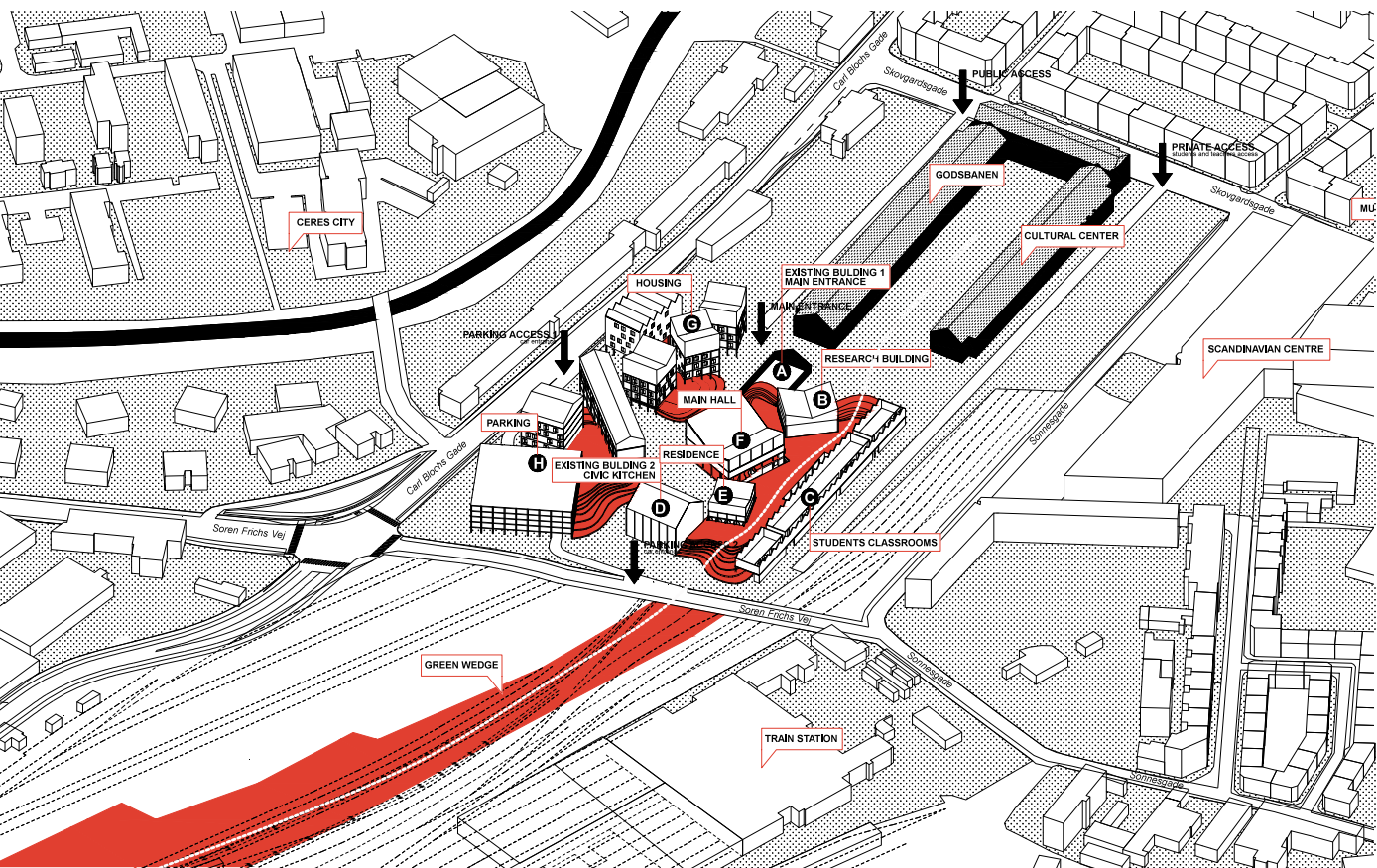
The assessment of the feasibility of proposals has been supported by the fact that the winning entries are not going to be built tomorrow. For the same reason, we have been looking for proposals with the potential for development and a concept that allows us to hope they will assert themselves further when translated to the final project. It has been the jury's conviction that only the most magnificent, scalable interventions can withstand the attacks all projects come under when estimates have to be made and projects are to be realized in the tough and thoroughly regulated world of the construction industry.

CONCLUSION

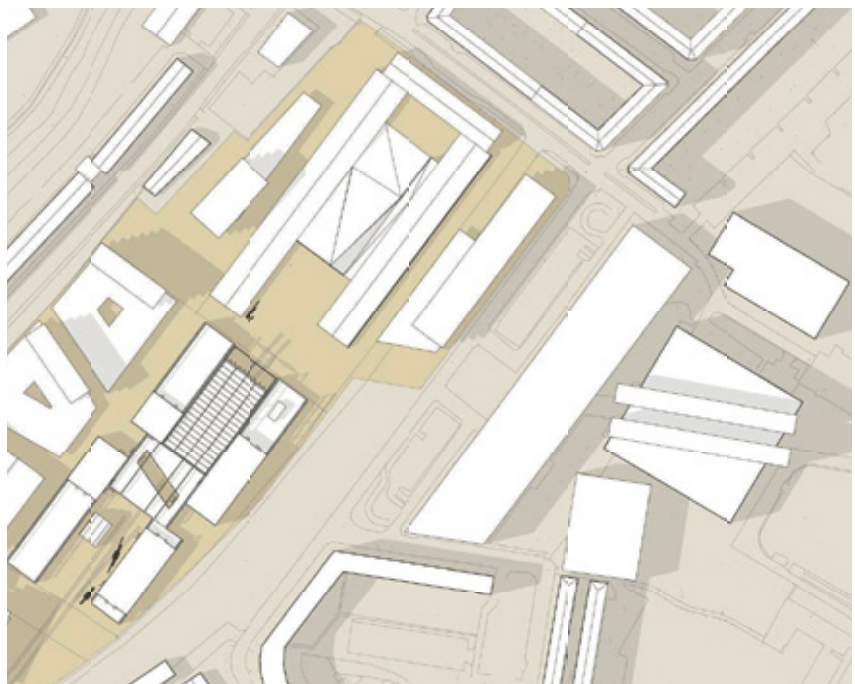
In choosing the three winners and the twelve purchased entries the jury hopes and believes to have taken an important step towards realizing a new school of architecture in Aarhus.

The three winning entries represent concepts, visions and ideas that all emphasise visibility, dialogue with the surroundings, access to outdoor areas and large spaces for experiments and making prototypes. They are robust in their basic form and use of materials and strong enough to be changed over time - without losing their power. They are general to an extent that enables ongoing completion, without being indifferent in their point of departure. Last but not least, they focus on creating the best possible physical environment for training architects with a Scandinavian tone and international format. A place where you can engage in a visible dialogue with the outside world about what architecture is actually about.

The jury has taken note of architectural statements that demonstrated the ability to read the

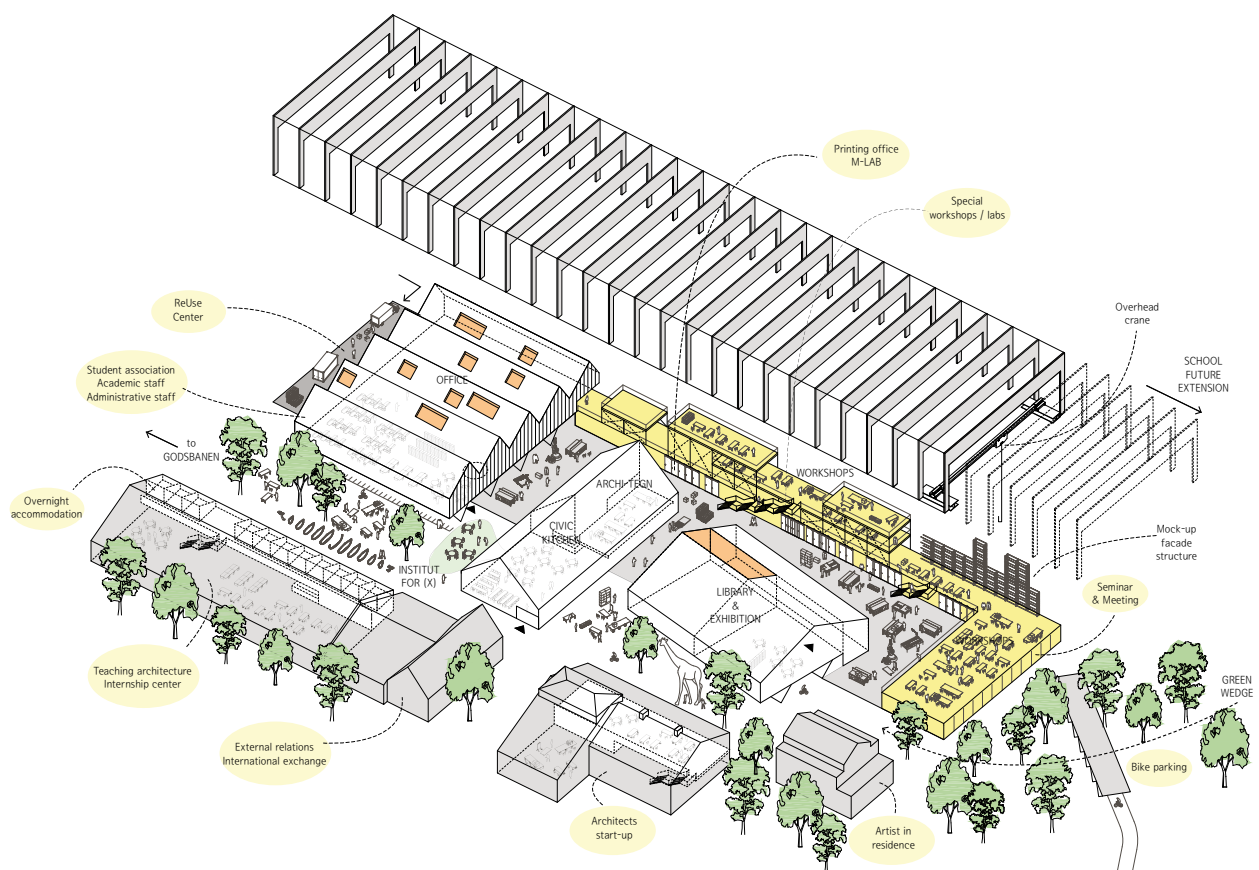


Entry #121/45434450 made by MAS, Site plan



Entry #010/03353539 made by Ask Hvas, Site plan 1:4000

potentials of Godsbanearealerne – the green wedge, the urban space at Godsbanen, the east-west axis - and which have been able to successfully juggle the challenges of the brief and come up with a proposal that may support the competition initiator's aim: that the new school of architecture in Aarhus should be a very special place in the city.



Entry #073/28727413 made by DV2C2,
Conceptual Drawing



WINNERS & PURCHASES

ONE OF THREE EQUAL FIRST PRIZES OF DKK 200,000

OPEN CAMPUS #101/37641897

ERIK GIUDICE ARCHITECTS

FRANCE/SWEDEN

The design proposal presents a clear and convincing location in a public context. The conceptual approach embodies the idea of the future school as a tool box - an open structure - which is general in many ways and allows for change.

RELATION TO THE SITE

Aarhus School of Architecture is proposed arranged in an east-west direction, perpendicular to and immediately south of Godsbanen. This would support the overall intention of strengthening the urban district's east-west connection. This intervention helps create a clear relation to Godsbanen, located to the north. The space between these two buildings creates a clearly defined square which might help invigorate a central urban meeting place in the area. The intervention was an unexpected surprise to the jury and belongs among the best entries in the competition. In accordance with the planning framework of the project, the proposal, however, requires the school to be arranged within this location without exceeding 10,000 m².

To the south of the school of architecture is indicated a simple site plan with well-arranged building volumes. The understanding of the site is enhanced by the fact that the green wedge runs through the new building, leading to the central square. Thus anchoring the two general landscape features in one unit. The site plan is well-arranged and robust. The area is clearly defined and structured to create a fine framework for the further development of the area. The solution creates a good flow in the area, invites people to move around a great deal and provides excellent opportunities for diverse outdoor spaces and environments.

IDEA, ARCHITECTURE, FUNCTION

The architectural solution follows a clear structural principle that leaves an elegant and distinctive impression. Site logistics are rooted in industrial rationality with a regular, structurally flexible grid of clear zones. The concept is enhanced by differentiated climate zones in the building and large south-facing sliding doors that support and facilitate the connection between indoor and outdoor areas.

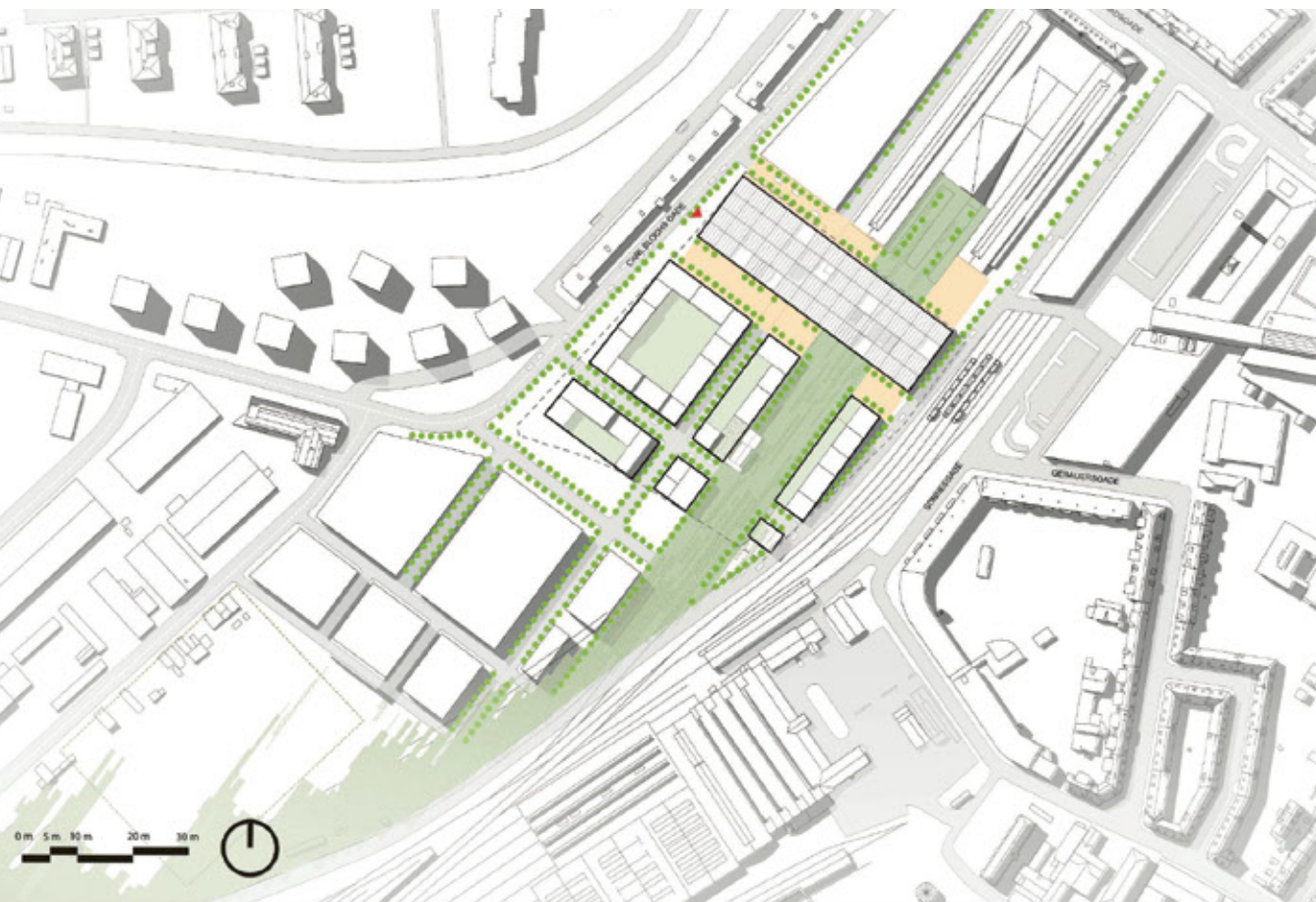
The quality of the layout is based in the orderly and systematic structuring of uses on four levels within a regular building volume. On the ground-floor level, the green wedge penetrates the building as an unheated space. At Carl Blochs Gade, where the main entrance is located, life in the streets can also be drawn into the building by means of sliding doors. The city, in a manner of speaking, flows through the building, allowing for interaction between the school of architecture and the public - a good feature which provides several opportunities in relation to teaching.

Study spaces are arranged as a bridge above the green wedge, unifying the body of the building, which is divided in two in the three levels below. This solution - a building which is in many ways separated into different units - would pose a challenge in relation to the internal organisation of the school. The proposal contains an inherent duality that may make form and programming objectives appear inconsistent in relation to one another. Dividing the building causes a loss of compactness and flexibility and may seem counterproductive to the school's many uses. Methodically separating uses from one another in separate horizontal layers while simultaneously

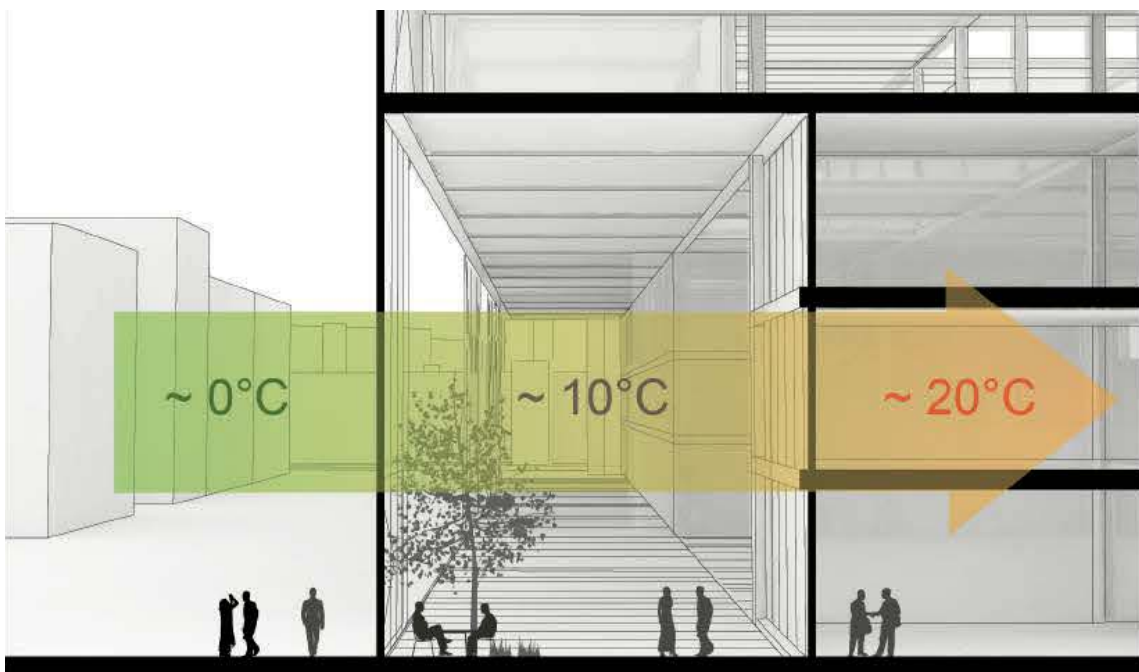




Exterior perspective made by Erik Giudice Architects



Site plan 1:4000 made by Erik Giudice Architects



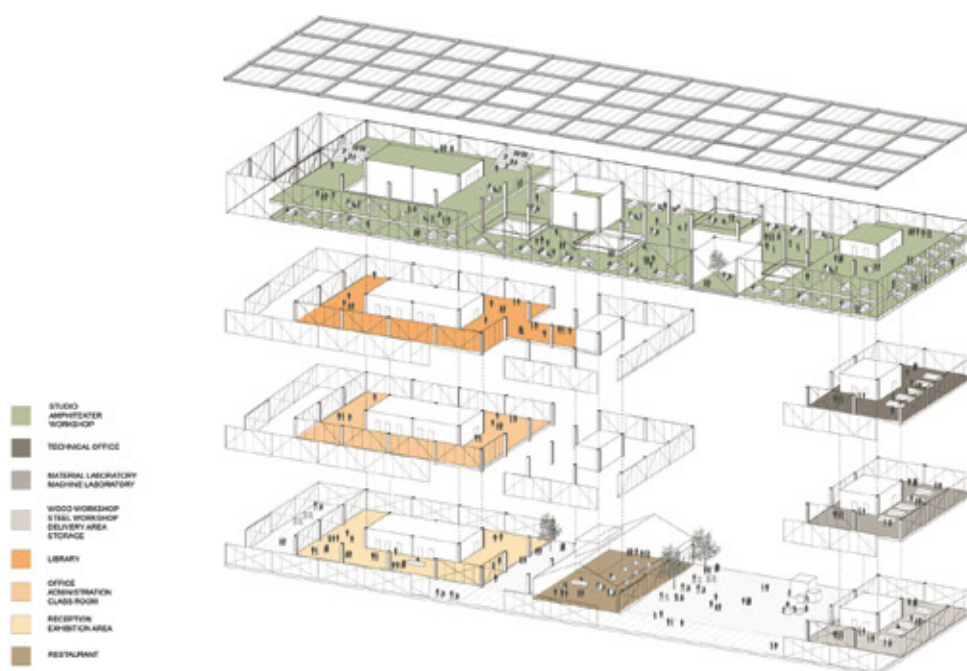
Conceptual diagram made by Erik Giudice Architects

cutting through the building impedes the desired close symbiosis between the school's many activities. One can see some degree of industrial rigidity in the way spaces and structures are manifested, which appears contradictory in a school of architecture - a place characterised by a high degree of interaction between research and teaching. The bridge has contributed positively to the jury's discussions by challenging the requirements of the brief for the greatest number of multiple uses - everywhere. We have, in any case, chosen to believe that this schism can be turned into a positive feature in the further processing of the design proposal.

In terms of architecture, the bridge solution is a beautiful idea - aesthetically as well as metaphorically, but it would also present a significant challenge in relation to the construction budget.

SUMMARY: IN THE CONTEXT THE PROPOSAL FUNCTIONS IN A WAY THAT IS BOTH EFFORTLESS AND CLEAR, PROVIDING STRUCTURE TO THE URBAN LANDSCAPE IN A REFINED WAY. THE BUILDING ITSELF HAS A DISTINCT ARCHITECTURAL CHARACTER WITH EVIDENT QUALITIES.

HOWEVER, THE WAY INTERNAL FUNCTIONS ARE ARRANGED SUGGEST A CHALLENGE THAT HAS TO BE DEALT WITH IN THE NEXT PHASE. ALL THINGS CONSIDERED, OPEN CAMPUS IS, HOWEVER, A FASCINATING EDIFICE.



Conceptual drawing made by Erik Giudice Architects

ONE OF THREE EQUAL FIRST PRIZES OF DKK 200,000

A-LAB #156/64130476

BRIAN VARGO, JONAS NIELSEN & MATHIAS PALLE

DENMARK

The solution presents a clear layout of the site and the public space. The basic concept is a generally open structure that provides good contact and interweaves all the layers of the proposal – in the urban space and within the building. The proposal distinguishes itself by creating a good relationship between theory and practice and between general and specific areas.

RELATION TO THE SITE

The building has an unobtrusive identity and is integrated into its surroundings through a confident intervention. The school of architecture is proposed organised in the north-south direction immediately south of Godsbanen. This approach helps create a clear relation to Godsbanen and the green wedge, which runs parallel to the school. The green wedge is proposed as a public space that is able to interact with the school's activities and enrich the relationship and interaction between the institution and the urban environment. The green wedge is made into an unpretentious and diverse arena with pavilions and workshops - a fine invitation to make architectural education more conspicuous and visible to the public.

The remaining site plan is rooted in an urban backbone provided by Carl Blochs Gade. The site plan is simple and robust. The area is clearly defined and provides a good framework for further development of the area. The proposal contains fine and differentiated outdoor environments that allow for a good flow and for people moving lively around in the area. The solution for the green wedge appears a little vague and should be defined in more detail in the further process. The proposal might benefit from defining a stronger encounter with Godsbanen in a

central urban space with intimate leisure areas. The traffic flow in the area has been planned in such a way that the school is located with good conditions for arriving visitors from both the built-up side to the north, near Carl Blochs Gade, and from the south side, characterised by a soft landscape. In this way the concept enhances the linear track bed-like nature of the area and brings into play the site's history. Metaphorically speaking, architecture can be rolled out into the world.

IDEA, ARCHITECTURE, FUNCTION

The building's structural system seems well-considered. Its transformation into more manageable but nonetheless coherent spatial sequences is among the competition's best attempts at making structural principles that enrich the spatial contexts. The concept has a clear identity with a proper structurally flexible grid of well-defined zones. The design is embellished by large sliding doors that make possible contact between indoors and outdoors areas. The quality of the layout lies in the orderly and systematic structuring of uses, located in three levels within a rational and regular building volume.

The building is organized in a three dimensional way, resulting in a 'spatial matrix' in which theory, practice and the various uses are merged to form a diverse and rich spatial structure which allows for several educational opportunities. The planning principle of methodically weaving together functions vertically and horizontally supports the desired symbiosis between the many activities of the school. Bringing together the architectural programme within a rich continuous arena, with horizontal open and closed layers, in combination with decentralised vertical spaces creates useful variation in the overall building structure. This re-

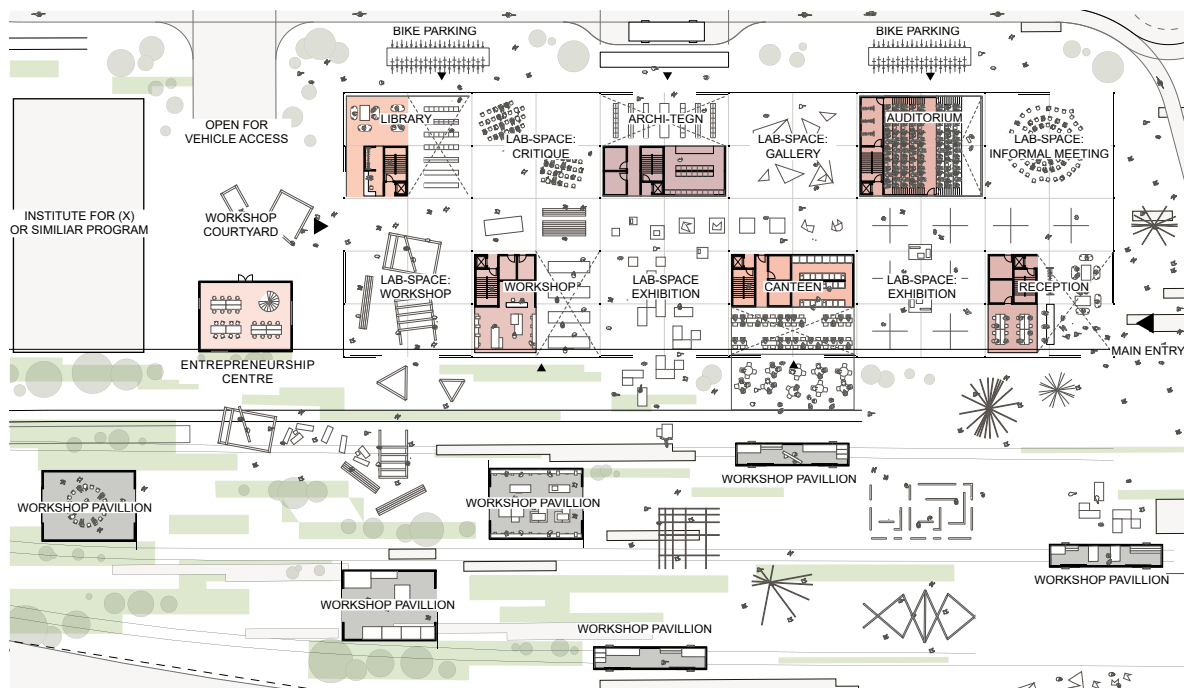




Exterior perspective made by Brian Vargo, Jonas Nielsen & Mathias Pallo



Site plan 1:4000 made by Brian Vargo, Jonas Nielsen & Mathias Palle



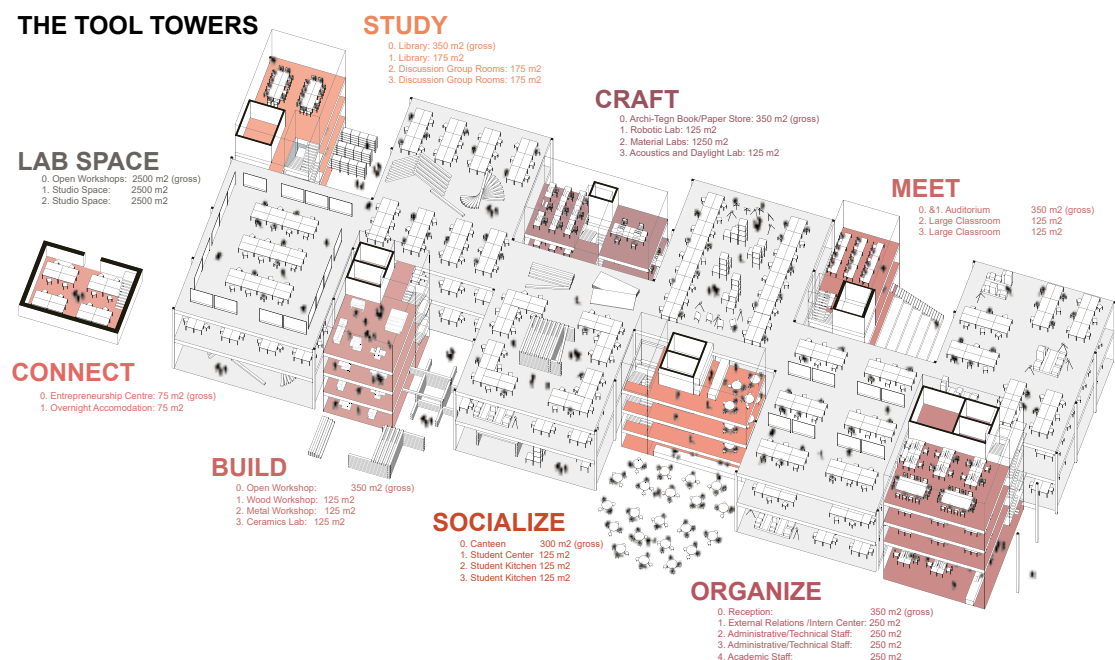
Plan of the ground floor 1:1000 made by Brian Vargo, Jonas Nielsen & Mathias Palle

sults in many good and flexible combinations of use, but also in several acoustic challenges and needs that have to be resolved to provide space for contemplation and concentration.

The entry appears relatively pragmatic and realistic both economically and environmentally. The building is consistently designed as a kind of academic workshop environment with close integration between practical and theoretical teaching and research contexts. In construction and choice of materials the building is a raw and robust framework for the studies and the research that would unfold in such a building - as a laboratory the school of architecture can make its own.

SUMMARY: THE ENTRY WORKS VERY CONVINCINGLY IN THE CONTEXT AND HELPS PROVIDE STRUCTURE TO THE URBAN LANDSCAPE IN A PLAUSIBLE WAY. THE ARCHITECTURAL EXPRESSION OF THE BUILDING, HOWEVER, IS SOMEWHAT ANONYMOUS, YET POSSESSES AN ASTOUNDING NUMBER OF QUALITIES THAT MIGHT BE DEVELOPED FURTHER - PARTICULARLY IN TERMS OF THE WAY IT IS ORGANISED.

THE A-LAB ENTRY DEFINITELY HAS THE POTENTIAL TO BE DEVELOPED INTO A SUSTAINABLE SCHOOL OF ARCHITECTURE AND IS, IN GENERAL, AN INTERESTING 'ANATOMICAL' SOLUTION WHEN SEEN IN RELATION TO THE OPPORTUNITIES PROVIDED BY A FUTURE ARCHITECTURAL EDUCATION.



Conceptual drawing made by Brian Vargo, Jonas Nielsen & Mathias Palte

ONE OF THREE EQUAL FIRST PRIZES OF DKK 200,000

AN OPEN FRAME FOR ARCHITECTURE #220/92070479

ATELIER LORENTZEN LANGKILDE DENMARK

This proposal places the school of architecture in a public context in a general and overall way. The proposal approaches the school of architecture as a single building volume on a large scale with good potential for change over time.

RELATION TO THE SITE

In terms of architecture, the proposal appears resolved, presenting a captivating and elegant design, but is somewhat uncertain in relation to the green wedge and Godsbanen. The proposal organizes the remaining functions between the school of architecture and Carl Blochs Gade, respects the green wedge, but does not seem to develop any nuanced relationship to the close contextual surroundings. The jury, however, considers this to be a challenge that might be solved by applying the same elegant and distinct approach that was used in the interior of the building. The building's demarcation between indoor and outdoor areas hints at the possibility of creating zones and places that might root the building to the site in a better way.

IDEA, ARCHITECTURE, FUNCTION

The building-related solution has a clear architectural appearance with a concept that gives the proposal a clear identity as a kind of generous academic hangar.

Basic logistics are rooted in a rational, proper building prism with programmed fields. The concept is reinforced by differentiated zones. Some take the form of spaces within spaces, others are open bright areas. Large sliding doors contribute to a contact between the indoor and outdoor areas. The concept of the proposal is also based on a floor with an open area that is in use all 24 hours of the day – whereas the three inner build-

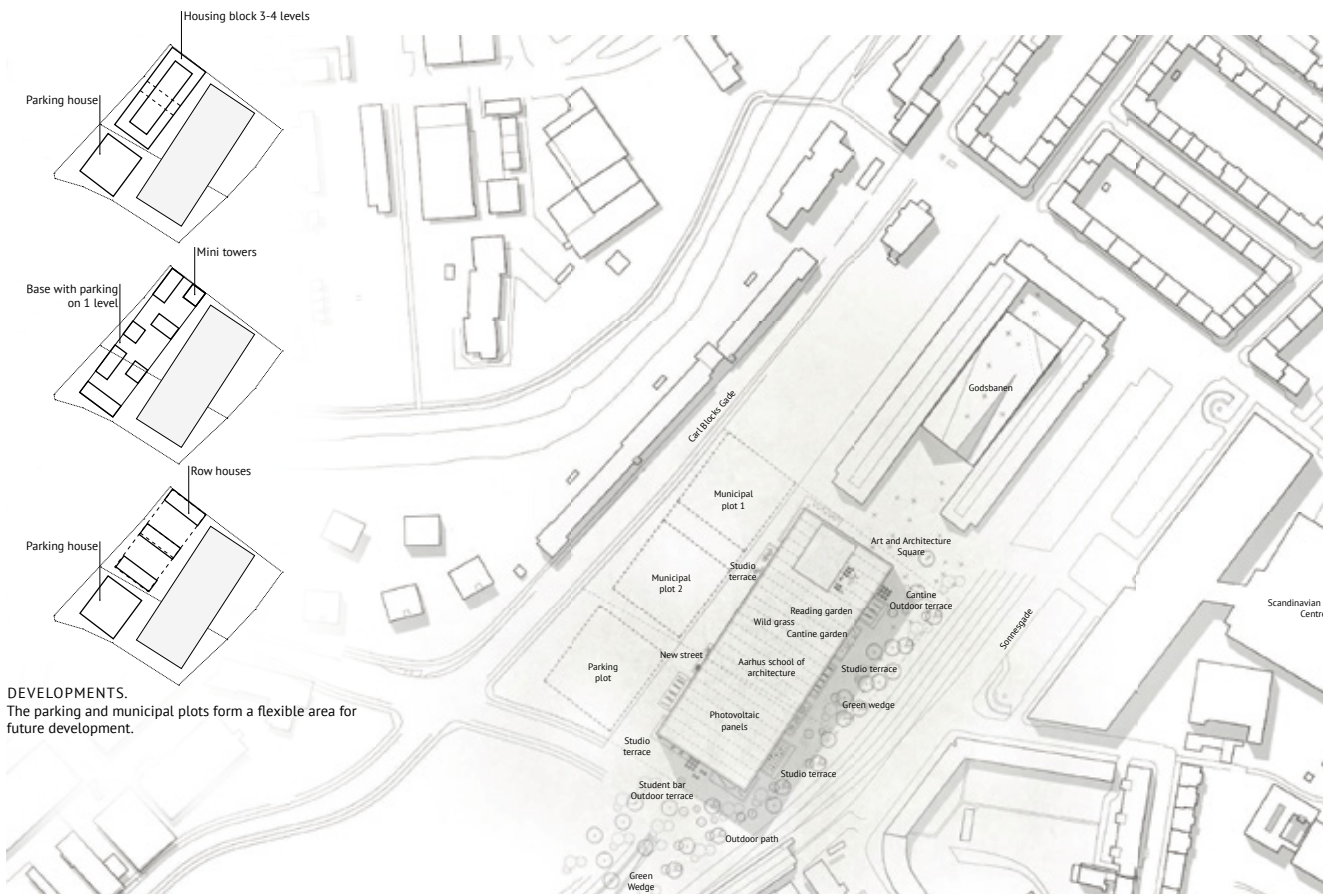
ings have more limited opening hours. Study spaces are organized on the ground level and relate to both indoor and outdoor spaces. This gives the large floor plane an interesting design which has not in the same way been redeemed in the building volume. This solution also poses a challenge as study spaces are organized in very open spaces. This needs to be further developed in order to achieve the necessary intimacy for individual students.

The great quality of the proposal is the relationship between a fascinating range of materials, the distinct building volume, the large open space, and the inner buildings. The proposal also uses the roof as a resource, in the form of a green garden with solar panels. The arrangement consisting of the inner buildings, the existing tarpaulin building, a glass house and a wooden house help to create a refined and versatile environment with the potential of becoming a distinctive feature of the new school of architecture. Combined with multipurpose, high-ceilinged spaces, the inserted smaller volumes, in processed forms, provide a school with an architectural basic structure that contains a functional and programmatic flexibility in a longer perspective. The solution, however, seems oversized in terms of volume and footprint. For this reason the proposal is economically extremely challenging and should be reduced in scale as the architectural composition is distilled further. The jury, however, believes this would be possible without critical loss of architectural qualities.



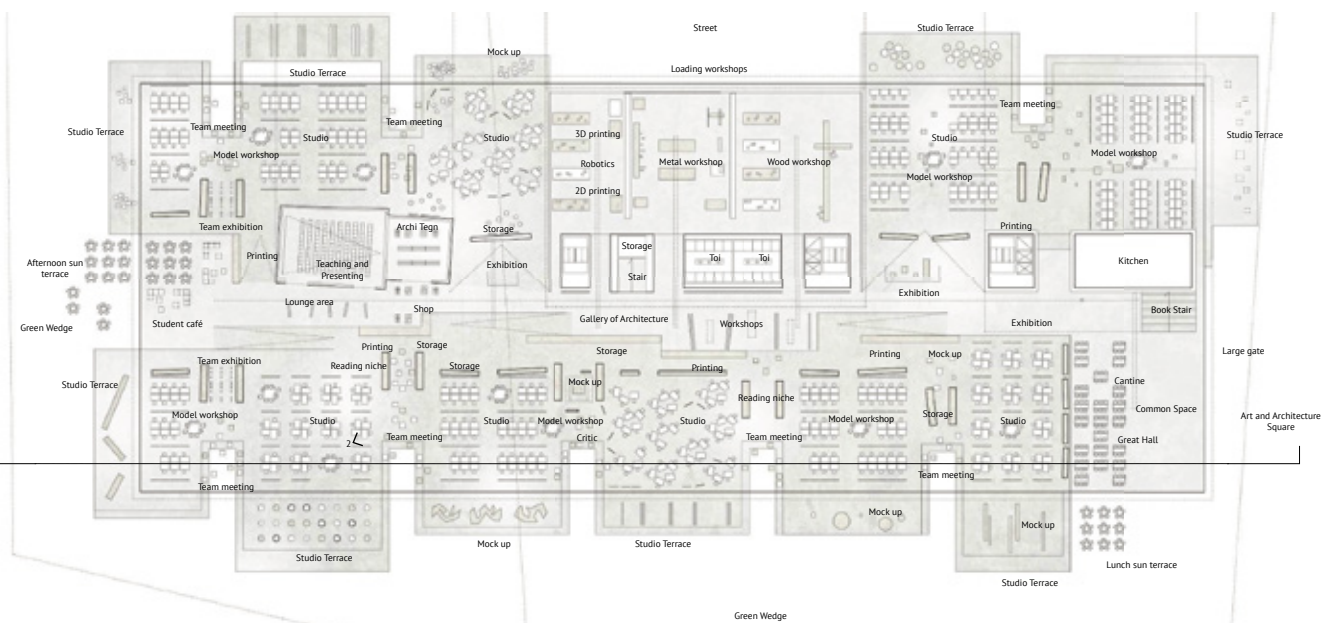


Exterior perspective made by Atelier Lorentzen Langkilde



DEVELOPMENTS.
The parking and municipal plots form a flexible area for future development.

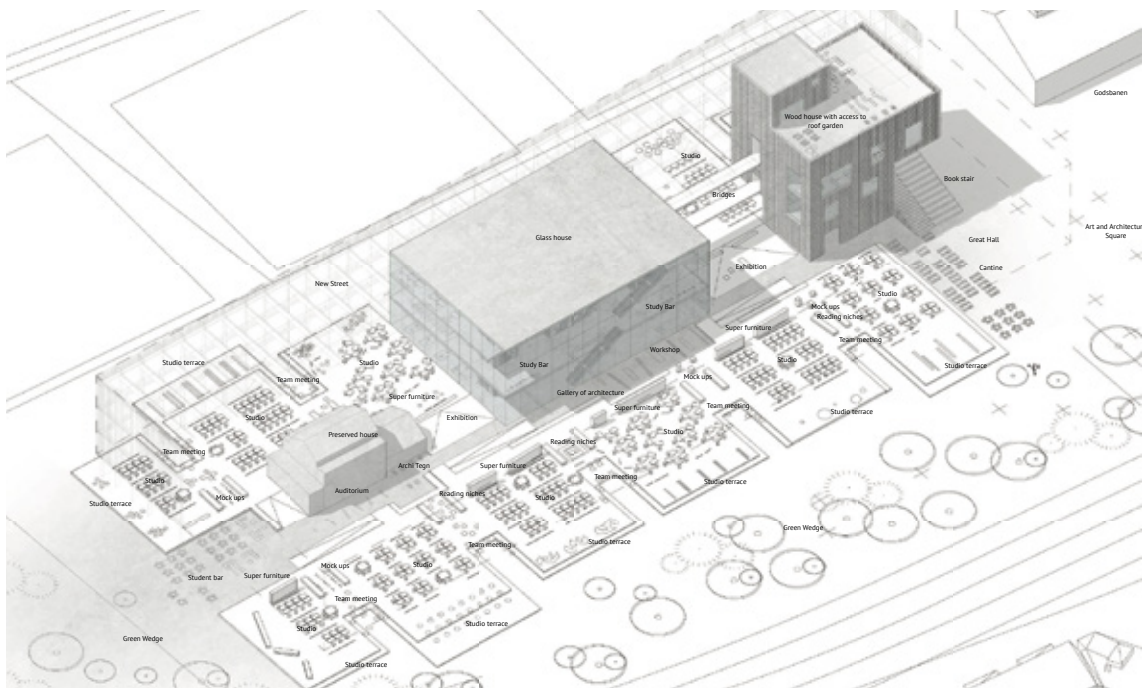
Site plan 1:4000 made by Atelier Lorentzen Langkilde



Plan of the ground floor 1:1000 made by Atelier Lorentzen Langkilde

SUMMARY: THE CONCEPT NEEDS TO BE ENHANCED AND DEVELOPED IN RELATION TO THE SITE PLAN BUT THE JURY FINDS THAT THE CONVINCING ARCHITECTURAL STATEMENT IS SUFFICIENTLY STRONG TO WITHSTAND THIS. THE BUILDING ITSELF IS CHARACTERISED BY AN ARCHITECTURAL QUALITY AND NATURE THAT HAS BEEN SO CAREFULLY PREPARED AND HAS SUCH A FINE COMPOSITIONAL STATURE THAT WE FIND THAT THE OVERALL ARCHITECTURAL CONCEPT MIGHT ACTUALLY BE HONED FURTHER BASED ON A MORE COMPACT AND REALISTIC BRIEF FROM THE COMPETITION INITIATOR IN THE NEXT STAGE.

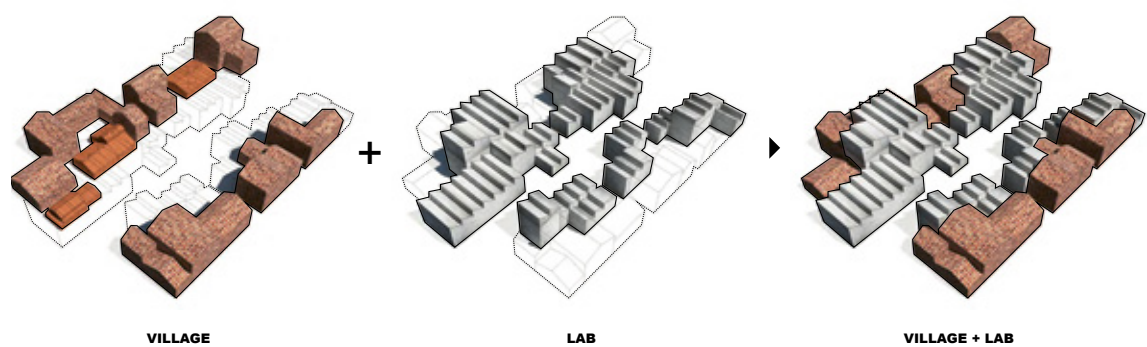
DESPITE THE ABOVE OBJECTIONS, THE PROPOSAL IN GENERAL REPRESENTS A FASCINATING EDIFICE WITH STRONG SPATIAL RELATIONS AND AN INTERESTING RANGE OF MATERIALS.



Conceptual drawing made by Atelier Lorentzen Langkilde



Exterior perspective made by ADEPT



Conceptual diagram made by ADEPT

PURCHASE DKK 25,000

ARCHITECTURE VILLAGE + LAB #011/03641494**ADEPT**

DENMARK

Inspired by the informal atmosphere at Gods-banearealerne, which should preferably be maintained, the modest scale of the locality is applied with a downsized and dissolved village-like site plan around an open paved street space. Existing buildings are used for the school and new buildings added. Everything is staged structurally using a grid-like structure, the fields of which can be filled with brick and glass, reflecting a self-emerged industrial complex.

The additional buildings in the competition area, which are suggested built in brick (like the existing buildings), are contrasted by a more transparent laboratory structure, providing high-ceilinged multi-usable workshop facilities for the school.

The proposal offers a clever staging of alleys, passageways and courtyard areas in a well-composed and somewhat 'cute' site plan, demonstrating a credible and well-proportioned residential construction of 3-5 floors facing Carl Blochs Gade.

As a school of architecture the separate units are deemed inexpedient, and the spatial descriptions and the appertaining sections are not convincingly articulated architectonically. The proposal was, however, chosen for purchase because of its empathy and respect for the identity of the place.



Site plan 1:4000 made by ADEPT



Exterior perspective made by Bogle Architects



Interior perspective made by Bogle Architects

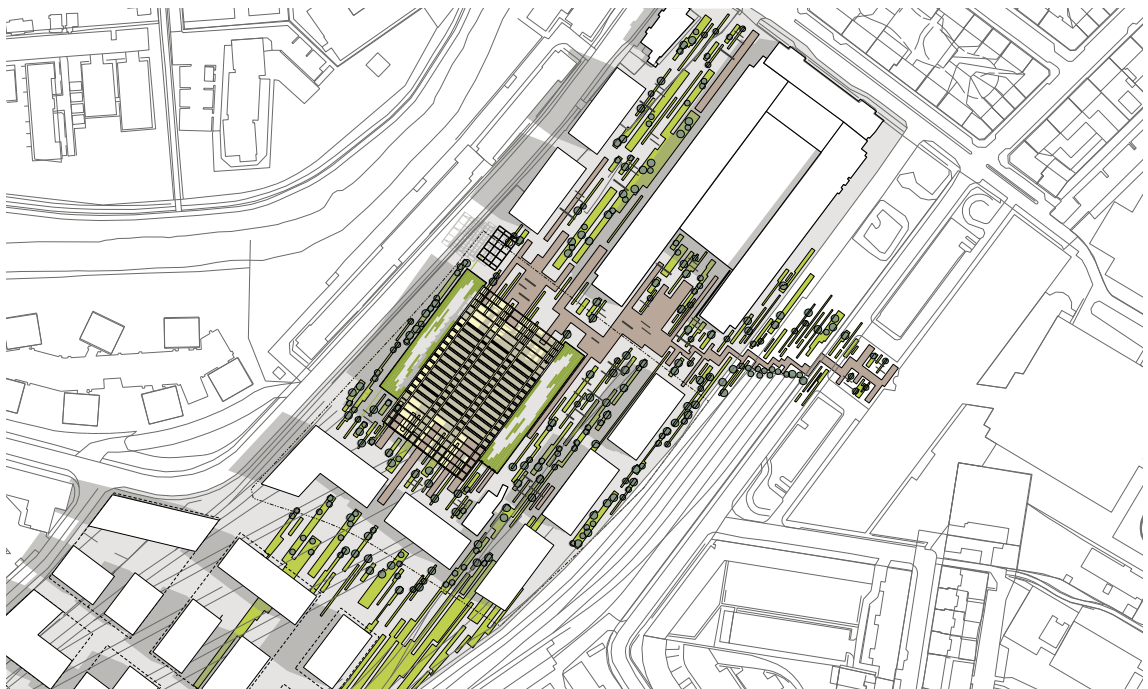
PURCHASE DKK 25,000

NEW AARCH #014/04344322**BOGLE ARCHITECTS**

UNITED KINGDOM

The entry has a clear strategy in relation to the site plan where the school of architecture is placed parallel to Carl Blochs Gade, and the additional architectural programme is placed to the south and east. In this way the former railway goods terminal 'Godsbanen' and Aarhus School of Architecture are placed on an equal footing. This intervention helps create a certain atmosphere of variety in the east-west direction that works very well in the context. The entry has furthermore been composed in a holistic manner which secures a green connection from the south. The overall site plan contains some fine characteristics and creates a comprehensible system for urban spaces, arrival and orientation. The entry's proposed design for the school of architecture has an interesting

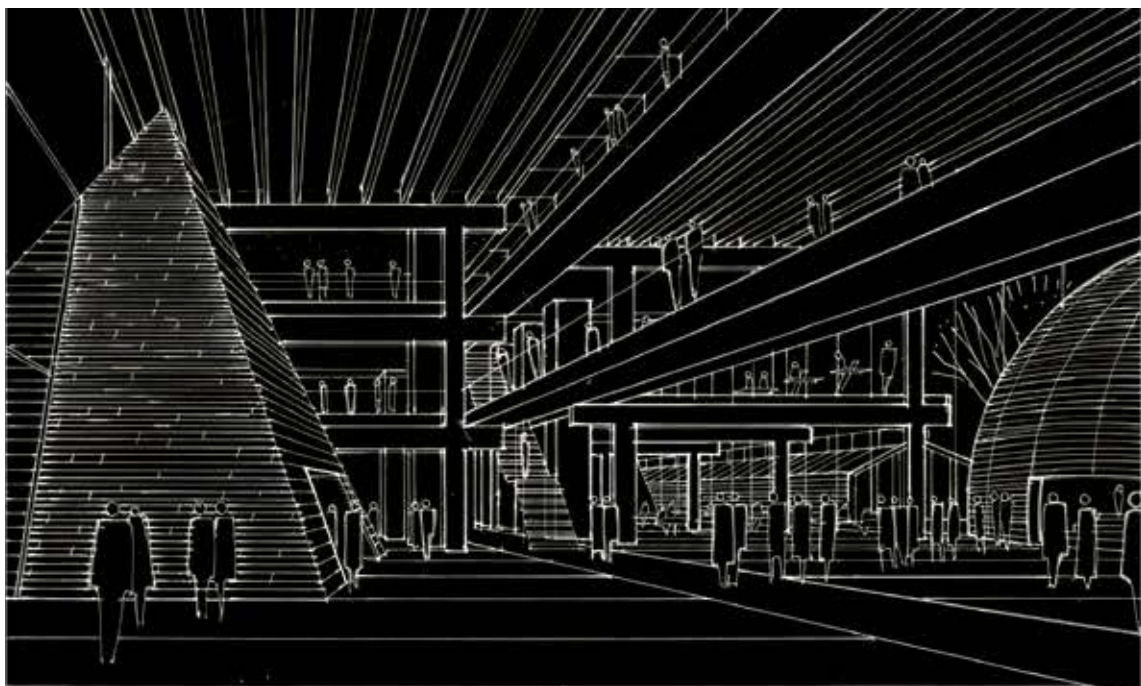
composition. The concept is based on a large exterior volume, in terms of scale, which can be compressed during a given period of time. Thus a permanent exterior frame is established which creates a large central space internally. Above this space a strong structural grid is designed where a room of boxes may be installed in time. This is fascinating as a principle but appears unrealistic in relation to the competition's practicability and economic conditions. Nevertheless, the jury would like to praise the idea of one large central arrival hall, the design of which is one of the most interesting of the competition. The first thing to greet a visitor is the school's activities in the workshop and mock-up facilities, and the visual contact and transparency between the functions of the building are given pride of place. The hall seems to be somewhat out of proportion but at the same time it appears to be an intense and beautiful space that might provide a good gathering place for the school. The building volume is clearly designed using resource demanding solutions. The entry contains several interesting qualities but does not appear realizable in relation to the terms of the competition and project.



Site plan 1:4000 made by Bogle Architects



Exterior perspective made by JWH Arkitekter + Vesthardt Arkitekter



Interior perspective made by JWH Arkitekter + Vesthardt Arkitekter

PURCHASE DKK 25,000

HOUSE OF ARCHITECTURE #037/12282623

JWH ARKITEKTER + VESTHARDT ARKITEKTER
DENMARK

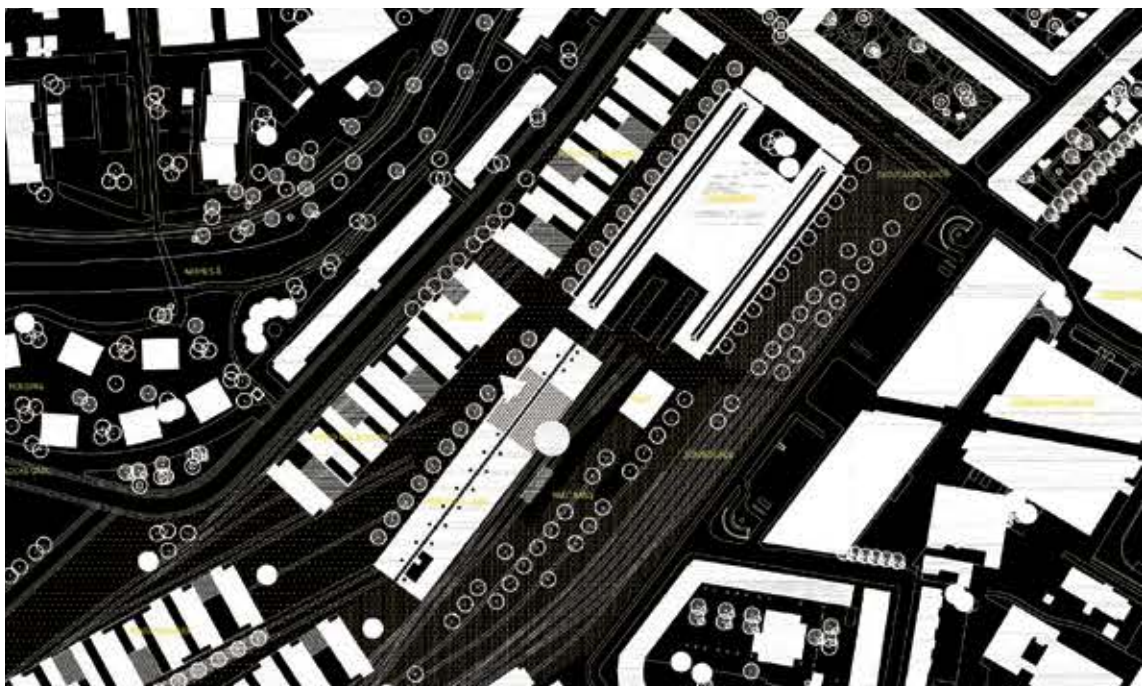
A slender and very well-proportioned building complex stretches away from the west leg of the Godsbanen building, presenting the new school of architecture as a beautiful, low and elongated building complex which in every way appears settled and well-articulated. The proposed development structure facing Carl Blochs Gade is one of the very best of the competition, and it complements the low row of residential buildings on the eastern side of the road in a very flattering way.

The tarpaulin building, which is worthy of preservation, is effortlessly included into the large building and, along with an oculatory and an auditorium, lends variation to the otherwise formal

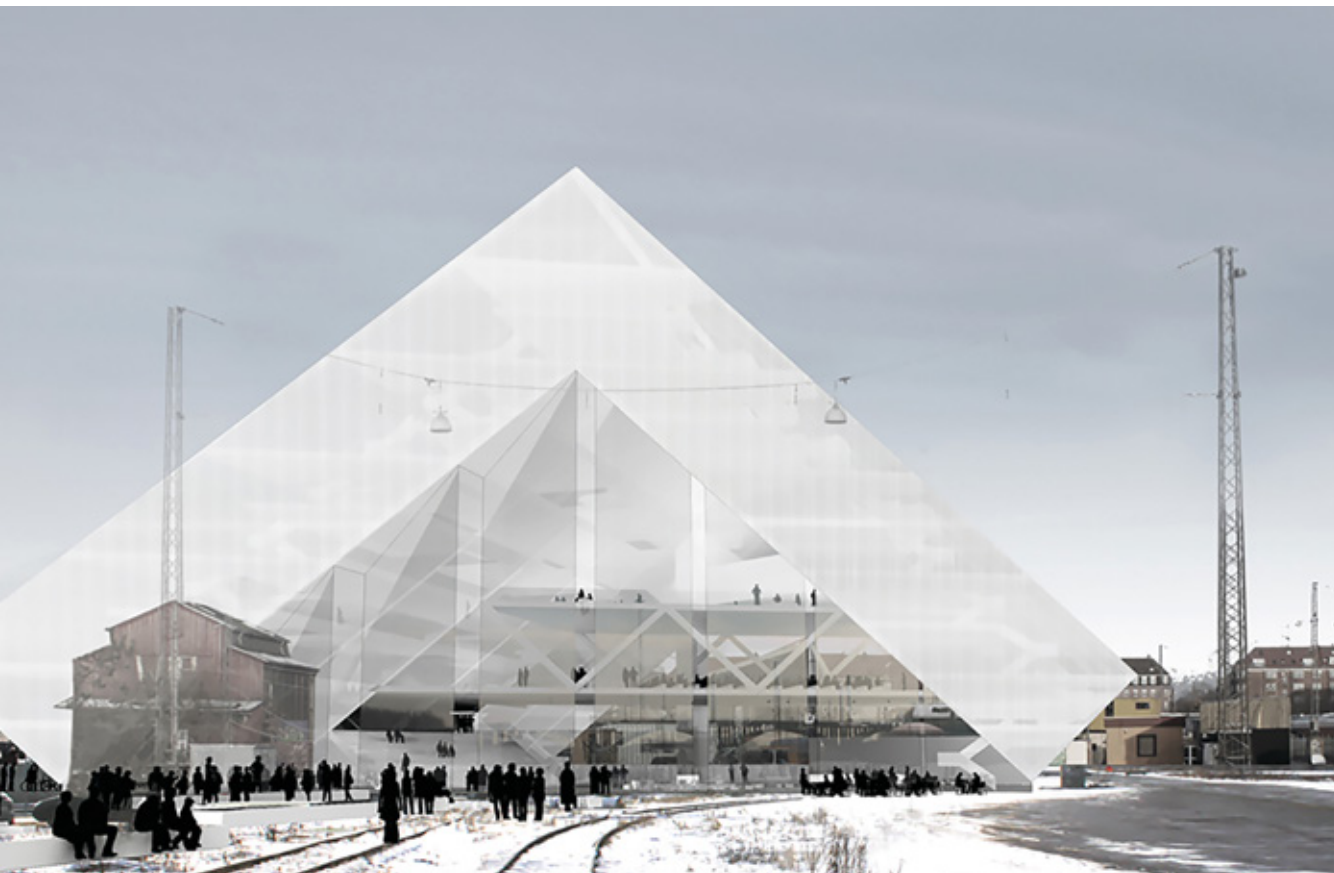
expression of the complex. The chosen building system, the simple geometry of the body of the building and the proposed spatial dispositions testify to an extensive insight into organizing a building and creating spatial variety within relatively 'dry' schematics. The jury was puzzled by the high-ceilinged rooms being assigned to the studios instead of the workshop facilities, which are placed in the more low-ceilinged section.

It is a 'democratic' building through and through where everyone appears to have the same relation to and association with the different activities and functions of the school. We find this to be both a quality and a challenge. Furthermore, the building seems to be organized based on well-known building models which apparently fail to challenge the school's activities sufficiently.

Despite the many spatial qualities of the proposal, the jury finds that it would be difficult for the building to accommodate a more changeable architectural programme over time. The jury wishes, however, to commend the entry for its well-organized and characterful appearance.



Site plan 1:4000 made by JWH Arkitekter + Vesthardt Arkitekter



Exterior perspective made by OP



Exterior perspective made by OP

PURCHASE DKK 25,000

A PRIMITIVE HUT #051/19127100**OP**

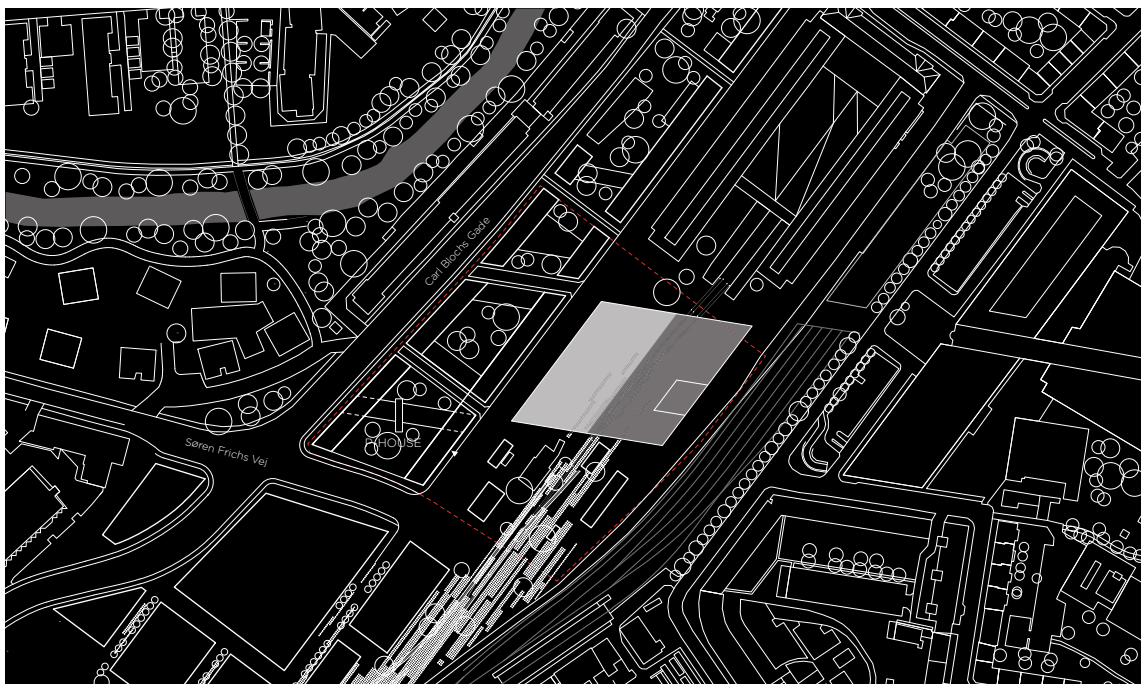
DENMARK

The jury wishes to commend this proposal for its conceptual boldness. The entrant attempts to create a strong frame based on the fundamental ideas of architecture. The building is shaped with an oversized roof, designed with permanent functions, which covers a space with an adaptable architectural programme. The roof – the building – is shaped as a triangular parallelogram-shaped prism and appears as an enormous object in the context. The school of architecture is located just south of Godsbanen, and the additional buildings are located along Carl Blochs Gade. With regard to the city plan, the main concept appears clear and simple.

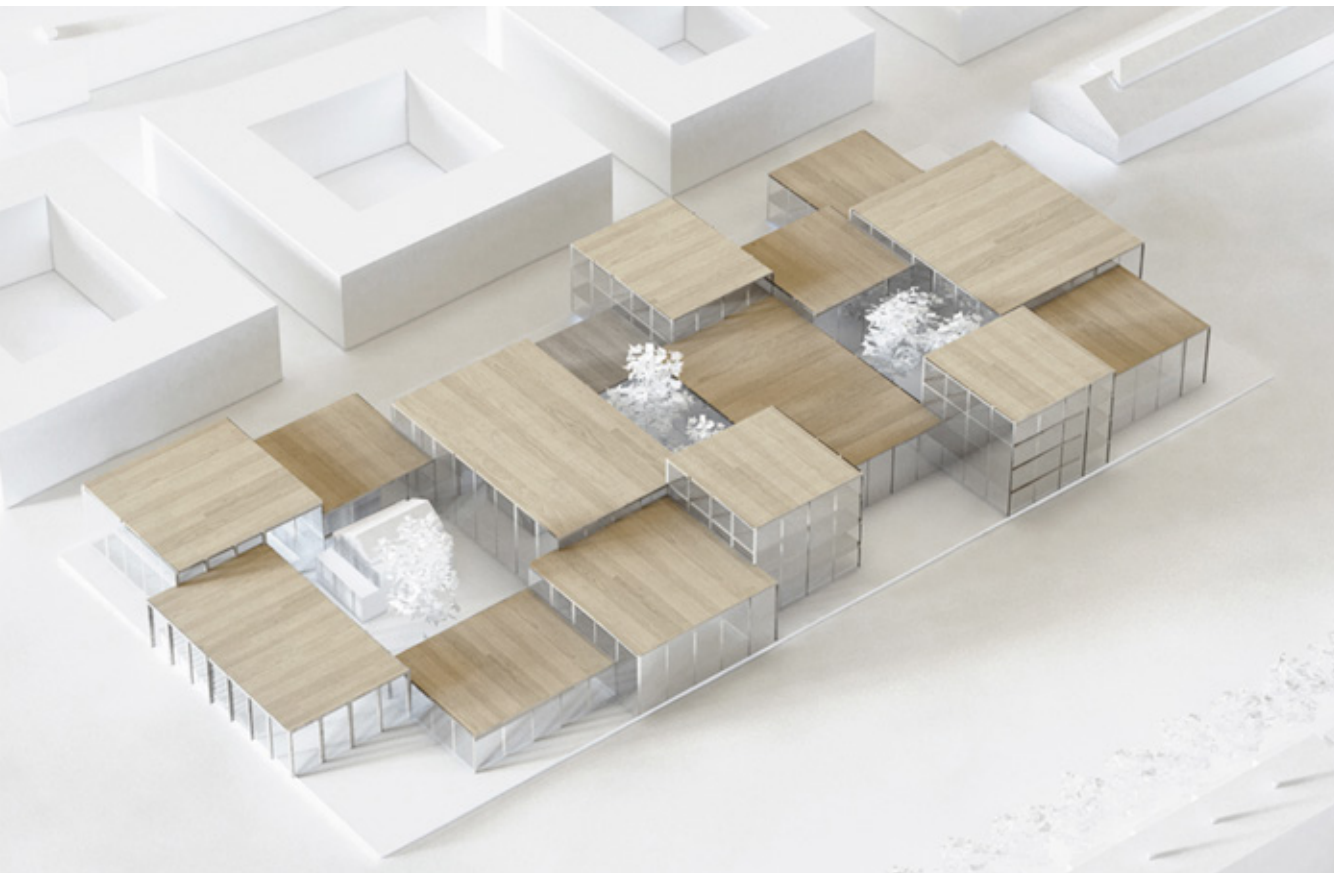
The building principle and its volume help determine the school's design and organization of pro-

gramme. Being an architecture school, the plan arrangement appears too static, formalistic, and functionally unsuitable in relation to the needs of a future architecture school. The powerful expressiveness of the design appears disproportionate to the aims of the competition. At the same time the entrant has made a valuable contribution: an architecture school should, to the best of its ability, expose the concept of architecture clearly to its surroundings!

The entry brings identity creation into focus and challenges the idea of how a school of architecture might form part of Aarhus' skyline. The visualization, which demonstrates the interplay with Aros, is by no means without merit.



Site plan 1:4000 made by OP



Exterior perspective made by EFFEKT Arkitekter + Kristoffer Lindhart Weiss



Interior perspective made by EFFEKT Arkitekter + Kristoffer Lindhart Weiss

PURCHASE DKK 25,000

NEW AARCH #060/22740814

EFFEKT ARKITEKTER + KRISTOFFER LINDHART WEISS

DENMARK

The new school of architecture is organized in a number of high-ceilinged halls built from wood. A total of 15 halls in different sizes and floor-to-ceiling heights are arranged in a relatively dense campus structure - supported by pillars - around three inner courtyard areas. The high-ceilinged halls are ascribed a high degree of applicability in general and appear light, open and with good daylight conditions. The movement pattern through the labyrinthine structure supported by pillars is not described further, and the jury found it rather unclear how many floors the design envisions.

Three blocks are indicated to be facing Carl Blochs Gade. The relatively 'flat' structure takes up quite a lot of space on the site and thus blocks

the green wedge. The many differences in floor-to-ceiling height seem a bit random; and as the differences are at the same time counterbalanced by excavations in the terrain, the overall impression is rather confusing and disorderly.

In spite of the rather 'chatty' juxtaposition of the halls, the jury has taken note of the versatile outdoor and indoor conditions of the facility and its willingness to demonstrate a reversible construction principle in wood which holds many functional and spatial possibilities. The displayed visualization of one of the workshops leaves a credible impression of the constructive principle and makes for a pleasant atmosphere.



Site plan 1:4000 made by EFFEKT Arkitekter + Kristoffer Lindhart Weiss



Exterior perspective made by Pablo Pita Architects



Interior perspective made by Pablo Pita Architects

PURCHASE DKK 25,000

#067/24707263

PABLO PITA ARCHITECTS

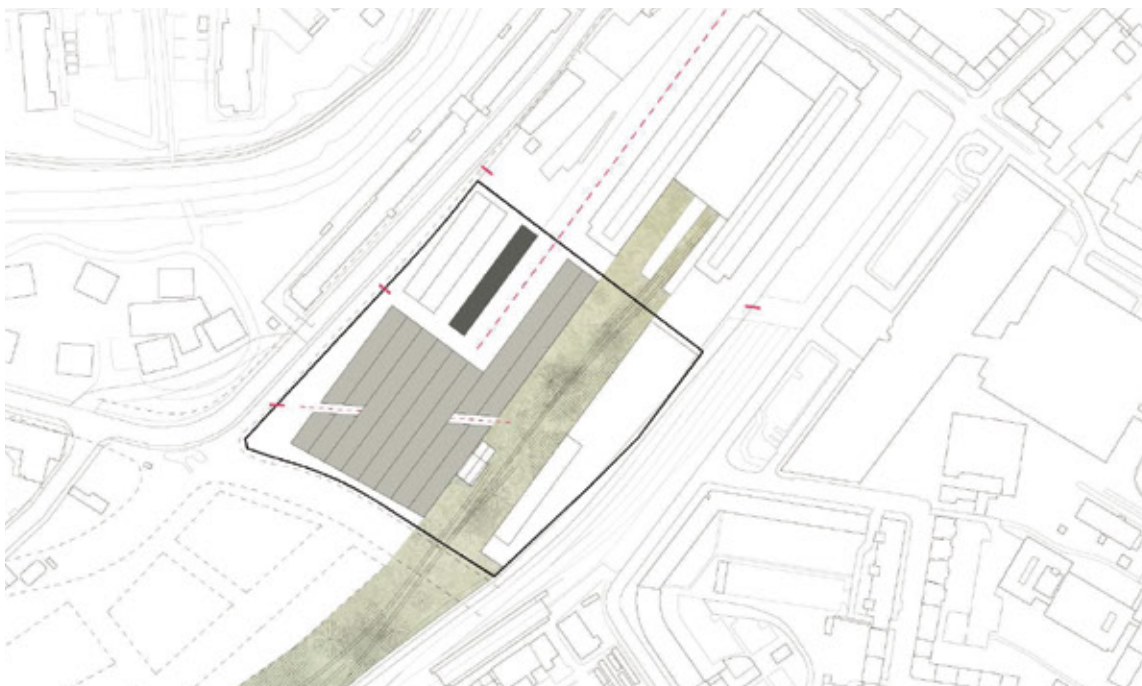
PORTUGAL

The entrant is an example of a very straightforward strategic method of realizing the school of architecture within a pragmatic framework. The proposal is organized primarily in one level as a volume consisting of four parallel pitched roof sequences which contain distinctive elements of the school's architectural programme. The building is traversed by a line running east-west which allows for passage in this direction. The building is located parallel to the green wedge and in its idiom appears closely related to Godsbanen.

The building has a large footprint and therefore takes up a large part of the competition area. Furthermore, the site plan is not very detailed and only provides a scanty description of interactions

between the city and the school of architecture – including the interaction between outside and inside activities.

Many of the entries in the competition have an unrealistic approach to the task in respect to the potential for implementation, and the jury therefore wishes to commend this design for its very straightforward and pragmatic approach to the brief.



Site plan 1:4000 made by Pablo Pita Architects



Exterior perspective made by Padilla Nicas Arquitectos



Interior perspective made by Padilla Nicas Arquitectos

PURCHASE DKK 25,000

NEW AARCH #129/50293570

PADILLA NICAS ARQUITECTOS

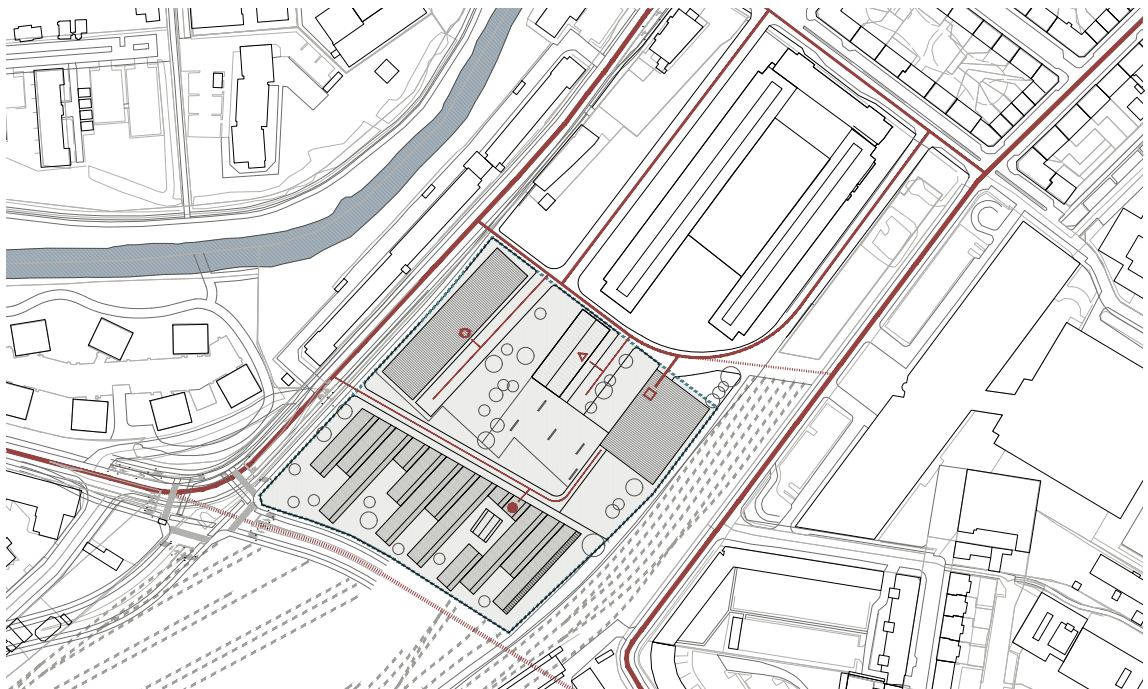
SPAIN

The school of architecture is organized as a serrated and partially floating shed roof structure in two to three floors facing east, located in the southern area of the site. The structure spans the entire width of the area covered by tracks leaving behind a somewhat inarticulate space between the school and Godsbanen. A heavy building of six floors is placed along Carl Blochs Gade. The car park faces the railway track area.

The serrated structure provides several roofed areas which are reserved for a future expansion of the school, among other things. From a building logistical perspective this, however, does not seem particularly well considered. The entry is accompanied by some evocative visualizations which, however, indicate a level of complexity which can hardly be realized within the defined budget framework.

The facade and sectional drawings imply a structural division consisting of an underlying heavy fundament and a light two-floor partially cantilevered shed-roofed construction which indicates a range of study spaces, which to the south have a nice view of the railway goods area and are to the north organized in double-height exhibition rooms. The displayed designs, however, appear somewhat schematic.

The design's distinguishing feature and strength lies on the level of the site plan and in its attempt to combine the wide railway track area and the green wedge to the south with a close and cohesive school structure. This merits a purchase.



Site plan 1:4000 made by Padilla Nicas Arquitectos



Exterior perspective made by Atelier CMJN



Interior perspective made by Atelier CMJN

PURCHASE DKK 25,000

A LEARNING ECO-SYSTEM #153/62661105

ATELIER CMJN

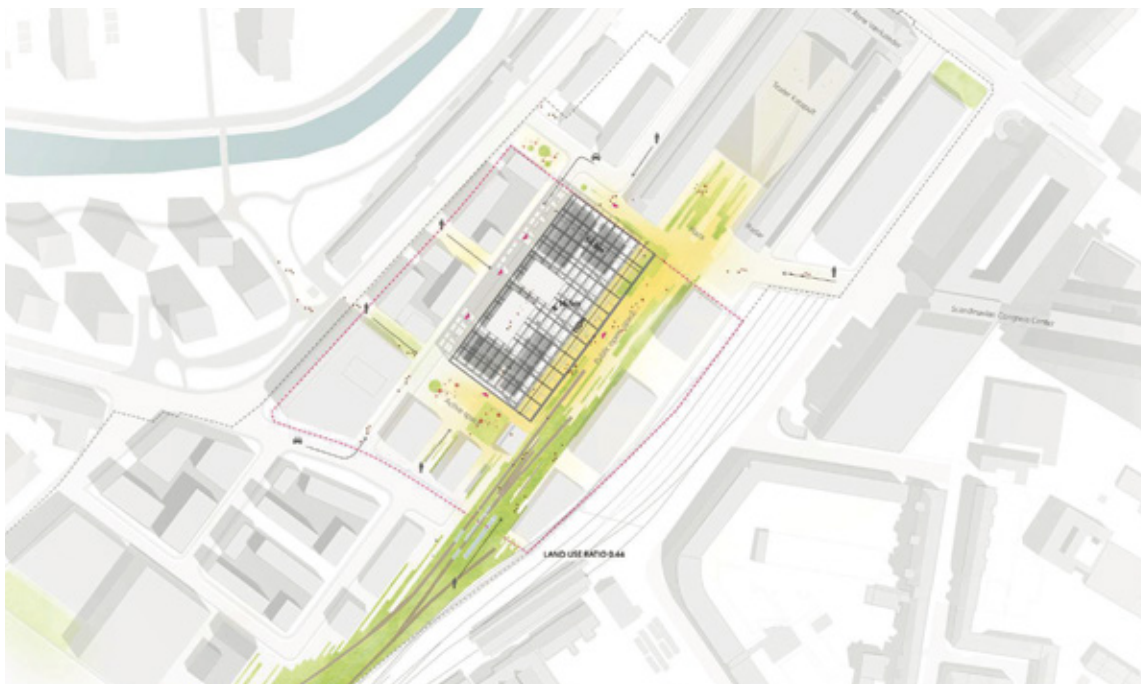
FRANCE

The entry has a distinctive approach to the urban planning issue. The overall concept of placing the school of architecture alongside the green wedge and with the additional buildings partly to the south and partly along Carl Blochs gade works well. All in all, this creates a clear coherence in the area.

The school of architecture is shaped as a distinct building volume with an overall steel structure dressed in transparent materials. The large volume contains a system of closed and open spaces which might work well in some specific contexts, but the structure lacks the necessary flexibility in terms of programming which the school will need over time. The large assembly space will, however, make a fine social and extroverted focal point.

The jury finds the entry interesting, but in relation to the goals of the competition, it does not find the environmental solutions convincing. The roof structure with its heavy cantilevered element dressed in transparent solar panels seems misplaced visually. Furthermore, the building appears somewhat alien in relation to the place and context.

The design is presented well, uncovering both its weaknesses and strengths. Nevertheless, the jury would like to commend the entry for its clear and interesting solution - especially the public space, which has a clear connection to the school's open spaces, the green wedge and the site in front of Godsbanen.



Site plan 1:4000 made by Atelier CMJN



Exterior perspective made by Taller 301



Interior perspective made by Taller 301

PURCHASE DKK 25,000

AN ARCHITECTURE SCHOOL FOR THE DESIGN/BUILD GENERATION

#159/65481966,

TALLER 301

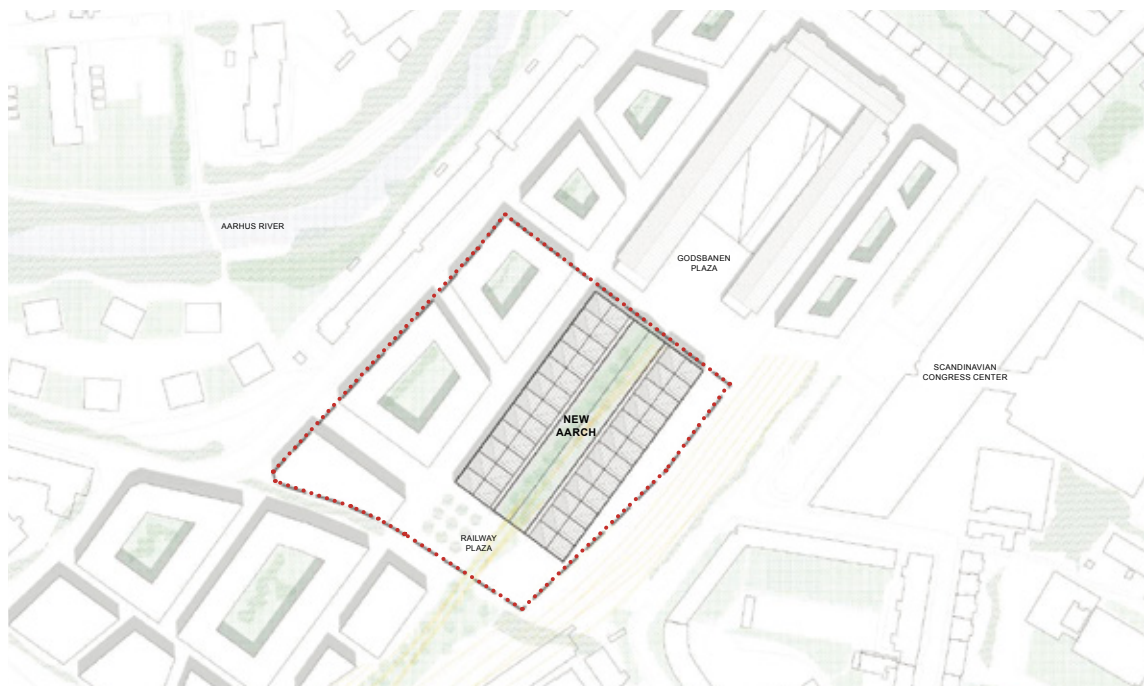
COLUMBIA

The main concept for this entry is to loyally replicate the two legs of Godsbanen in two new wings embedded in the terrain, organized mainly to accommodate the school's MA and BA programmes. The space between the two embedded wings is covered by a glass roof which serves as the school's public high-ceilinged street space. Here, the railway tracks are preserved and planted over. The entry operates with two focus areas: making visible the workshop facilities and introducing the public to the building.

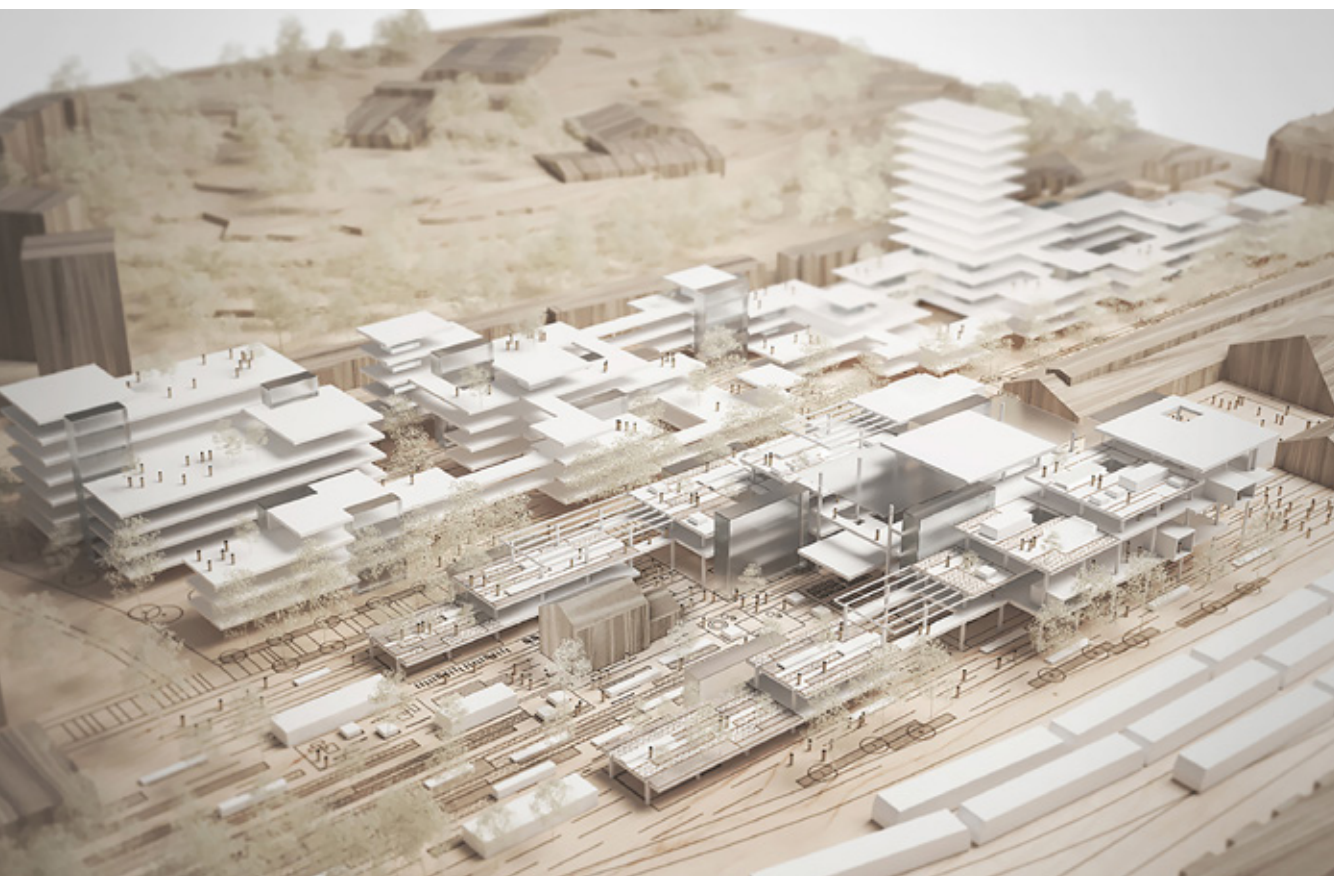
The entry makes an attractive effort to appear transparent, subdued and rational, and it raises the question whether an architecture school should present itself more as factory than a design office. In this, the design is only partially successful. The two wings are unpretentious and accompanied by credible visualizations of the embedded workshop facilities where more 'calm' functions are placed in boxes that can be raised and lowered as needed.

The chosen constructive principle seems casual and straightforward. The raising/lowering rooms, however, appear to be a doubtful solution – both in terms of construction and operation.

The jury found it difficult to fully understand the sectional drawings' roof profiles. Is it a shed roof or a pitched roof? However, this does not deprive the entry of a certain vitality and drive which the jury wishes to commend and award by purchasing the entry.

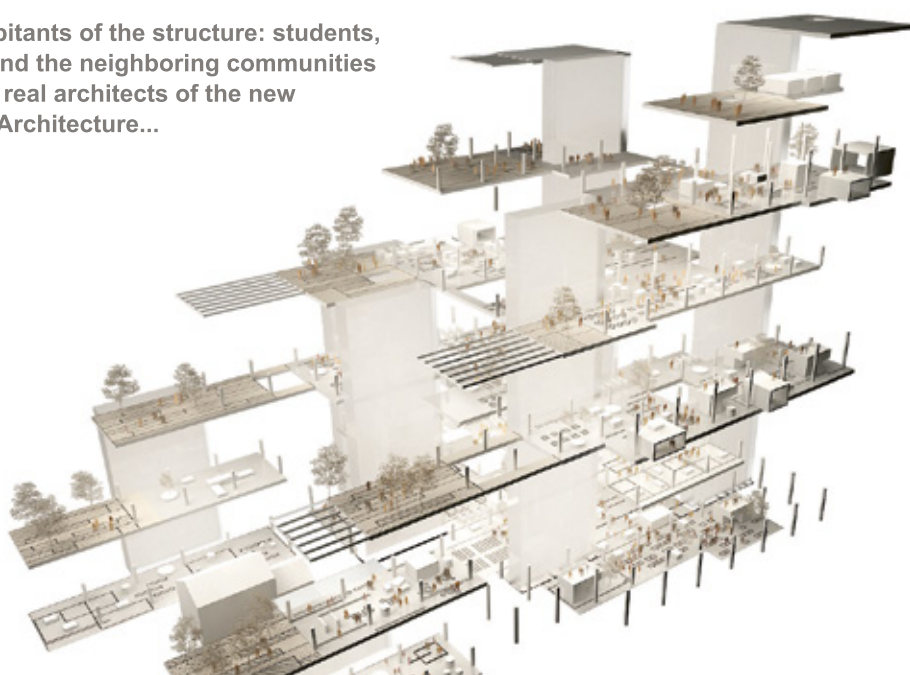


Site plan 1:4000 made by Taller 301



Exterior perspective made by AART architects

...the inhabitants of the structure: students, teachers and the neighboring communities will be the real architects of the new School of Architecture...



Conceptual visualisation made by AART architects

PURCHASE DKK 25,000

ENGAGING FLOWS #187/75651600**AART ARCHITECTS**

DENMARK

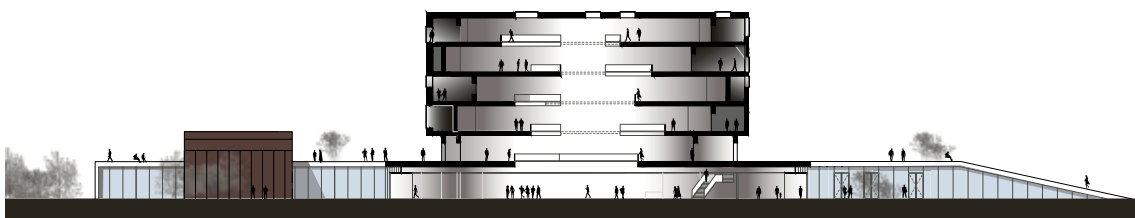
The entry applies a uniform strategy to the entire area: a constructive regular grid with pillars and horizontal varying floors in different dimensions. This structural approach to the development of the area is meant to contribute to the creation of a recurring hierarchical system with rooms in different scales. The entry appears abstract and only offers scarce information on the final architectonic gestalt. Nevertheless, the illustrations, along with the model, indicate the beginnings of an architectonic interplay that might develop into an interesting element of a future urban landscape. The proposal appears incomplete and naïve but at the same time it has definite potential. Although less important, the jury would furthermore like to praise the proposer's models and presentation technique.



Site plan 1:4000 made by AART architects



Exterior perspective made by MATTERS



Facade and section 1:1000 made by MATTERS

PURCHASE DKK 25,000

COLLABORATIVE INCUBATOR #189/75792043**MATTERS**

DENMARK

This design, as one of only few in the competition, is located towards the track areas in the east, organising the school of architecture as a low elongated building complex which, in the manner of a railway junction accommodates the movement from the south, and places the school at the transition between the city and the green wedge. Employing soft landscape movements a complex is depicted with utilizable roof surfaces which culminate in a centrally placed tower-like building in the centre.

As one of only few entries, the entry suggests a site plan which creates a significant place between the school and Godsbanen. Opposite to the track area a ribbon development is shown facing Carl Blochs Vej. This development encircles a west-oriented landscape space that supports the flat symmetric shape.

The structure in the centre of the complex - in the entire design actually - is depicted in a somewhat clinical and cold manner. At first, the jury was slightly puzzled by the BA and MA programmes being located in the tower building, but, at second thought, it might be precisely this cheeky touch: turning the 'hot silo of conversation and discussion' into the very tone of the school of architecture - which, along with the complex's distinct role as a marker of the crossing between the landscape-related wedge and the urban space, seduced the jury to recommend a purchase.

Moreover, the entry has given rise to an interesting debate concerning the division of zones, safety and the balance between the public and the private.



Site plan 1:4000 made by MATTERS



Exterior perspective made by JAJA Architects



WORKSHOP
The workshop building is a flexible, scaffolding-like steel frame wrapped with a textile membrane. The modular system can be adapted, changed and extended by the students, thus becoming a constantly transforming structure used for 1:1 mock-ups, experiments and manifestations.



TARPAULIN BUILDING
Architect and the print shop is located in the Tarpaulin building. The historical wooden house gives the new School building the charm and atmosphere as we know it from Nørreport.



THE BOOK TOWER
The information center is a big wooden shelf system housing the material, book and digital media collection.



THE CANTINA
The cantina is placed in the original customs warehouse. The building is cut to allow the seating to move into the open space. The cut reveals the layers of the building structure and cladding and thereby gives insights into former building traditions.



THE AUDITORIUM
The stage is formed as a two-sided auditorium with seating in each end of the stage. The glass building is wrapped in layers of curtains to give different levels of opacity depending on the activity inside.



THE ADMINISTRATION BUILDING
The administration and offices are grouped in a vertical tower creating a visual landmark for the new school. The tower's formal content is represented with the Mies' inspired facade.

Conceptual diagram made by JAJA Architects

PURCHASE DKK 25,000

EXPERIMENT AA #229/96685212

JAJA ARCHITECTS

DENMARK

The entry is characterised by a straightforward overall plan in terms of urban planning. The school of architecture has a simple exterior shape, located to the west of the green wedge, and is surrounded by the remaining buildings in the other directions. The proposed outdoor areas do, however, not appear very programmed.

The design appears abstract in relation to the context and distanced in terms of the programming of the solution which appears less strong and not quite ready for development. Nevertheless, the jury would like to commend the entry for its ability to develop an inspiring relation between the temporary and the permanent aspects of the architecture - both in relation to using the existing

building that was deemed worthy of preservation and in clearly shaping singular pavilions with a strong identity located within the overall general building project.

The entry distinguishes itself by acknowledging the fact that an architecture school will always be in continual development and change, but that it is also fundamental to establish a number of permanent and fixed points within a flexible structure. Therefore it is important to establish in the architecture a relationship between areas with a strong identity and areas with an open and changeable nature. In this way the entry makes a significant contribution to the competition.



Site plan 1:4000 made by JAJA Architects

OUTRO

THE NEXT STAGE

This open design competition is just one stage in the process leading to a new school. Prior to launching the open design competition, three consortia were prequalified for the next phase: the project competition. In this phase the three prequalified teams and the three winners of the open design competition will be competing to design the final building project, based on an architectural programme prepared on the basis of the results from the open design competition and a user involvement process carried out in the period between the two competitions.

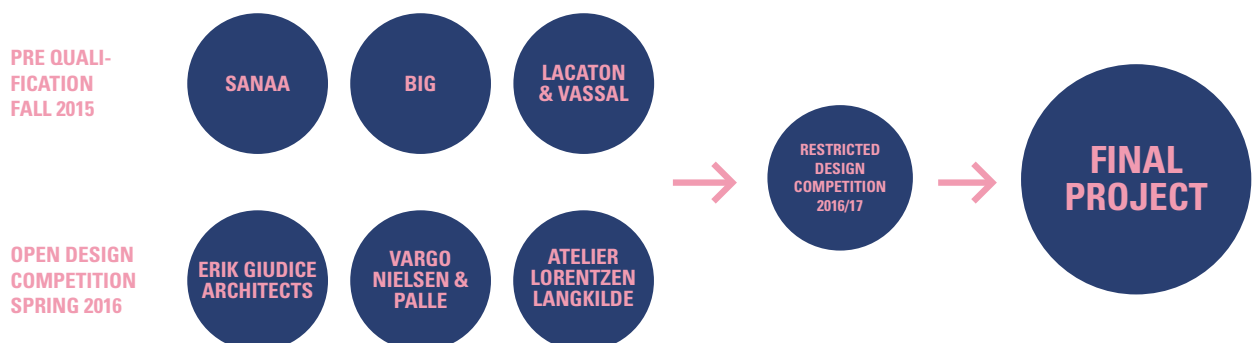
The open design competition has generated many ideas and input that have given us more knowledge about the future direction of the project. The open design competition has been an invaluable, enlightening and inspiring process which has prepared us to set out the right framework for the project on a more informed basis than before. The results of the open design competition should not be confused with the actual project. At this stage what is essential is the ideas and visions that will provide a basis for and contribute to the further process towards the final objective. Ideas and visions that can be transplanted to a project competition and eventually to the final project - as the supporting foundation of the project, if you like.

The first step of the further process is to determine the location of the school and the further

development of the area together with Aarhus Municipality. Aarhus Municipality has contributed to the assessment process with great commitment; and it is the hope of the commissioner of the competition that we can continue this fruitful cooperation towards a unified and well-thought-out master plan for the area.

In parallel with this dialogue, a process involving the school's management, user groups, external stakeholders etc. will set these stakeholders the task of analysing the winning and awarded entries and translate them into requirements and recommendations for the final building project. The results of the open design competition should, in other words, be seen as a rich catalogue which the users can now access, learn more from and challenge. The process will be facilitated by NORD Architects and, of course, The Danish Building & Property Agency, who has the overall responsibility for the project.

The open design competition has been a singularly exciting step on the road towards a new school, and the jury are beginning to be able to imagine the eventual shape of the school. Good architecture emerges from a dialogue with the people who are looking forward to something. And the jury looks forward to the coming process. We expect the new school of architecture to be a very special place in Aarhus.



THANKS TO ALL THE PARTICIPANTS IN THE OPEN DESIGN COMPETITION

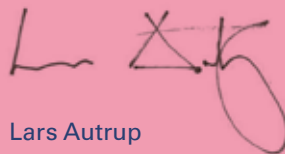
4SITE ARCHITECTS / 8486 ARCHITEKCI / ACHA ZABALLA ARQUITECTOS / ADEPT / AGENDA / A. A. GARCÍA / A. SHINOLOV/ A. VAVUSHKA/ ALEX POULSEN ARKITEKTER / A.W. CHUI-KWAN & K. NAGANO / A.V. LAUTRUP/ A. AAKJÆR / A.KARIMKHAN / A. VARVIN / ANDREW STOANE ARCHITECT / A. ISKALA / ARCH_IT + PIOTR ZYBURA / ARCHITENSIONS / AREAL ARKITEKTER / A. KARVAT / A. HVAS / ATAT / ATELIER CMJN / ATELIER LORENTZEN LANGKILDE / A. ASLAN, B. ARINÇ, H.A. ERKAN & Z. OKURSOY / B. BOŁOZ & M. KITALA / BCVA / B. A. ODDGAARD / BLANK-PAGE ARCHITECTS / BMA – ARCHITECTURE / BOGLE ARCHITECTS / BOYARSKY MURPHY ARCHITECTS / BRADY MALLALIEU ARCHITECTS / B.C.F. LEE / B.VARGO, J. NIELSEN & M. PALLE / C+ ARCHITECTS / C. M. PAZOS / C. MORAN, B.W. AHEARN & C. DAHL / CARL TURNER ARCHITECTS / C.S. RIBEIRO, L.A. SOARES & P.S. SOUSA / C. MAURICIO & G. HENRÍQUEZ / CEBRA ARCHITECTURE / CHEUNGVOGL ARCHITECTS / C.Y. CHAN & S.M.TAN/ C. KOUSGAARD / C. TVERSTED / COFFEY ARCHITECTS / COLORCLOUDSTUDIO / D. ZERBI / D. RICCARDO / D.T. HOOPE & D. CHAN / D.C. MARCHÁN / D. TANASA / DECODE URBANISM OFFICE / DEGLI ESPOSTI ARCHITETTI / DIGITAL-AB / DIID ARCHITECTES / DIMITRIOS ZOUPAS | ZOUPAS ARCHITECTS / D.M. DORDEA & I.M. IONESCU / DV2C2 / EFFEKT ARKITEKTER + K.L. WEISS / ELA / E. LAOUTARIS & K.E. KALOMOIRI / ERIK GIUDICE ARCHITECTS / ESTUDIO TORRES NADAL / F3AA ARCHITECTS / F8 ARCHITECTURE / FABrect / F. FOONDUN, J. KIM & C. MESNARD / F. MOSCHETTI / F. ENNAS / F.G. PRADA / FORA / F. LØNOW, E. ROJO & M. SANCHEZ / F. NAGASHIMA / FÜNDÇ / GÁLVEZ + WIECZOREK ARCHITECTURE / GARY MARINKO ARCHITECTS / GiGA / GOLZARI-NG ARCHITECTS / G.C. MEDINA & M.G. RODRIGUEZ / G. NICHOLLS / GUSTAV APPELL ARKITEKTKONTOR / HADJ KACEM & BELKH-IRIA ARCHITECTURE / H. TAN & Z. GU / HEIKKINEN-KOMONEN ARCHITECTS / HENEGHAN PENG ARCHITECTS / H. FRICH / HESSELBRAND / HOLSCHER NORDBERG ARKITEKTER / HOUT ARCHITECTURE / H.M. BAEZA, M.B. BENTZEN & M. COSTAN / IAN RITCHIE ARCHITECTS / I. TITOV / I. B. GIMENO / I.KARRAS + PLUSR CHITECTURE / J.M. RIVERA & A.D. JEREZ / JAJA ARCHITECTS / J.F. HOLMQVIST-LARSEN / J. AASE & K. WIİK / J. PEDERSEN / J.R. SÁNCHEZ / J.Á. CHECA & A.O. CAMACHO / J.S. MORENO / J.T. BACHMAN & K. STRANIX / JUHYUNKIM ARCHITECTURE / J.R. GORMSEN & J.Ø. KALLEHAVE / JUSIN & PARK / JWH ARCHITECTS + VESTHARDT ARCHITECTS / KAMPEN ARKITEKTER / K. KITAHARA / K. TAKADA, M. NISHIZATO & Y. YAGIHAV / K.A. PAYERO / K.THORSELL & P. RASMUSSEN / KITOKO STUDIO / KOIS ASSOCIATED ARCHITECTS + STELIOS KOIS /

K. BRANDSEN / KSESTUDIO / KUROKAWA ARCHITECT / LAB-B / LAHDELMA & MAHL-AMÄKI ARCHITECTS / LAP / LENSCHOW & PIHLMANN / LIMBROCK TUBBESING ARCHITECTURE AND URBAN PLANNING / LINE SOLGAARD ARKITEKTER / LINK ARCHITECTURE / LIOR SEGAL / LOOP ARCHITECTS + TEMBO ARCHITECTS + ASLA ARCHITECTS / LORCAN O'HERLIHY ARCHITECTS / LOT-EK / L.B. GÓMEZ / LYCS ARCHITECTURE / MADe / MALE ARCHITEKTEN / MANIPULAZIONE INTERNAZIONALE / M. LO MAURO / M. J. THORUP & T. SKOV-CARLSEN / MARTINS ARCHITECTURE OFFICE + BRANDÃO COSTA LIMA / MAS / M.P. LAXALDE / M. MASTALSKI, O. STORJOHANN & I. TSIOMA / MATTERS / M. HASAN / M. NTOURAKOS / M. NAUJALYTE & A. SADZEVICIUS / MONGE + SALCEDO ARCHITECTS / MORPH ESTUDIO / MUTOPIA / NAN ARCHITECTS / NATHAN ROMERO ARKITEKTER + COAM & BAUEN / NEXO ARQUITECTURA / N. LEBEER & R. ANAITYTE / NIKKEN SEKKEI / NO.MAD ARQUITECTOS / NOBEL ARKITEKTER / N.M. PEDROSA / O. KOROTKYKH & M. KRAMAR/ OOZE ARCHITECTS / OP / O. STAV & T. RIGLER / OYO / P.C. ELIZONDO / PABLO PITA ARCHITECTS / P. ROQUERO / PADILLA NICAS ARQUITECTOS / PALAZON STUDIO / P. VENTURELLA & C. SCOTUCCI / PAUL PREISSNER ARCHITECTS / P.S. CARVALHO / P. VAPAAVUORI / PETRĂȘ ARCHITECTURE / P.T. HOANG & K.T. VANH & T.N. XUAN & V.T. TIEN & H.D. ANH / P. DI MATTEO / P. NIKOLAI / POTHOLE / P.T. SUGMAR / R.J. FERMIN / R.E. BECK, M.L. KLOGBORG & S.M. KRISTENSEN / S. BECCHIO & P. BORGHINO / S. MARILA / SEBASTIAN IRARRÁZVAL ARQUITECTOS / S. HENRY-FRESNEAU / SIMMETRIA ARCHITECTURAL BUREAU / SLETH / SMAR ARCHITECTURE STUDIO / SOGO AUD / SPANT STUDIO / SPOL ARCHITECTS / SRFAC / S.M. TEETERS / STUDIO 201, ZU XINGHUA / STUDIO CHRISTIAN WASSMANN / STUDIO DEBRIS / STUDIO MAPAA / STUDIO ZA ARHITEKTURU + I. FRANIC / S. NABEEL / SUPERPOOL / S. LINDVALL & L. NEGRINI / SV60 CORDÓN + LIÑÁN ARQUITECTOS / S. GRIFFEL / SVET VMES / S.H. HANSEN, I.F. PEDERSEN, J. BRØNDSTED & A. ROLVUNG / S.K. AAGAARD / T. PONTE / T. RAHMEH & H. MATAR / TALLER 301 / TEKTURA / TERROIR / T. RUDNICKI & N.K. JENSEN / T. O'BRIEN, S. RUBIN & R.L. TOFTDAHL / T.A. SEMAAN, J. CHALHOUB, R. GHANNAM, R. HOBEIQA & E.A. MRAD / T. RIGG / T.W. CHUN / TYRO / ULARGUI Y ASOCIADOS / URBAN OFFICE ARCHITECTURE / UUFIE / VIAR ESTUDIO ARQUITECTURA / WAI ARCHITECTURE THINK TANK / W. PENG / WHITE ARKITEKTER / WILLIAM MATTHEWS ASSOCIATES / XDGA XAVEER DE GEYTER ARCHITECTS / X-PO ARKITEKTERNE + P. HANSEN / Y.T. CHAN / YAN LI / Y. WELL / AART ARCHITECTS / AAU ANASTAS

SIGNED BY THE JURY



Kristian Lyk-Jensen



Lars Autrup



Signe Primdal Kæregaard



Jens Thomas Arnfred



Ingelise Bogason



Reiulf Ramstad



Torben Nielsen



Lisa Sørensen



AARHUS SCHOOL OF ARCHITECTURE



DANISH BUILDING
AND PROPERTY AGENCY