





















**TABLE SHOWING THE PROGRESSION AND DEVELOPMENT OF IMPLEMENTED "ACTIONS"**  
A SERIES OF FULL-SCALE TRANSFORMATIONS OF ABANDONED HOUSES IN COOPERATION WITH THISTED MUNICIPALITY



GENERATION OF ACTIONS	ACADEMIC YEAR	APPROACH	IMPLEMENTED ACTIONS	RESPONSE IN THE NEWS	ENCOUNTERS WITH VILLAGE COMMUNITY	CONFERENCE (c) & JOURNAL PAPERS (j)
A	2010-2011	- <b>Educational aim</b> -Section as method -Documentation of process	A	-2*DR - P4 -9*local newspaper -2*national newspaper -Article Arkitekten	local residents: >100	
B	2011-2012	- <b>Educational aim</b> -Structure -Tectonics -Materials -Documentation of process	B B1 B2 B3	-1*TV2 national TV -1*TV2 regional TV -2*DR - P4 -1*DR - P1 MORGEN -2*local newspaper	not registered	
C	2012-2013	- <b>Educational aim</b> -3 tracks: Context, space og material -Documentation of process	C	-2*local newspaper	local residents: >50	-PhD Fellowship
BEGINNING OF PhD PERIOD						
D	2013-2014	- <b>Doctoral research</b> -Prototype 1:1 -Partial demolition -Controlled ruination -Local interaction	D D1 D2	-2*local newspaper -2*Arkitekten periodical	ad hoc: >50 written responses: 2 parish council: 1 parish evening: 1 chair parish council: 6 sexton: 8 authorities: 15	-AlterRuralty3 2016 (c) -Space and Flows 2015 (c) -Re-imagining Ruralty 2015 (c) -ADAPT-r 2014 (c) -ISSRM 2014 (c) -A+C journal 2017 (j) -Future Anterior 2016 (j)
E	2014-2015	- <b>Doctoral research</b> -Prototype 1:1 -Importation of a new programme -Partial demolition -Local interaction	E E1	-1*DR 1 National TV -3*local newspaper	ad hoc/dining: >80 manager: 15 building board: 7 board: 2 architect: 10 contractor: 11 authorities: 4	-Space and Flows 2015 (c) -Space and Flows 2015 (j) -AlterRuralty3 2016 (c) -ADR-19 2019 (c) -AlterRuralities 5 (c)
F	2015-2016	- <b>Doctoral research</b> -Prototype 1:1 -Theater installation in cooperation with Teater Nordkraft -Local interaction	F	-5*local newspaper -1*Arkitekten periodical	ad hoc: >50 guest book: >150 recorded: 25 head of culture: 8 local politician: 4 authorities: 26	-AlterRuralty3 2016 (c) -TM: Yearbook 2016 -iJADE 2019 (j) -ADR-19 2019 (c) -AlterRuralities 5 (c) -ADR-19 2019 (j) -AlterRuralities 5 (j)
END OF PhD PERIOD						
G	2019-2040?	- <b>Radical preservation</b> -The entirety of a station town -Subtractive architectural practice combined with afforestation		?	?	-The Memory of Place 2021 (c) -AR Journal 2021 (j) -RAPS-1 2021 (c) -RAPS-2 2021 (c) -Intangible Heritages 2022 (c)



## *BEDSTED STATIONS- OG SKOVBY*

### ***Agenda:***

*-introduktion*

*-historik*

*-The controlled ruin*

*start marts 2014*

***-Bedsted Stationsby***

***start december 2019***







## Bedsted Today

The northern and newest part of town is managing quite well in contrast to the old quarters in the southern end.

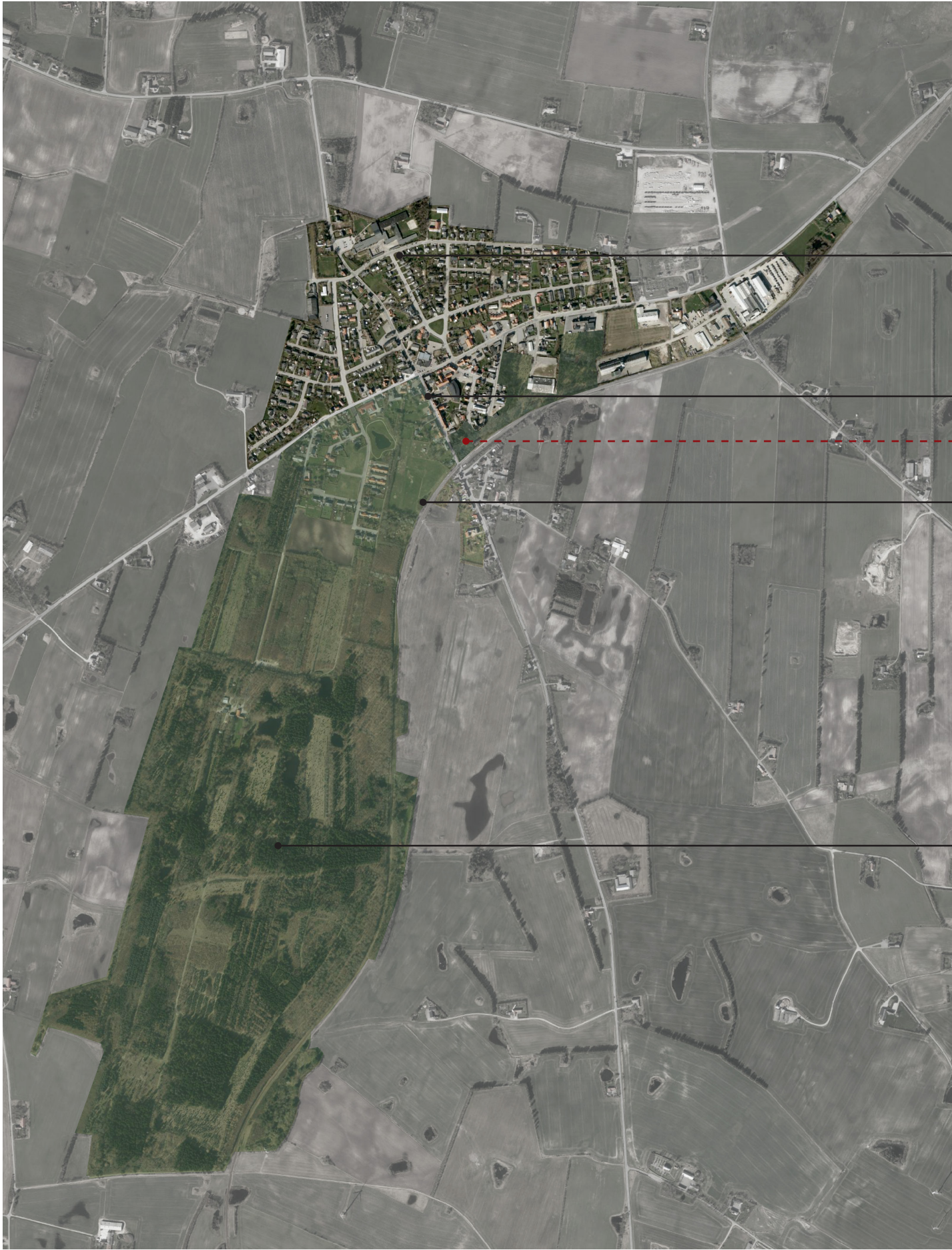
The former town center including the old trading street has hit a downwards spiral and remains partly abandoned in various stages of decay. This includes buildings essential to the community in the past such as the station, the medical care center, and the inn.

The station square

The railway

The existing forest





# Future Bedsted

The northern and newest part of town is managing quite well in contrast to the old quarters in the southern end.

The former town center including the old trading street has hit a downwards spiral and remains partly abandoned in various stages of decay. This includes buildings essential to the community in the past such as the station, the medical care center, and the inn.

The station square

The railway

The existing forest







### Observation 3.1: Thylandsgade 12A



*Fagus sylvatica* hedgerow, fruit trees and *Rhododendron* varieties in the garden



Apple tree orchard with different older varieties



### Observation 4.1: Ringvej 2



Three *Thuja occidentalis* and a single *Ilex aquifolium*



Concrete slab and steps from a former garden shed





The traces of different garden practices found on-site on abandoned plots will be developed into prototypes of how to combine garden practices and afforestation through controlled 'ruination' and succession. In Bedsted the living garden remnants will be extrapolated (Marot, 2003) into the new urban forest as a viridic memory (Raxworthy, 2018) of the palimpsestous character of site and territory.





The small-scale interventions use as point of reference the similar interventions developed in the Alnarp Landscape Laboratory, Sweden, which exemplify how garden practices can be integrated in young forest structures. (Pictures: Stefan Darlan Boris, *Woods go Urban*, forthcoming)











## SCENARIO FOR DELOMRÅDE 1: STATIONSPLADSEN

*Omdannelse af lægehus til udsigtsterrasse og portal; fra Stationspladsen til Rønhede Plantage via den nye skov*

