

STUDIO 1F

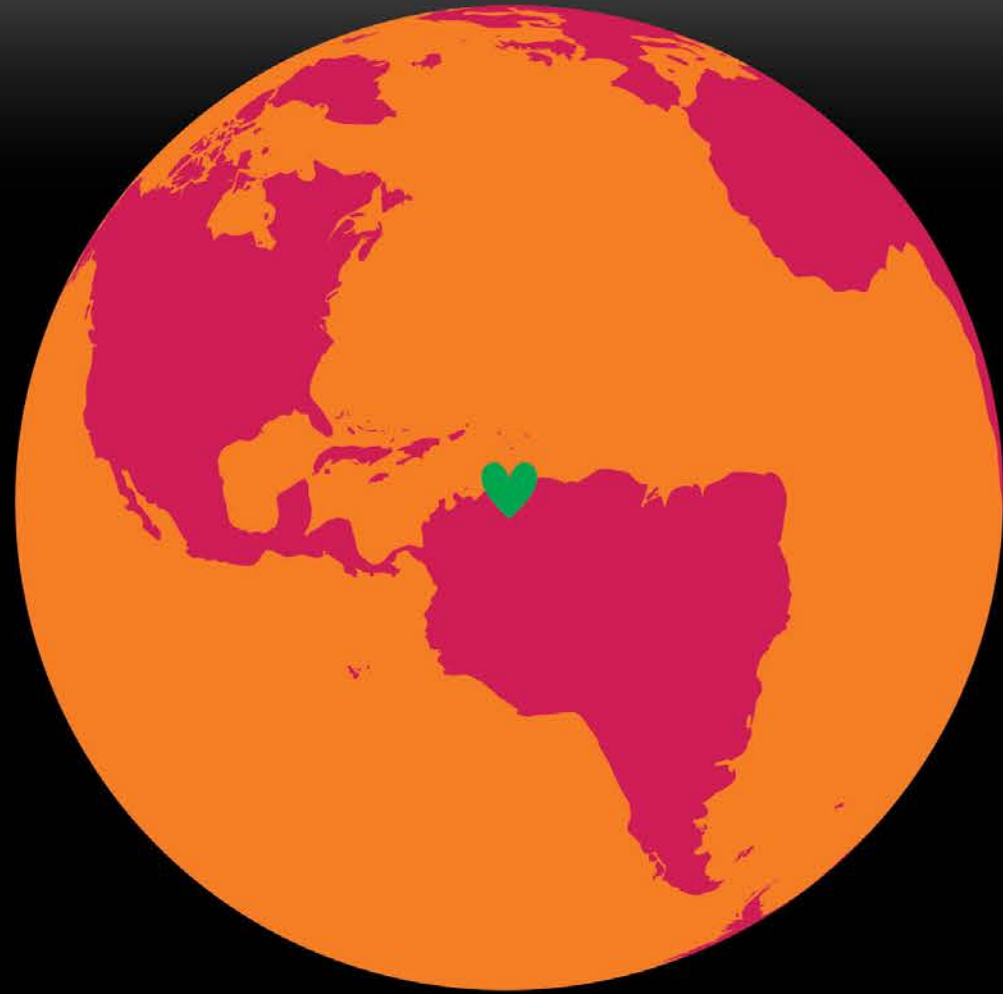
Urban Landscapes
Launching summer 2023



DOUBLE ISSUE

NOV. 7 / NOV. 14, 2022

TIME



THE PLANET WE MADE

STARE AT THE GREEN HEART FOR 12 SECONDS,
THEN TURN THE PAGE AND KEEP STARING

time.com

DOUBLE ISSUE

NOV. 7 / NOV. 14, 2022

TIME



THE PLANET WE NEED

YOU HAVE JUST CREATED A SOCIAL SCULPTURE.
TO PROTECT THE EARTH, WE MUST SEE IT ANEW

ARTWORK BY OLAFUR ELIASSON

time.com

DNA

Exploring visions for the planet we need



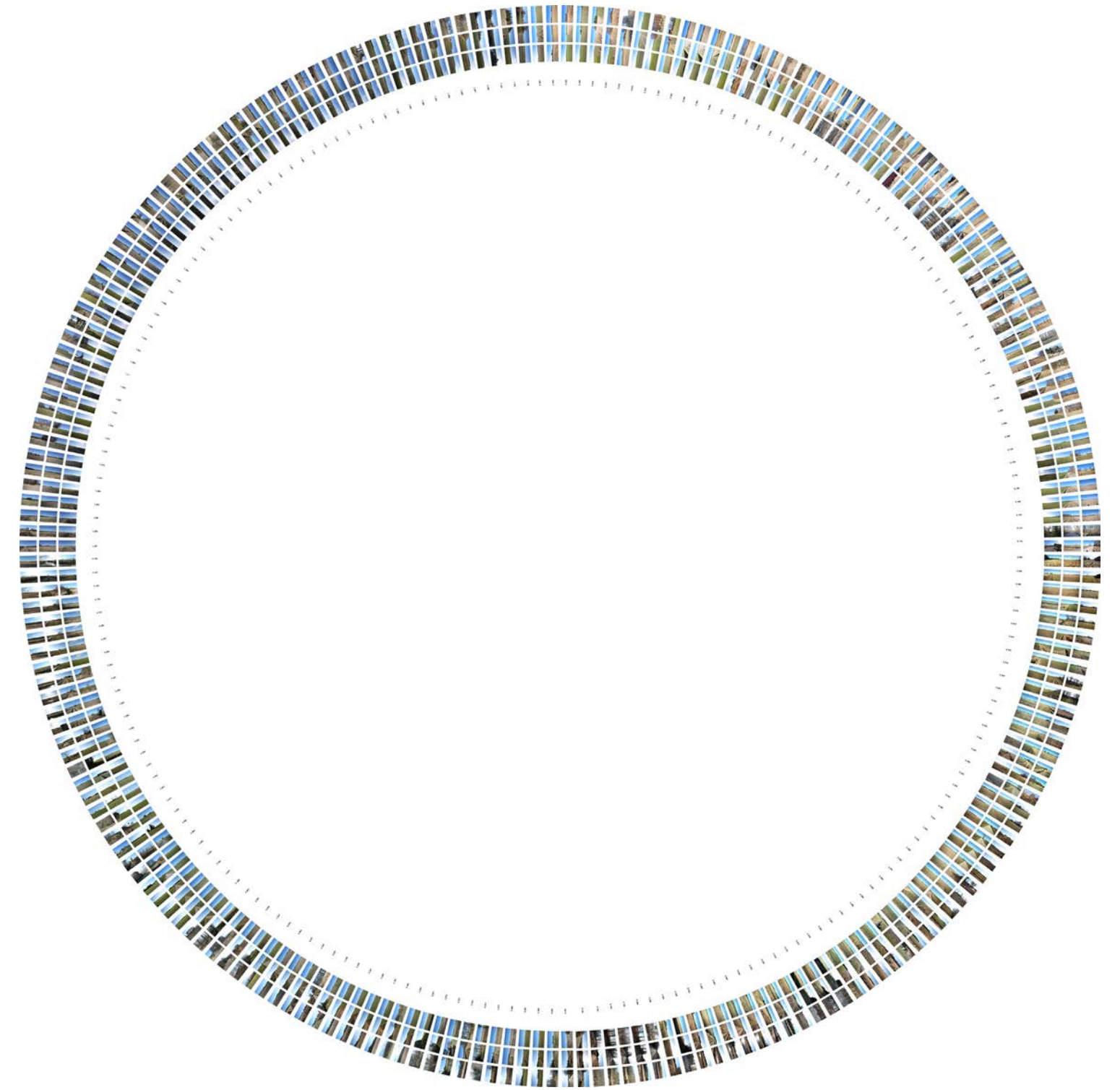
Exploring by combining scientific knowledge with artistic experimentation

Superpositions, Aire River Re-Naturalisation



A key reference project: Canal-gardens (left) and riverine landscape (right)

Superpositions, Aire River Re-Naturalisation



Engage national initiatives - from a scientific and artistic position

LABORATORY

Design through real-world experimentation



Aarhus Landscape Laboratory

3 COUNTRYSIDE

2 SUBURBIA

1 INNER CITY



Rune Bosse, Træfald, 2022



Spatial experiments in 1:1 in Åbo Forest

3 COUNTRYSIDE



Surface- and biodiversity experiments in 1:1 at AAA

1 INNER CITY



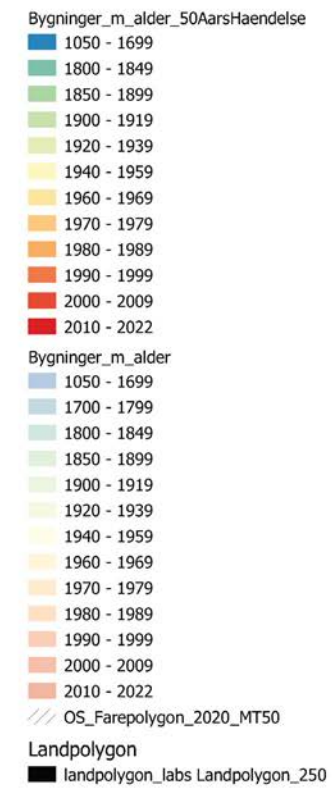
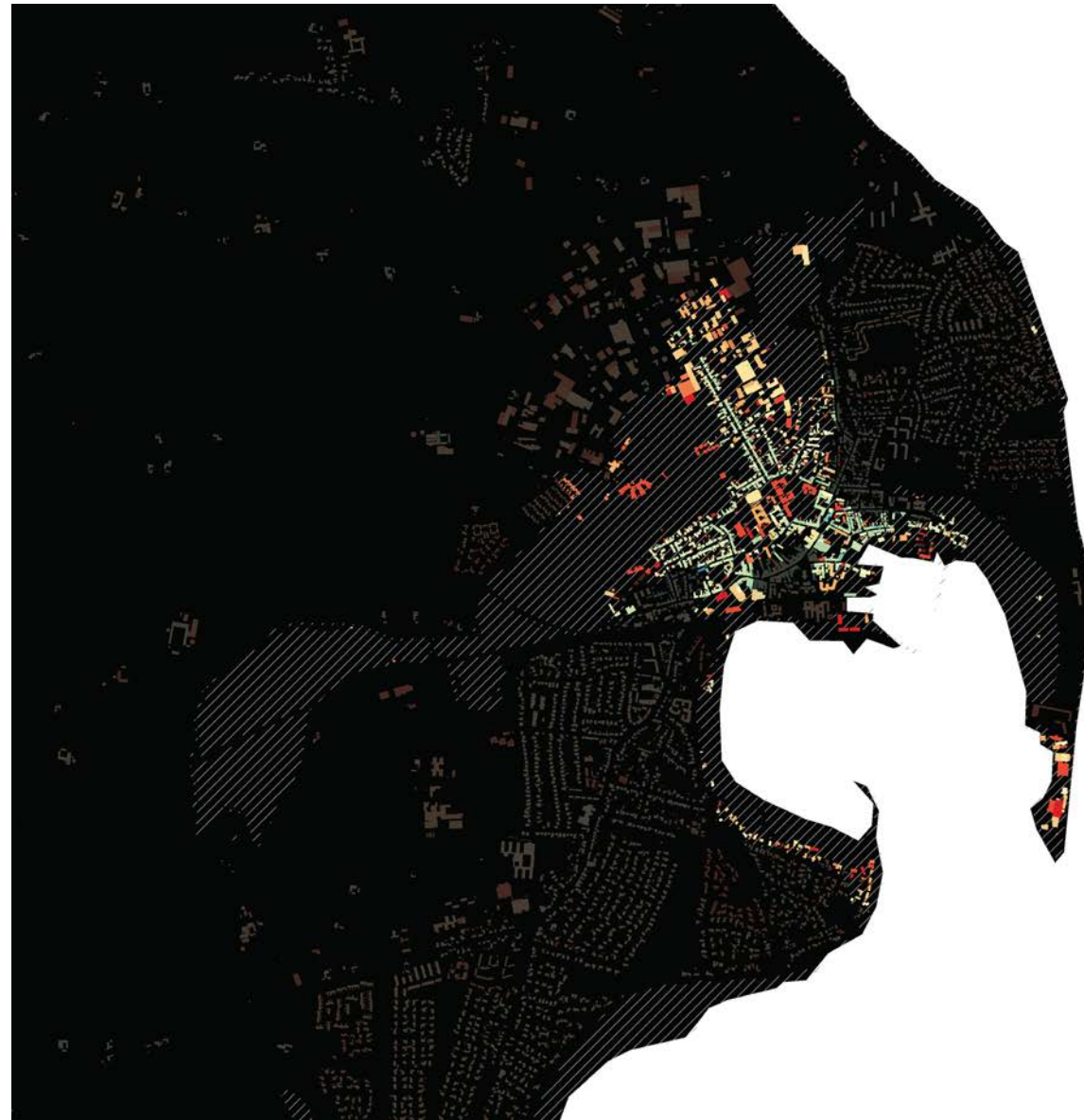
Biodiversity experiments in 1:1 on Eskelunden

TOOLS

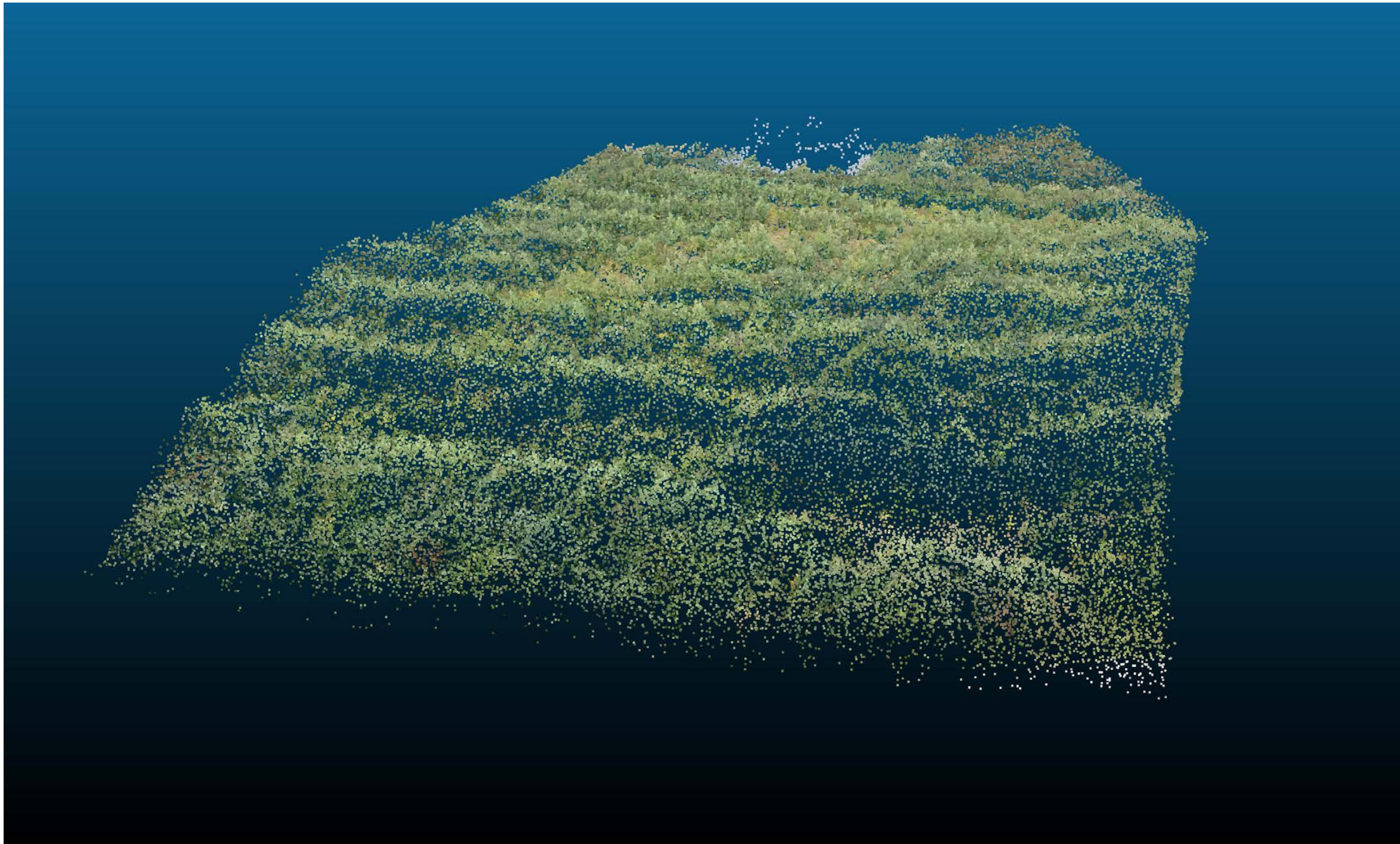
Digital and analogue



Using analogue tools for sensoric and material exploration and representation – here the riverine landscape of the Aarhus River...



...digital tools for mapping and large-scale investigations – here a map of building age and 50 year flooding event (left) and biodiversity potentials (right)



...and 3d-scanning / point clouds / models – here of Åbo Forest 2022

DESIGN TEACHING

Based on State-of-the-art research

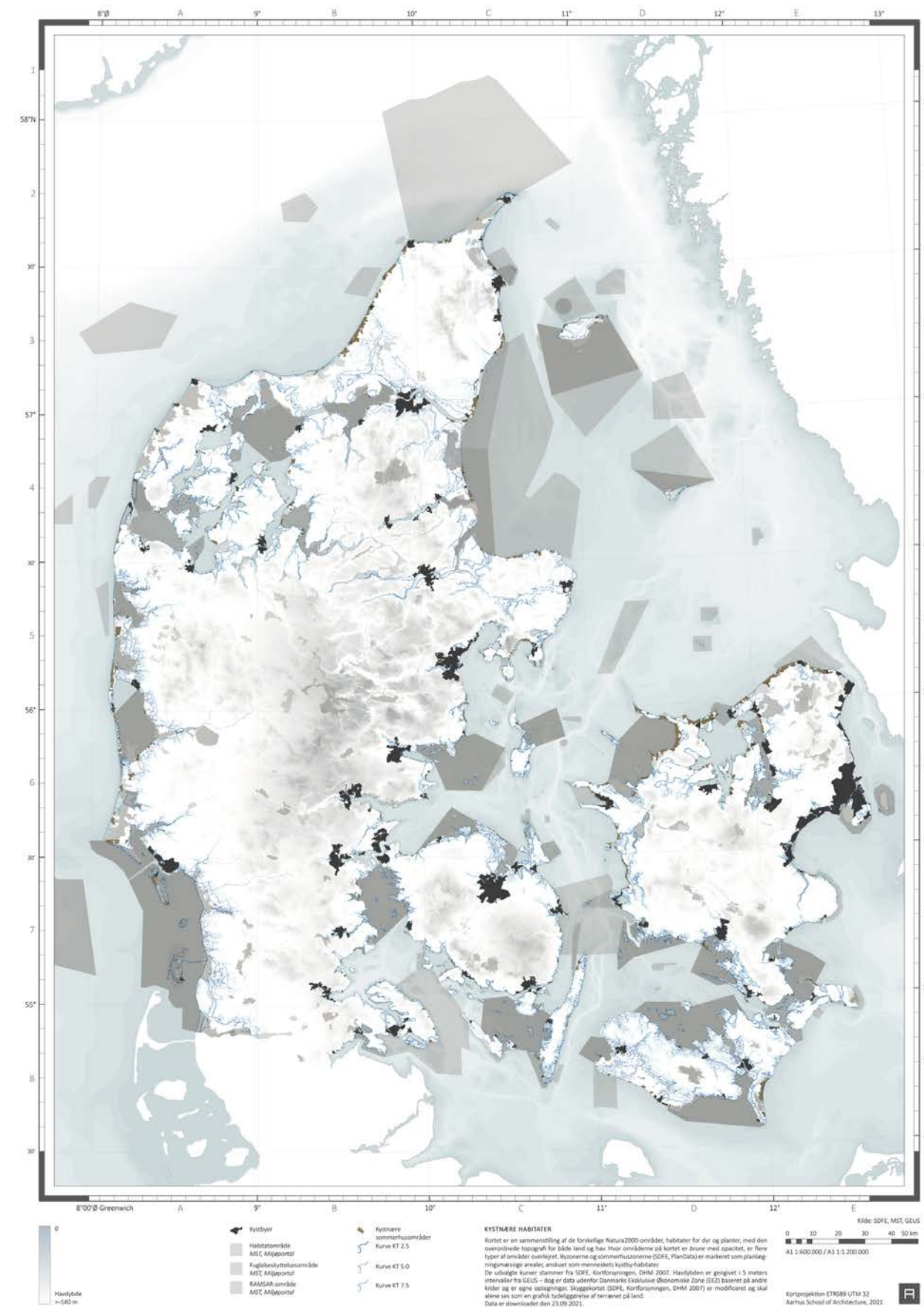
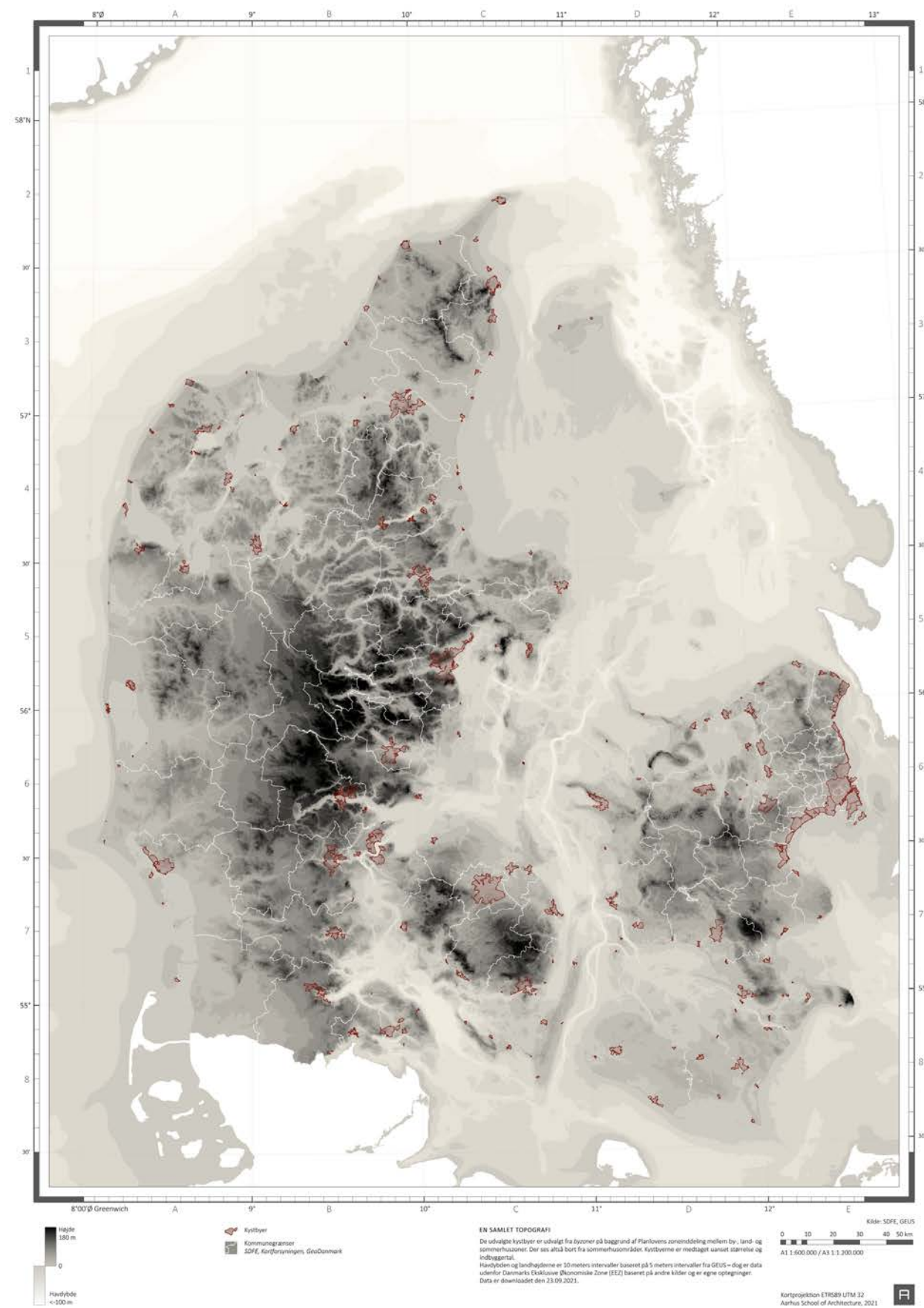


DET LILLE BLÅ

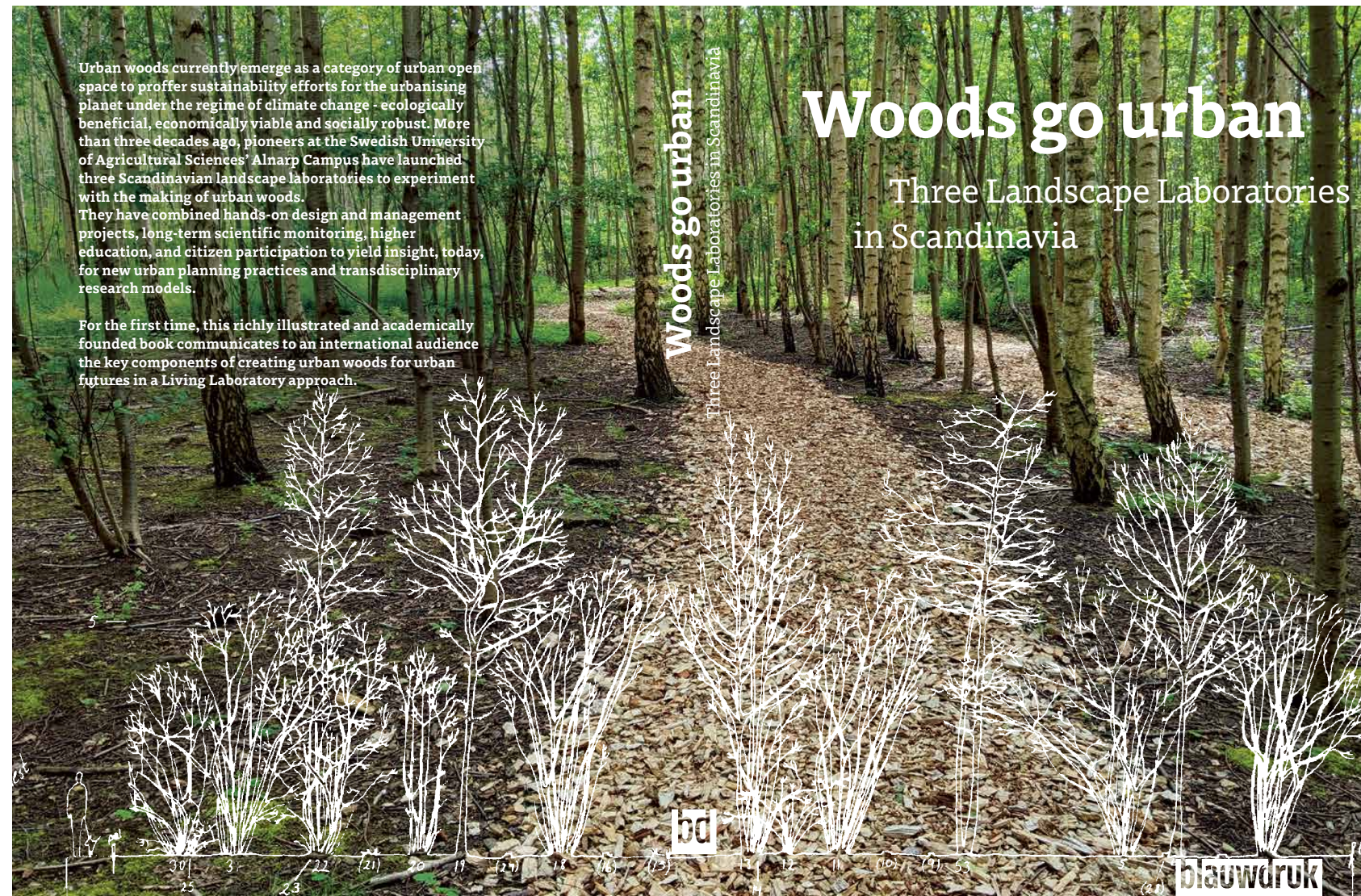
ATLAS

UNDERSØGELSER PÅ DANMARKSKORT AF
RELATIONER MELLEM HAV, KYSTBY OG LAND

2 0 2 2



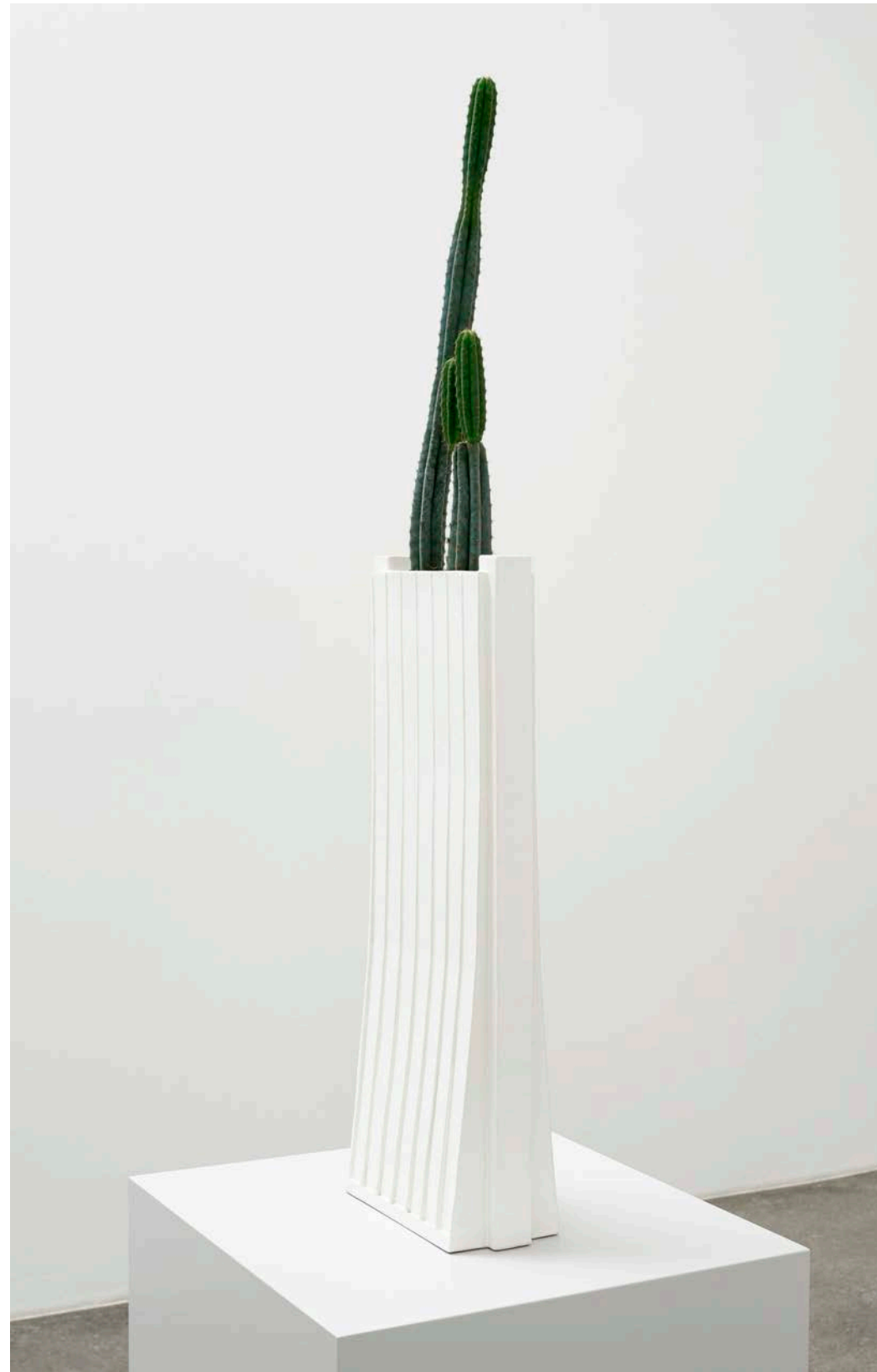
Using design tools to propose new images of the Danish coastal cities as sea levels rise – here from Det Lille Blå Atlas...



...and new verdant, urban spaces as a key element in livable cities – here from a forthcoming work on urban woods Woods go Urban (2022)

THE ARTS

Studio 1F Guest Artist Program



Superflex, Investment Bank Flowerpots, 2021



Rune Bosse, Where you are, 2010



Nanna Debois Buhl, *Cloud Behavior* (film + photography), 2018



Eva Koch, I am the River (film), 2012

COLLABORATION

Outreach and cross-disciplinary



(1) UiT Norges Arktiske Universitet
Tromsø, Norway

(2) Aarhus School of Architecture
Aarhus, Denmark

(3) Studio Urbane Landschaften, Hafencity Universität
Hamburg, Germany

(4) Studio Urbane Landschaften, Leibniz University Hannover
Hannover, Germany

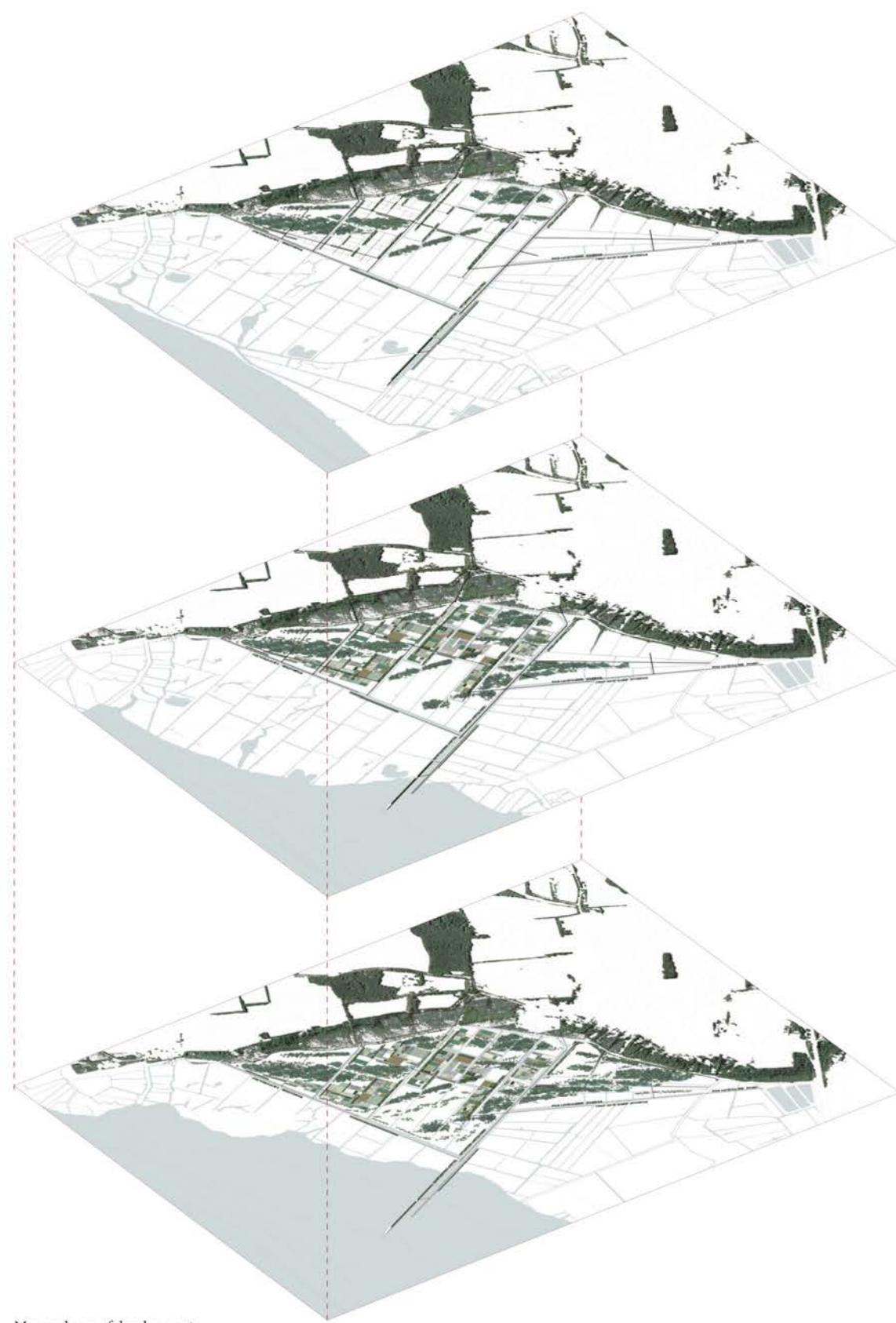
(5) ENSAG École nationale supérieure d'architecture de Grenoble
Grenoble, France

THE PROJECTS

FRANCESCO CAUDA

2020

**World Landscape Architecture Graduate Award
Nationalbankens Jubilæumspris**



Macro phases of development

Phase 1 (2020-2030)

- A. Transformation of the existing levées;
- B. ROBUST INFRASTRUCTURE: ensure the spatial organization of the area: first rows of trees and forest patches are planted in respect of the existing land structure;
- C. The main circulation network is realized, predisposing the west part of the laboratory for further development.

Phase 2 (2030-2060)

- A. LIGHT INFRASTRUCTURE: colonization of the predisposed landscape with agricultural fields and orchards;
- B. Implementation of the circulation network;
- C. Level of the sea +0.5/1 m.

Phase 3 (2060-2100)

- A. Full landscape development of the laboratory with mature woodlands and humid zones intermingled with agricultural activities;
- B. Implementation of the circulation network;
- C. Level of the sea +1/1.5 m.

2.5 km

2

1.5

1

0.5

0



Scenario 2100: advanced stage of landscape laboratory, sea level rise +1 m and high-tides

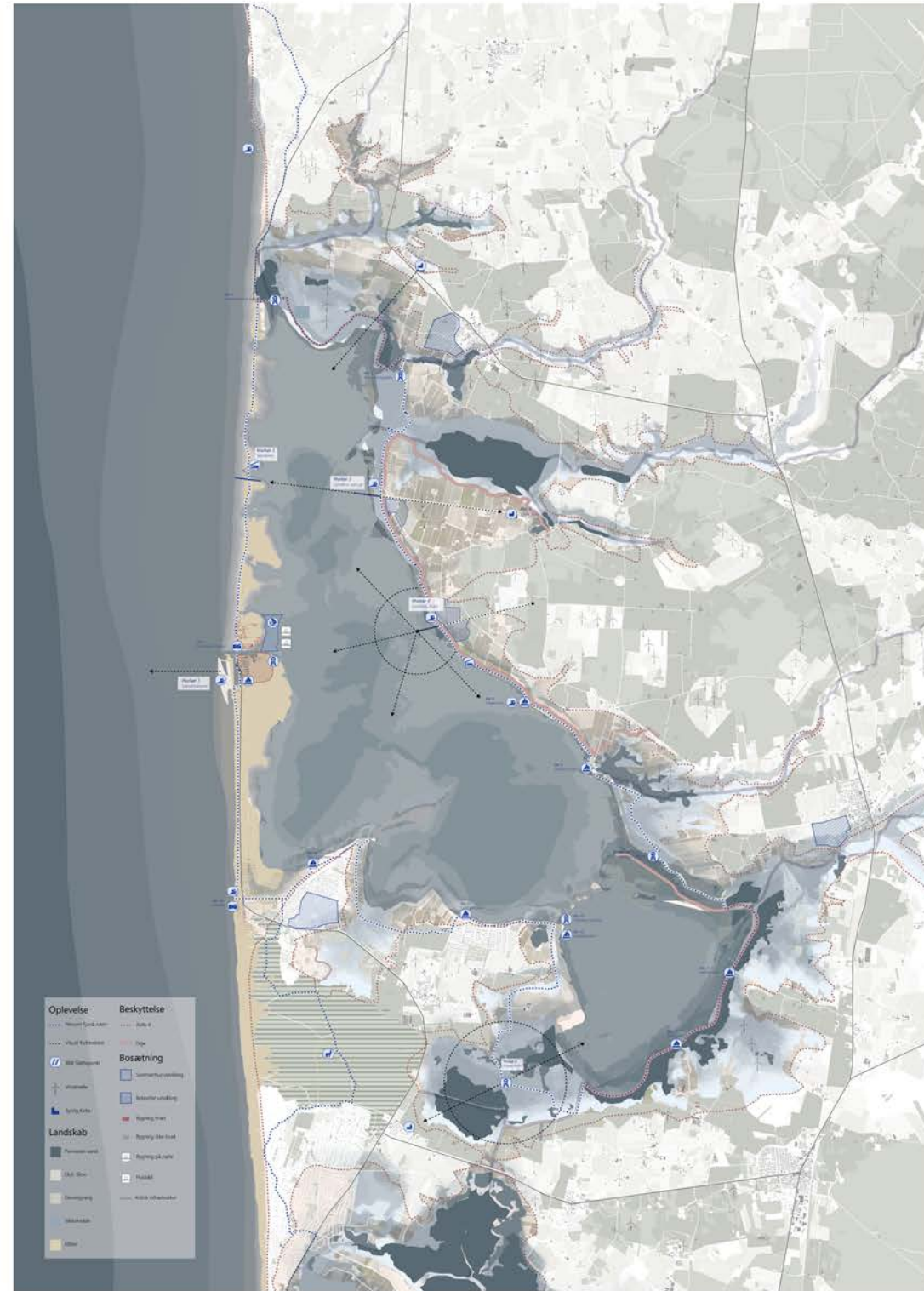




JACOB MATHIESEN JØRGENSEN

2022

Sweco Transform Award

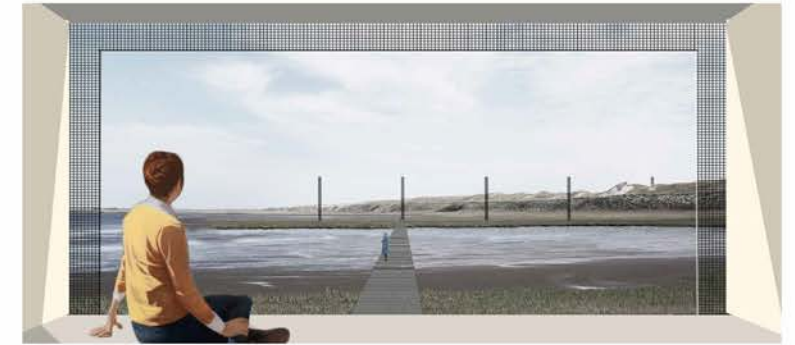


RUMLIG STRATEGISK PLAN
1:50000

På baggrund af udvalget af områder, som jeg vil
den erklære, at hvis man holder sig til en bebyg-
ningsplan, vil man ikke udgive potentielle i
området godt nok, da der er forskel og ulighed med
hvis Derfor har jeg sagt, at bør der ikke forskellige
strategier og længe dem de stadig, hvor der går
bedt mening. Da Nærum fjord kan betragtes som
et stort rum, så den plan skal betragtes som
en rigtig plan. Her har jeg bemærket mig af elementer
som skoven og fjorden, til at betragte rummet, og
denne afgangsplan, men også forskellige betændelse
på nærs.



Vorderne



Vorderne overnatningsstue



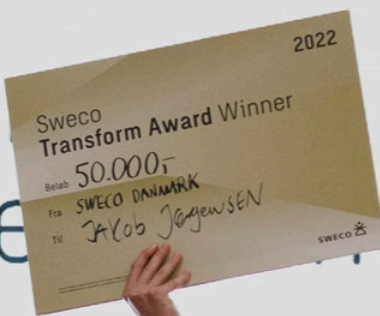
Fjordens Udsigt mod vorderne



Fjordens Udsigt mod Ness Kirke

Vinder af Sweco Transform Award

Jacob Jørgensen Arkitektskolen plus



Jacob Jørgensen i midten og de andre finalister med dommerkomiteen foran. Foto:Sweco

2023 - 2024

CAFX + Øst for Paradis

Josephine Michau, Curator, 18th International Architecture Biennale, Venice

CAF × 2023

SUSTAINABLE FUTURES - LEAVE NO ONE BEHIND

2023 will be a very special year for architecture. We will use this momentum to rethink the ethics of architecture in the midst of global crises, political, ecological and social. This requires new interdisciplinary collaborations and joint action from citizens to experts.



DITTE DAUBJERG
ØST FOR PARADIS

A black and white portrait of Josephine Michau, a woman with light-colored hair pulled back, wearing a light-colored blouse with a white scarf tied around her neck and a dark jacket. She is smiling slightly and looking towards the camera. The background is blurred, showing other people in a crowd.

**“THE CLIMATE AND BIODIVERSITY CRISIS “IS THE GREAT
COMMON CHALLENGE OF OUR TIME – INCLUDING FOR
ARCHITECTURE. THIS CRISIS DEMANDS GREATER CARE
FOR OUR LANDSCAPES AND A DIFFERENT, MORE NUANCED
UNDERSTANDING OF THE CONTEXT IN WHICH WE OPERATE.”**

JOSEPHINE MICHAU
CURATOR

18. INTERNATIONAL ARCHITECTURE BIENNALE, VENICE 2023

FACULTY



Martin Odgaard
Associate Professor
Urban Planner PhD



Katrina Wiberg
Associate Professor
Landscape Architect MDL PhD



Stefan Darlan Boris
Associate Professor
Landscape Architect MDL PhD