

The background of the entire page is a photograph of a massive, light-colored stone wall. The wall is composed of large, roughly rectangular blocks, some of which are weathered and cracked. The texture is very rough and uneven. In the foreground, there are several wooden pallets stacked on the ground, suggesting a quarry or a stone processing site. The lighting is bright, creating strong shadows and highlights on the stone surface.

Ecologies of Stone

Mallorca Seminar

What ecological relations exist between the quarry landscape, stone building culture, and geology?

October 23-25th 2024

Program Schedule

Wednesday *October 23*

PM **Arrival at Agroturismo in Petra** Agroturismo Son Sant Andreu
 and light dinner Ma-3310, Petra (ES)

Thursday *October 24*

8:00 - *Breakfast served at Son Sant Andreu*

8:30 - *Departure from Son Sant Andreu*

9:00 - *Trossos de Marés* Muro
 Tour of marés stone types

10:30 - *Quarry visits in Muro*

13:00 - *Lunch at 13.00 lunch at Can Lliro* Manacor
 Bar and café designed by Aulets Arquitectes, 2019

14:45 - *Tour of Can Feliz* s'Horta
 Private House by Jørn Utzon 1994

16:15 - *Tour of Can Lis* Portopetro
 Private House by Jørn Utzon 1972

17:30 - *Arrival at Son Sant Andreu* Son Sant Andreu

19:30 - *Group Dinner at Son Sant Andreu*

20:00 - *Short presentations during dinner*
 Oliver Wilton + Matthew Howland (report from London)
 Lundhs + RISE + WebbYates (Update Fichley Road)
 Guillem Aloy + Jonathan Foote (Estret des Temps, quarry as 'scar')

Friday *October 25*

- 08:00 - *Breakfast served at Son Sant Andreu* Son Sant Andreu
- 08:30 - *Departure from Son Sant Andreu*
- 09:00 - *Quarry visits* Lluçmajor
- 11:00 - *La Lontja, Palma* Palma
(Guillem Sagrera, 1452), tour F Cifuentes
- 12:00 - *Palma Cathedral + Lunch on your own*
Tour of private House by Jørn Utzon 1994
- 14:00 - *Meet at Parking Passeig Malorca*
- 14:15 - *Son Puigdorffila Vell*
Tour of Manor house with F Cifuentes, Aulets Arquitectes
- 15:00 - *Social Housing, Projects, IBAVI, 2024*
Tours with Carles Oliver
- 17:30 - *Aperitivo and tapas at Son Sant Andreu* Son Sant Andreu
+ Meeting on EoS next steps
- 20:00 *Dinner at Can Salom, Petra* Restaurant Can Salom
Plaça Fray Junipero Serra, 4, Petra,
-

Saturday *October 26*

- 8:00 - *Breakfast served at Son Sant Andreu*
Departure with vans from Son Sant Andreu

Mallorcan geology

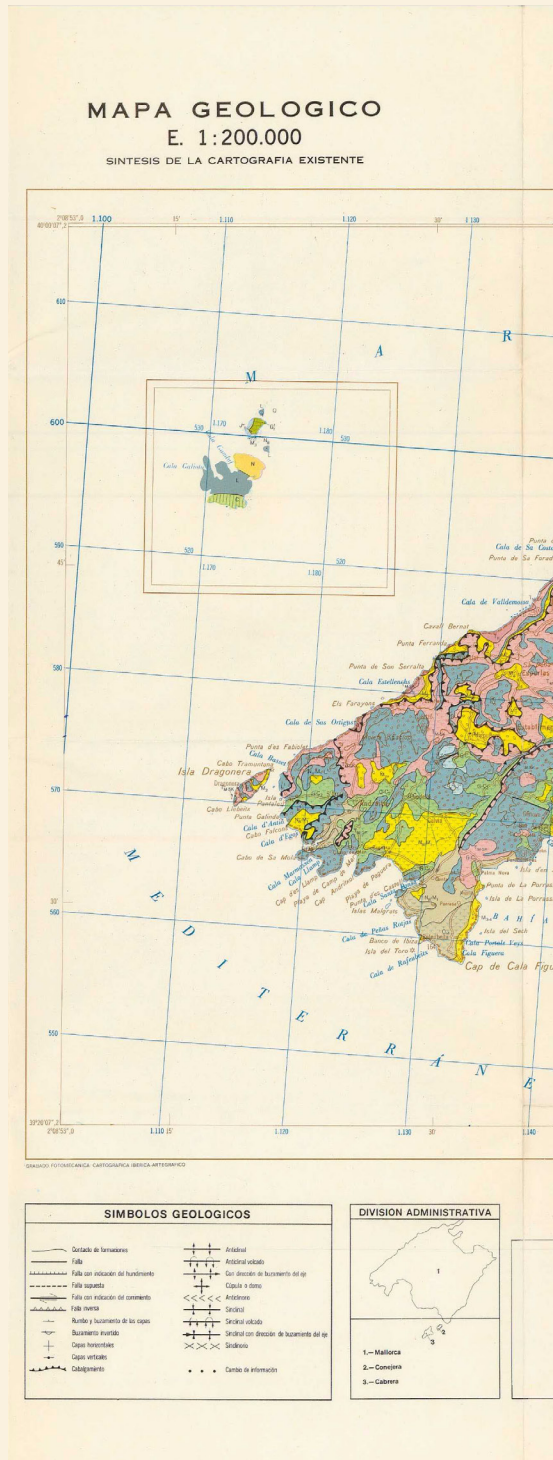
Mallorca offers a rich geological heritage, including Quaternary coastal formations and Triassic mountain ranges. A wide, windswept marine platform, dating mainly from the Late Pleistocene, has provided the island's principle building stone, called marés, a bioclastic calcareous sandstone.

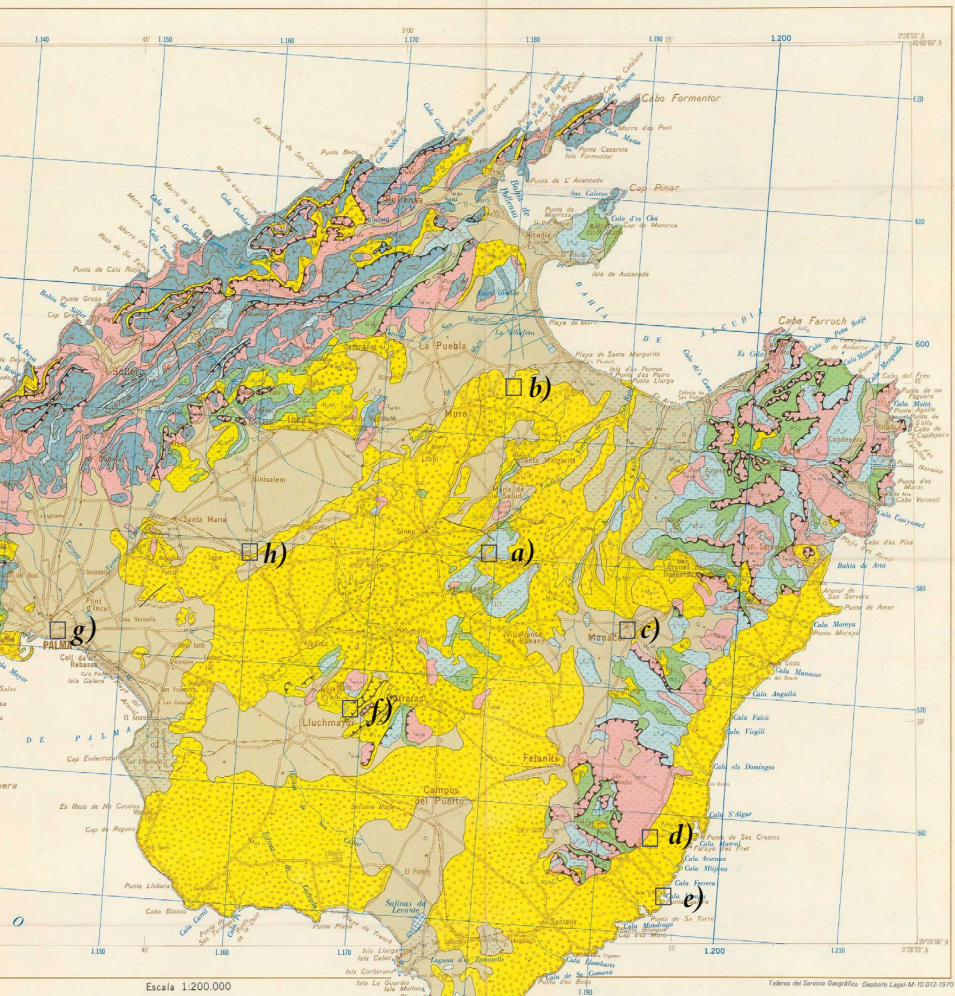
Quarries

Mallorca is an excellent example of a stone ecology. Up to 1500 former marés quarries have been identified, dating back centuries. Many communities were built with stone extracted from the surrounding landscape, and hundreds of small, coastal quarries along the south and west were used to build Palma and its monuments. Many quarries have been filled in, and only about 15 are in operation today.

Seminar Site Visits:

- a) Agroturismo Son Sant Andreu, Petra
- b) Quarries north of Muro
- c) Café at Manacor
- d) Can Feliz, S'Horta
- e) Can Lis, Portopetro
- f) Quarries around Lluçmajor
- g) Mares Buildings around Palma
- h) IBAVI Housing Project, Santa Eugènia





Escala 1:200.000

1.000 m. 0 5 10 15 20 25 Km.

Folleto del Servicio Geográfico. Decretos Legales 10.10.12/10.70

GEOLOGIA SEGUN:

- A = (E) (C) (M)
- B = (E) (P) (F) (O) (S)
- C = (E) (C) (M) (A) (B) (O) (S)
- D = (E) (M) (C) (S) (O) (S)

MAPA FORMADO POR:
INSTITUTO GEOLOGICO Y MINERO DE ESPAÑA (1973)

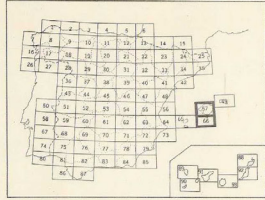


Referencia Mapa Nacional
1: 50.000

642	644	646
697	699	701
57-66		
722	724	726
768		
794		

Referencia Mapa Militar
1: 50.000

38-26	39-26	40-26
38-26	39-26	40-26
37-27	38-27	39-27
37-28	38-28	39-28
39-29	40-29	41-29
39-30	40-30	41-30





Jørn Utzon on construction site of Can Feliz

Utzon Houses - Can Lis (1972) and Can Feliz (1994)

Danish Architect Jørn Utzon built two houses for his family on Mallorca, using the local stone. Utzon's understanding of material qualities came from his personal involvement in construction. From this he had a profound way of creating timeless buildings crafted with regional building practices and materials. Like his housing projects in Denmark crafted with bricks of Danish clay, the two houses on Mallorca are crafted with stone, a distinctly Mallorquin material. Subsequently, Utzon's houses have become an inspiration for a new generation of Mallorquin architects to value the local mares stone and massive building techniques.

Modern Use of Stone

Mallorca is experiencing a renaissance of massive stone architecture. A tight-knit group of architects, builders, and local officials are working to promote marés as a cultural asset and more sustainable alternative to concrete. Many of the new generation in Mallorca credit the Danish architect, Jørn Utzon, for inspiring the use of marés in contemporary architecture.



Demolished Marés stone, reused in IBAVI housing by Harquitectes, Palma



For questions or practicalities please contact:

Jonathan Foote:

+45 312054 97

jofo@aarch.dk

Frederik Arqaluk Rosing:

+45 20517243

far@aarch.dk